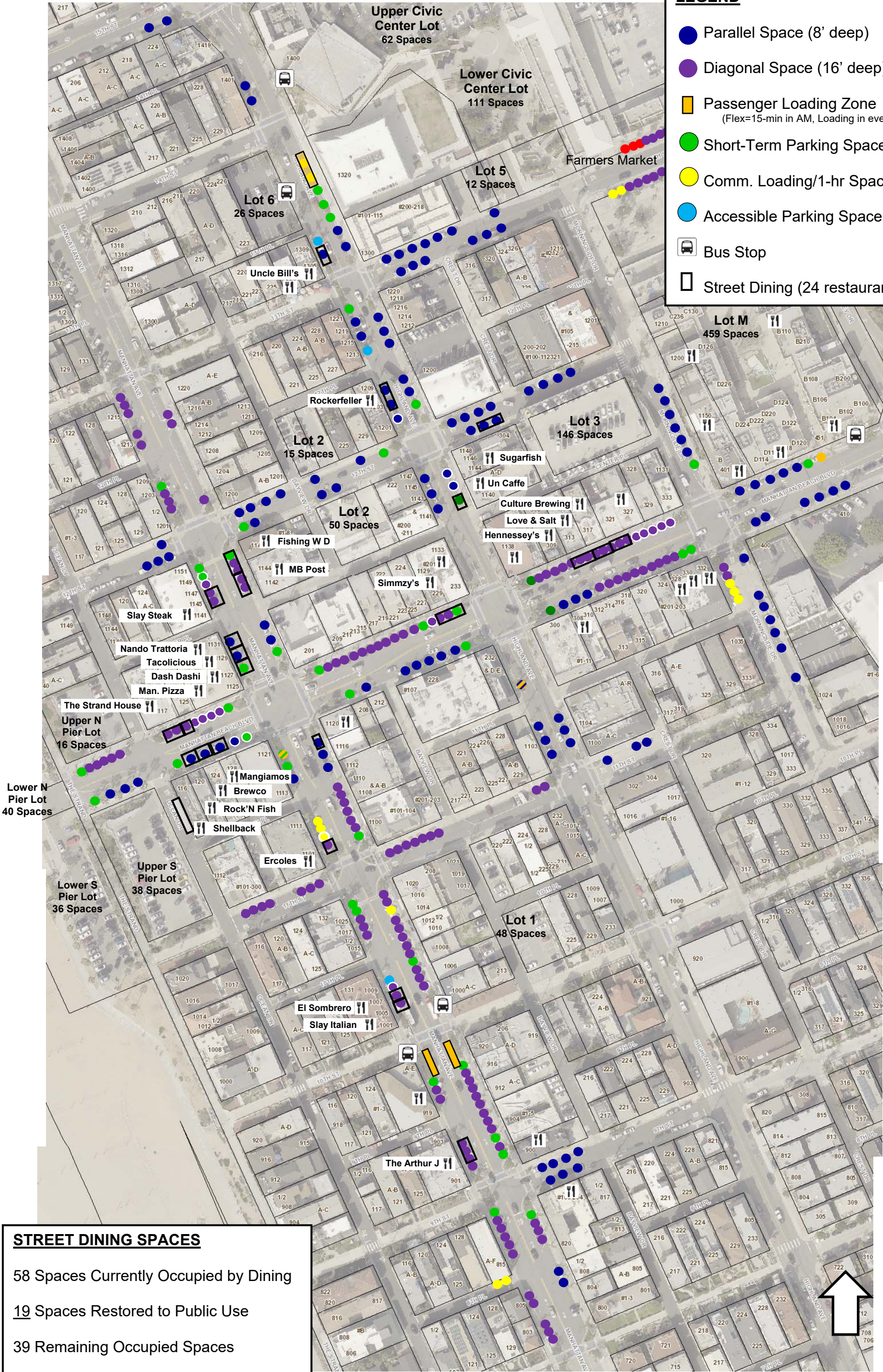


LEGEND

- Parallel Space (8' deep)
- Diagonal Space (16' deep)
- Passenger Loading Zone (Flex=15-min in AM, Loading in evening)
- Short-Term Parking Space
- Comm. Loading/1-hr Space
- Accessible Parking Space
- Bus Stop
- Street Dining (24 restaurants)



STREET DINING SPACES

58 Spaces Currently Occupied by Dining
19 Spaces Restored to Public Use
39 Remaining Occupied Spaces



City of Manhattan Beach
Community Development
Traffic Engineering Division

DOWNTOWN MANHATTAN BEACH
REDUCED STREET DINING PROPOSAL
8/23/2021