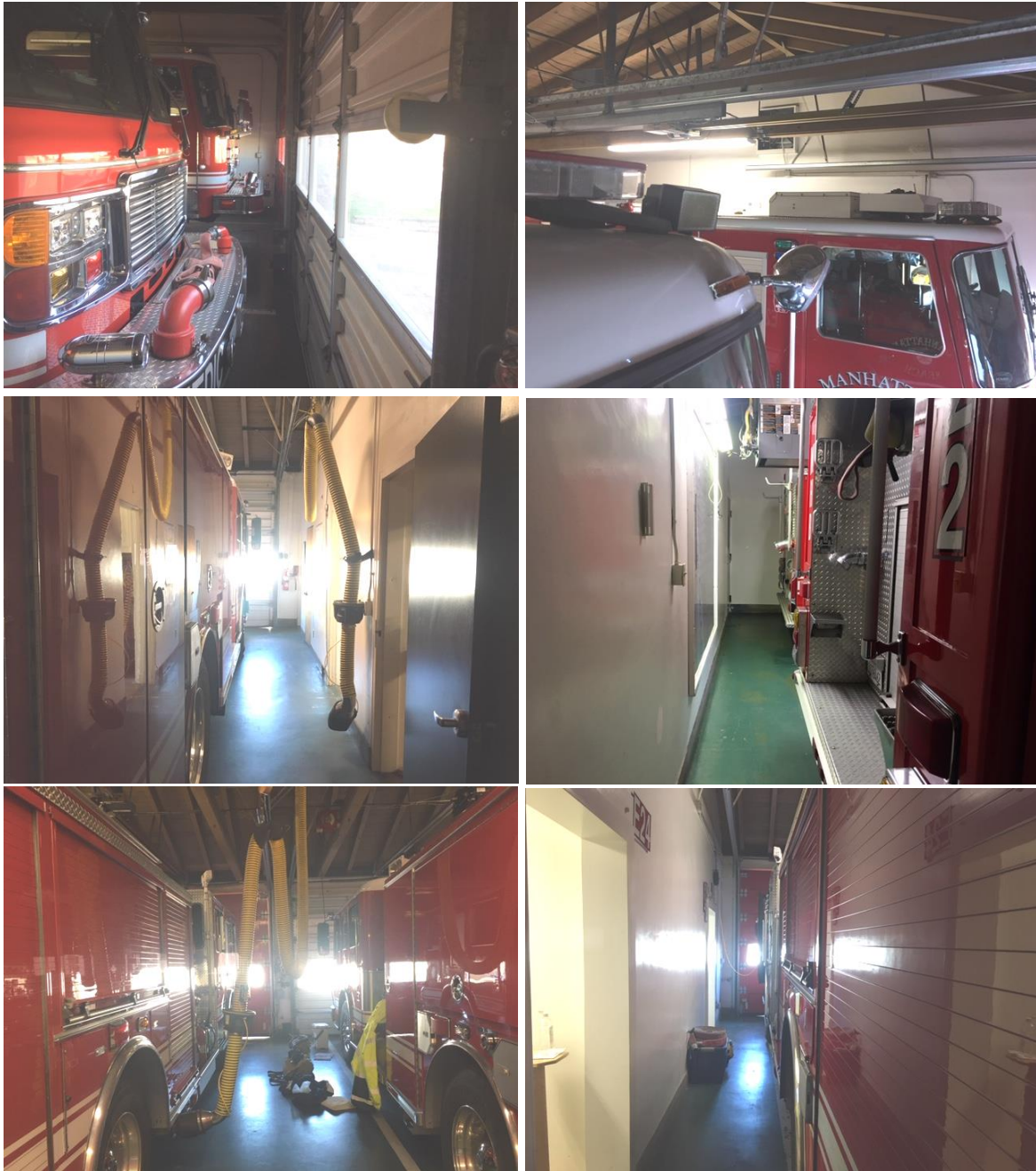


**ATTACHMENT 2**  
**FIRE STATION NO. 2 EXISTING SITE CONDITIONS**



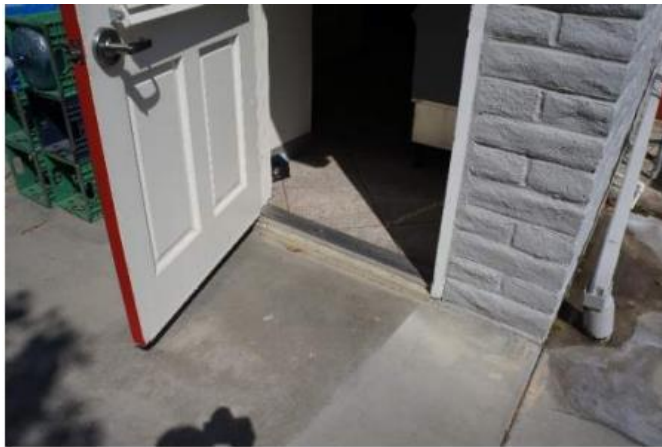
**Photos 1-6.** Space constraints in the apparatus bay.



**Photo 7.** Corridor used for IT equipment, wildland fire strike team equipment, water, station supplies & shop area.



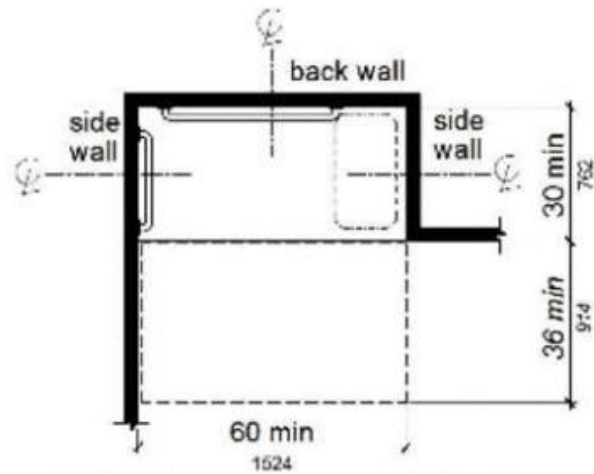
**Photos 8-10.** Non-private changing areas and restroom. No separate facilities for female firefighters.



**11B-303.2 Vertical.** Changes in level of  $\frac{1}{4}$  inch (6.4 mm) high maximum shall be permitted to be vertical *and without edge treatment*.



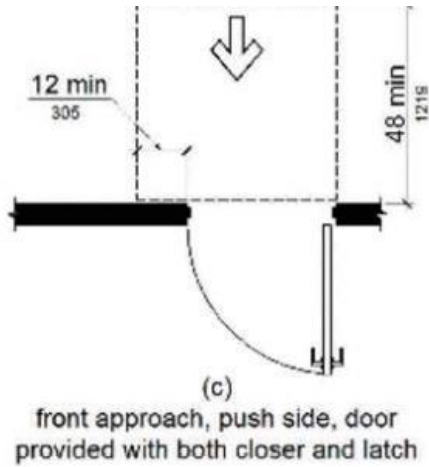
**FIGURE 11B-303.2**  
**VERTICAL CHANGE IN LEVEL**



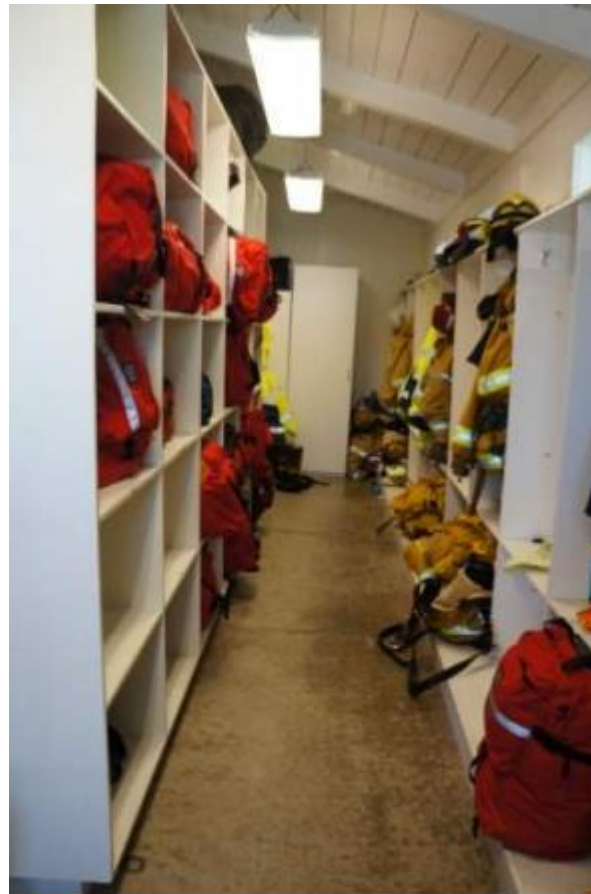
Note: inside finished dimensions measured at the center points of opposing sides

**FIGURE 11B-608.2.2**  
**STANDARD ROLL-IN TYPE**  
**SHOWER COMPARTMENT SIZE AND CLEARANCE**

**Photos 11-12.** Threshold and showers are not ADA-compliant.



**Photo 13.** Example of a door that does not comply with the California Building Code.



**Photo 14.** Turnout room with cracked flooring that is need of replacement.