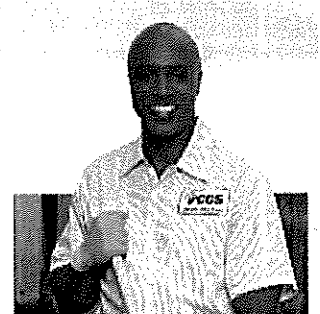
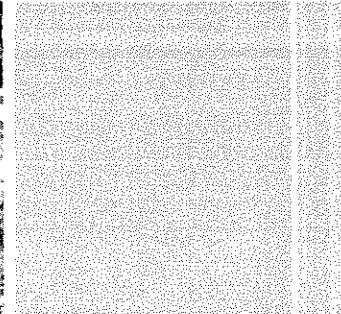
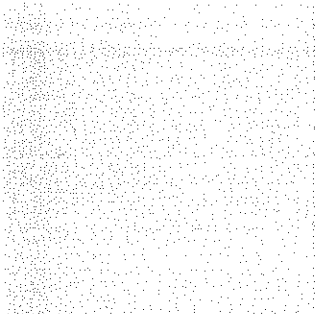


A Company Built To Serve

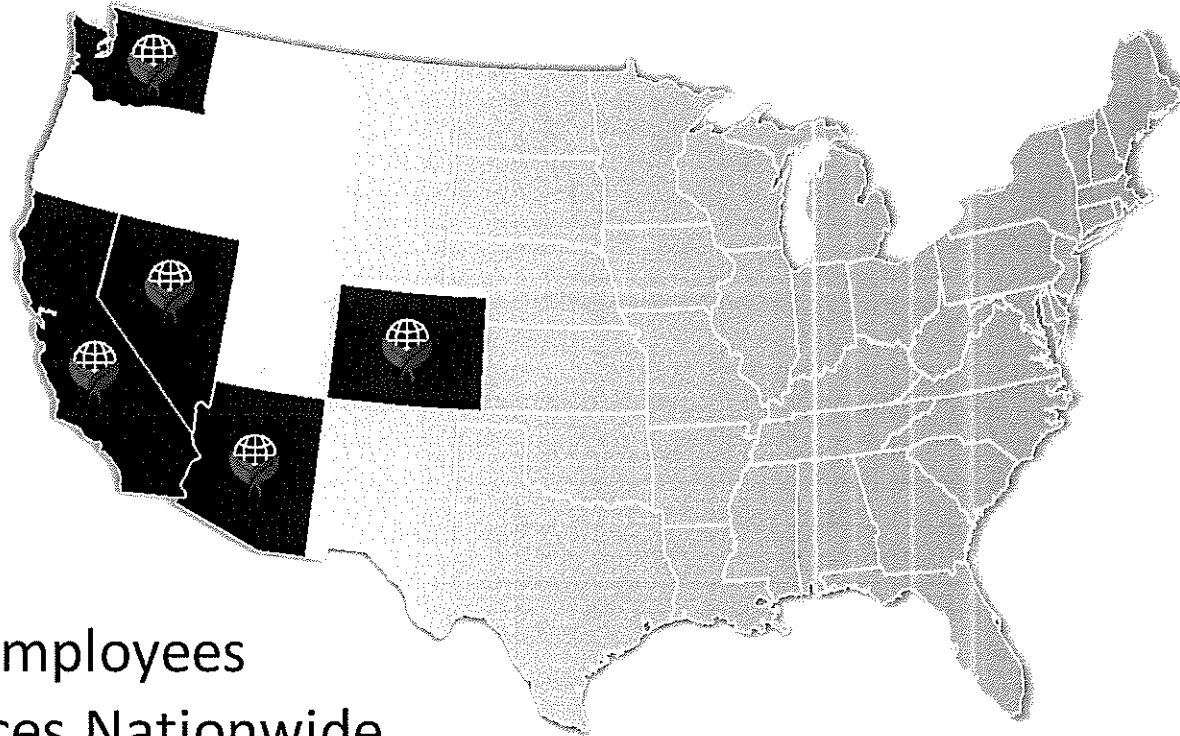


PEOPLE, PROCESSES & INNOVATION
SERVING YOU

June 4th, 2019

OUR PEOPLE

LOCAL & REGIONAL SUPPORT

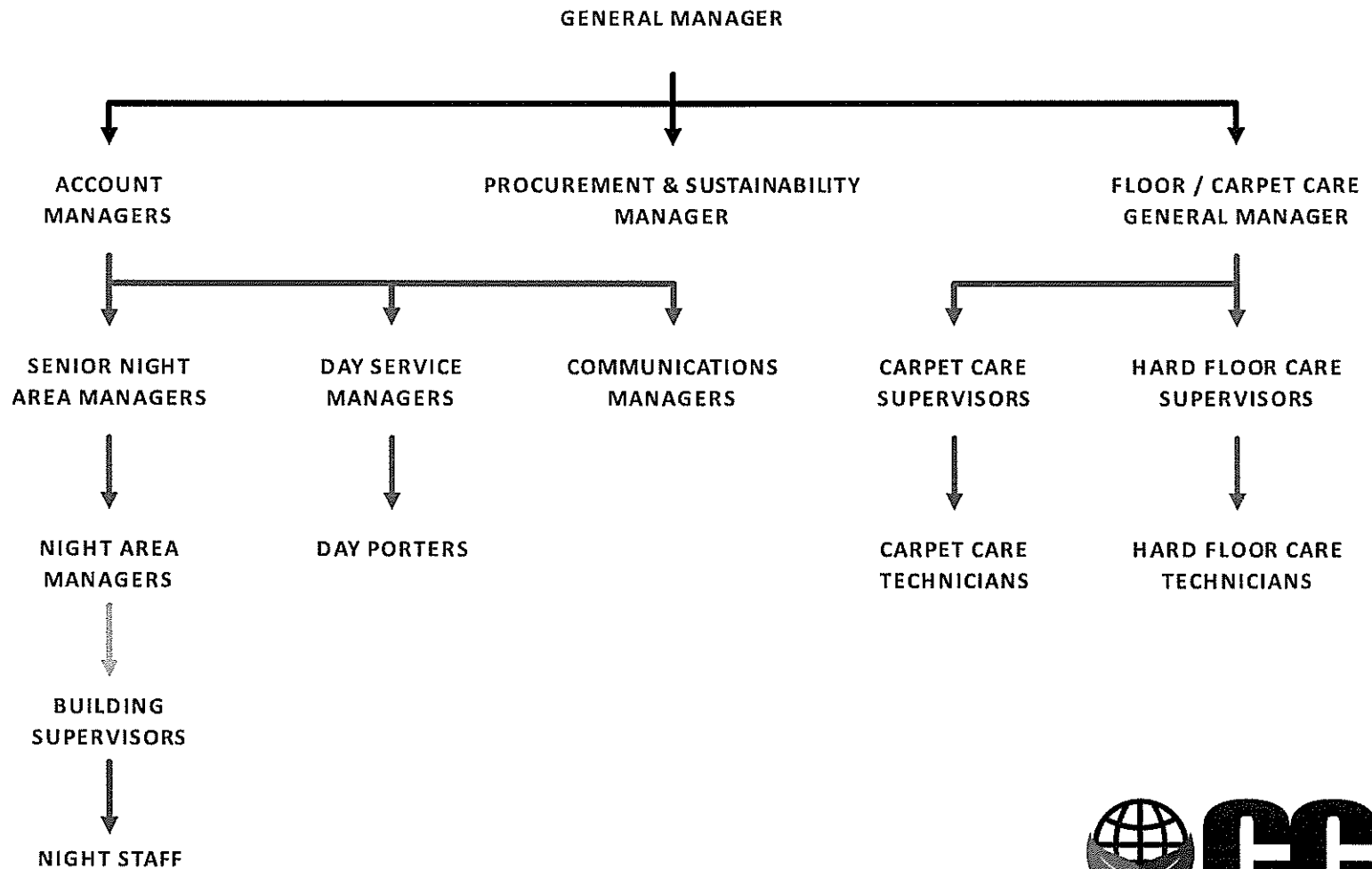


- 4,000 Employees
- 10 Offices Nationwide
- Ownership Presence In All Regions
- Financial Strength
- Resources
- Consistency - CIMS



OUR PEOPLE

MANAGEMENT & SUPERVISION STRUCTURE & APPROACH



OUR PEOPLE

OUR CORE VALUES

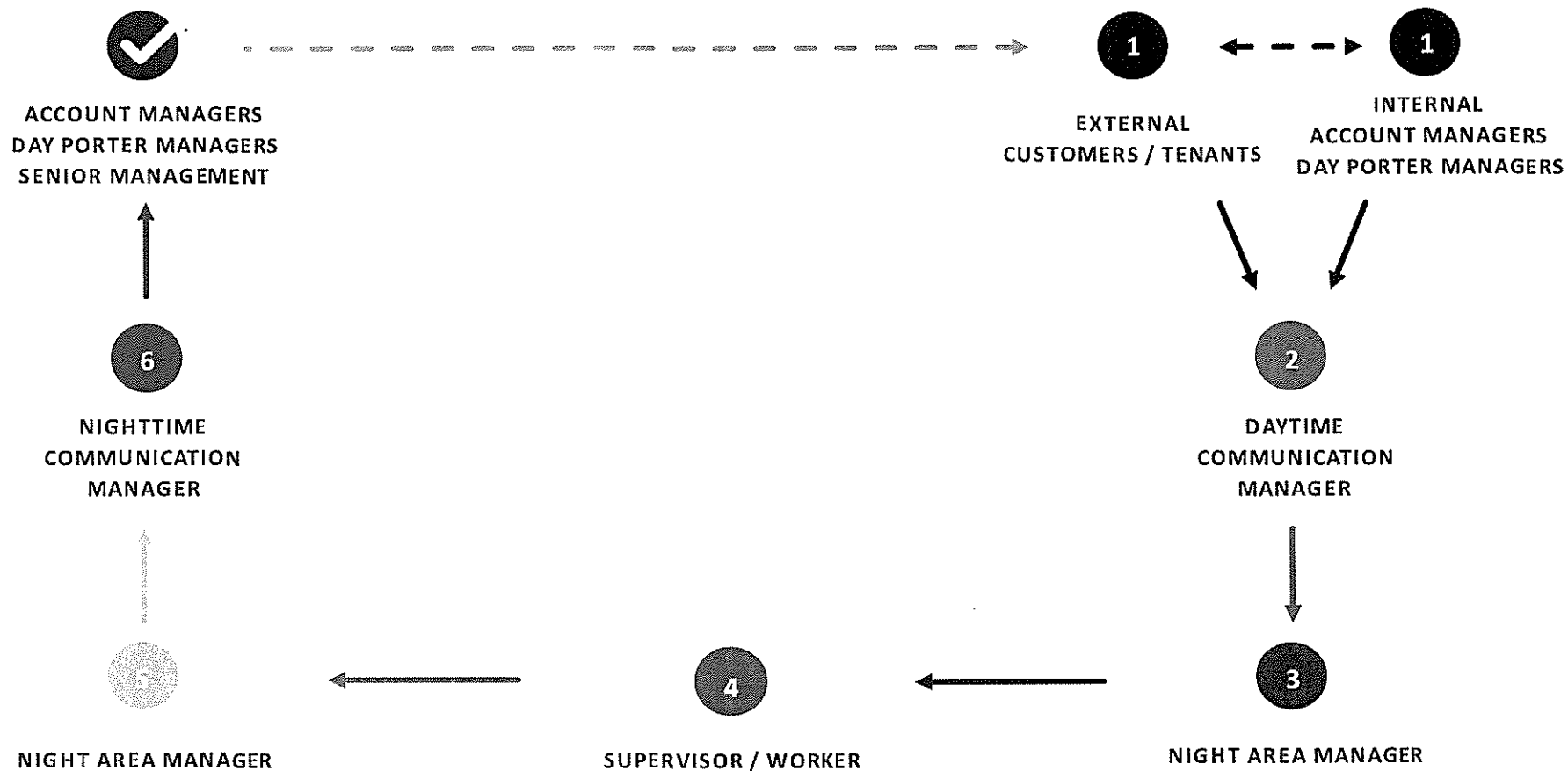
- Commitment
- Professional Integrity
- Accountability
- Continuous Improvement
- Excellence





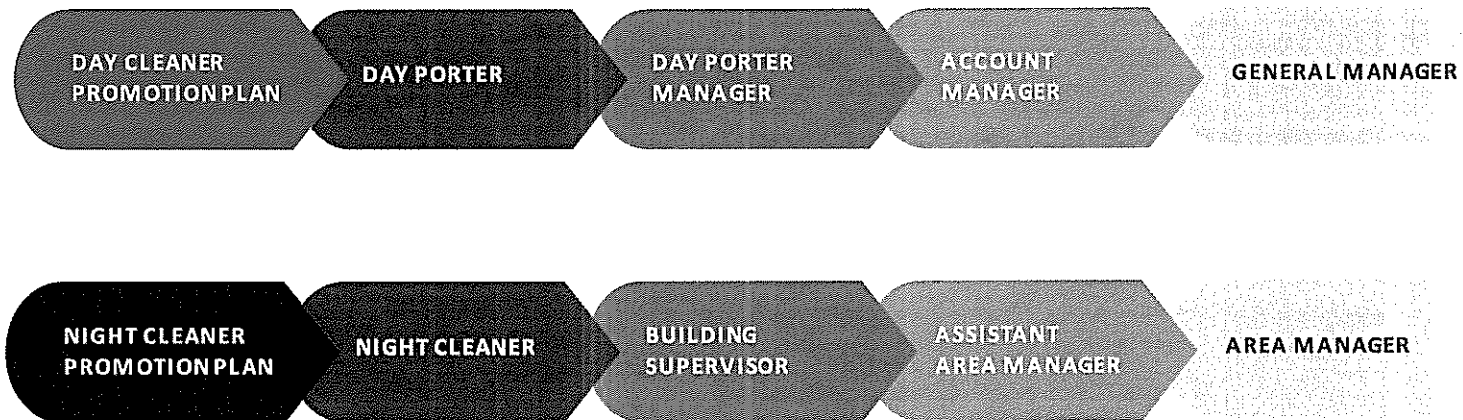
OUR PROCESSES

COMMUNICATION STRUCTURE



OUR PROCESSES

STAFFING PROGRAMS & INCENTIVES





OUR INNOVATIONS

TECHNOLOGY

- iPads/iPhones
- 100% Cloud Computing
- Paperless Pay
- Electronic Timekeeping
- Office 365
- Full Material Requirement Planning (MRP) Software

An Hour Does *Not* Equal An Hour For **CCS**





OUR INNOVATIONS



INVESTMENTS

- Upgraded Equipment
- Advanced Cleaning Products
- Additional Management
- Enhanced Training

Internal investments Equal Improved Productivity



■ OUR INNOVATIONS

THE GOLD STANDARD

- ISSA Cleaning Industry Management Standards (CIMS) Certification
- Daniel Lowery and Don Buffoni
- GB with Honors



OUR PROGRAM

Skechers

SERVICES

MONTHLY COST

Monthly Nighttime Janitorial Services
5 nights per week

\$1,925 per month

CONSUMABLE SUPPLIES

If preferred, Commercial Cleaning Systems can purchase and deliver all building consumable supplies (toilet paper, paper towels, hand soap, trash liners and feminine hygiene products) at our cost without an additional handling charge from our paper supply vendor. These supplies will be billed back to you directly from our paper supply vendor's invoice.



Janitorial Specifications

Services shall include the following utilizing GS-42 certified “Green” chemicals, methods, and procedures and CRI approved carpet and floor equipment to promote safer and healthier work environments:

Entrance and Main Lobby

Daily

- a. Wash both sides of entry doors
- b. Wipe fingerprints and smudges from all metal surfaces
- c. Dust mop floor. Remove gum, spills.
- d. Wet mop floor.
- e. Dust all horizontal surfaces – excluding all aquariums

Weekly

- a. Wash door frames
- b. Spot clean and remove any marks on walls.
- c. Dust and wipe down windowsills.
- d. Spot clean tv monitors on walls as needed.

Quarterly

- a. Machine scrub common area flooring on the first and second floors.
- b. High dust all vents, registers and ceiling fans with a vacuum.

Stairs

Daily

- a. Police stairwells removing all debris, gum and spills. Spot mop and scrub as needed to maintain good appearance.

Weekly

- a. Sweep stairs.
 - b. Wet wipe handrails.
-



Office Areas

Daily

- a. Empty all waste receptacles. Transport trash to collection areas. Note: items not in the receptacle are not to be thrown out unless specifically marked for disposal.
- b. If applicable, empty all full "large" recycle boxes into designated outside bin.
- c. Sweep floors and wet mop.
- d. Dust picture frames and dust all horizontal surfaces below 6 feet high.

Weekly

- a. Remove spillage and smudges from walls, woodwork, light switch plates, baseboards, and interior glass.

Supplies provided by CCS at no additional charge to complete all above work shall include:

- a. Cleaning and chemical supplies
- b. Equipment
- c. Cleaning cloths, squeegees, brushes, and other small hand tools
- d. Carts, mop buckets, and other cleaning utensils

Optional supplies that can be provided by CCS at an additional cost to customer include:

- a. Paper products, including toilet paper, hand towels, seat covers, etc.
- b. Soap
- c. Liners

Optional specialty services can be provided by CCS at the below rates:

- a. Out of Cycle Floor Work – Strip and Wax \$0.45psf
 - b. Out of Cycle Floor Work – Scrub and Recoat \$0.35psf
 - c. Extra Work (detail cleaning, etc.) - \$33.50/hr. (two hours minimum)
 - d. Exterior Window Cleaning- Separate Contract Option to be Quoted as Requested
-