

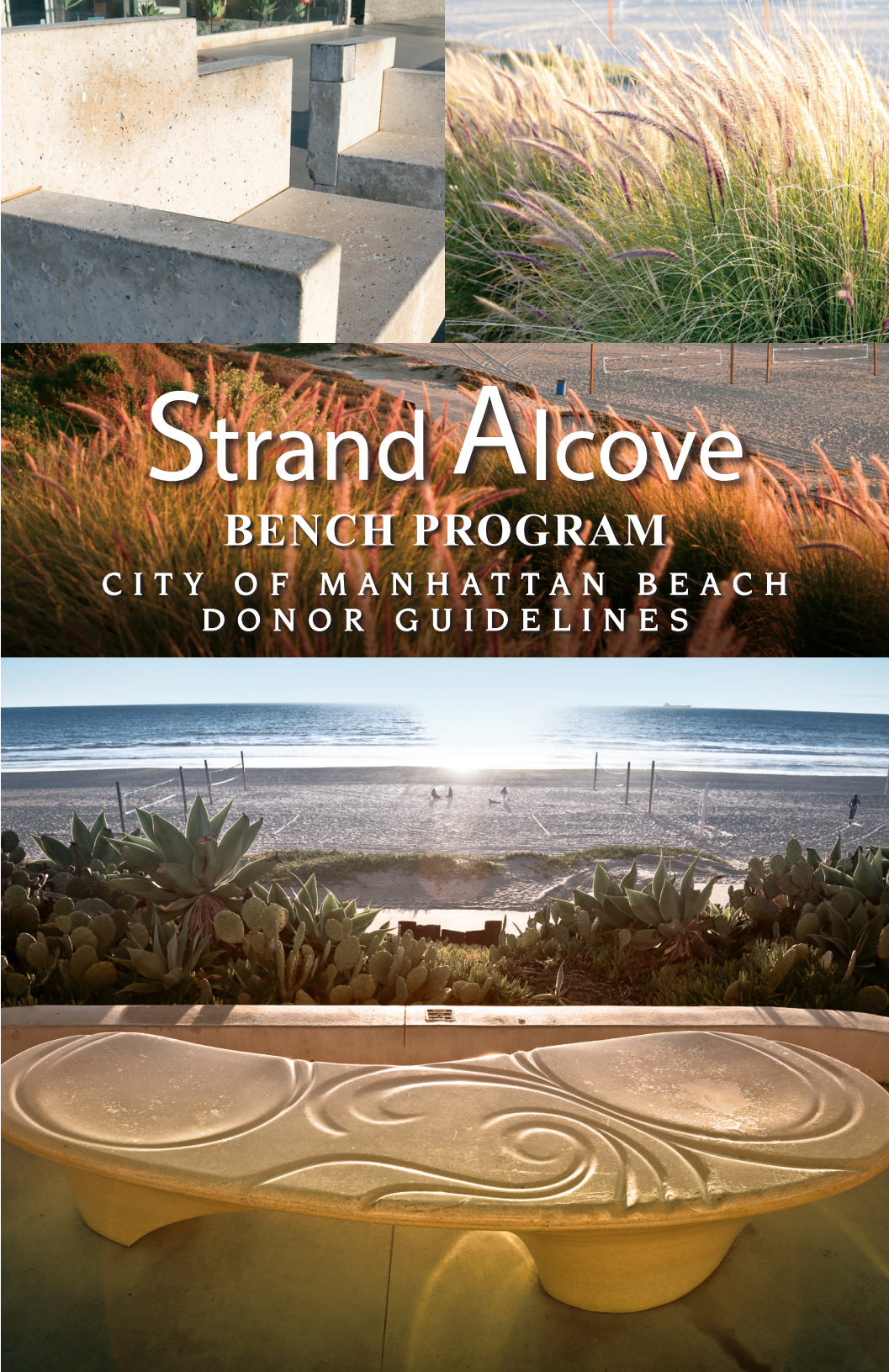


Site Location

The Manhattan Beach Strand is 2½ miles in length from 1st Street to 45th Street. The concrete walk-way runs parallel to the bike path and ocean on the west. On the east are residential homes. Each Bench/Alcove will be treated as a whole unit. The alcove dimensions are approximately 5’ by 15’ in size. The concrete curb surrounding the alcove is 10” high. There is no access to water or electricity. Alcove sites are assigned to donors on a first come, first serve basis. Alcove sites are reserved directly with the City’s Cultural Arts Manager.



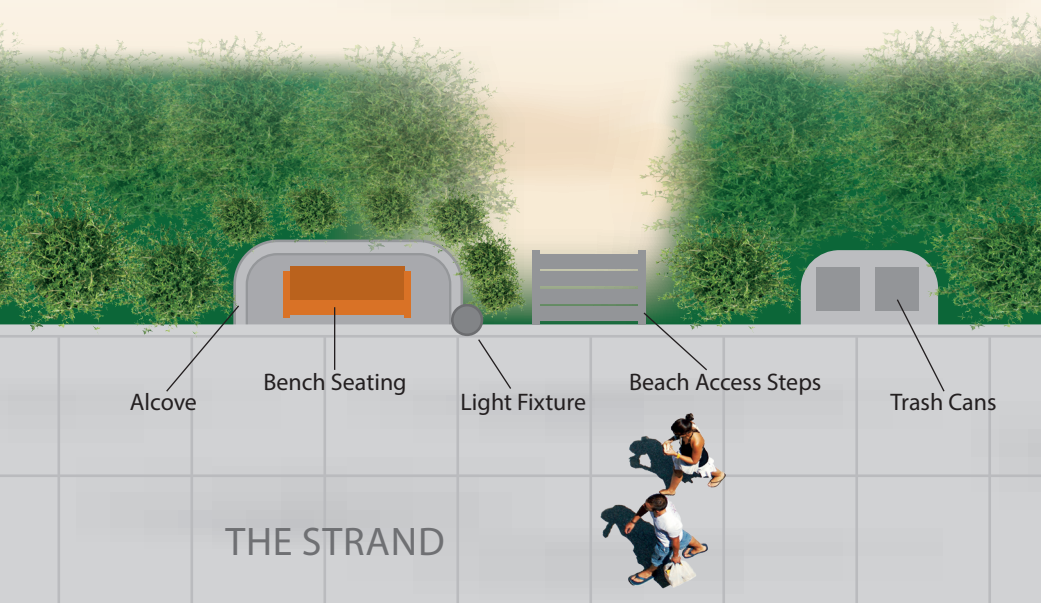
City of Manhattan Beach  
Parks and Recreation Department  
1400 Highland Avenue  
Manhattan Beach, CA 90266





## INTRODUCTION

The Cultural Arts Commission and City of Manhattan Beach invite donors to be part of the Manhattan Beach Strand Enhancement Project. The City intends to increase the public's enjoyment and civic pride through the addition of functional, yet artistic Bench/Alcove areas along the Strand. The following information explains the process for individuals interested in participating. 44 alcoves each containing an area for seating have been created adjacent to the Strand. Rather than continuing to maintain the standard benches, there is a desire to make these Bench/Alcoves an artistically pleasing and restful place to enjoy the beach and surrounding area. For project information, contact the City of Manhattan Beach Parks and Recreation Department Cultural Arts Manager (310) 802-5406.



### Project Goal

The goal of this project is to create an artistic walk along the Strand and provide seating areas which:

- Are of high artistic quality and in keeping with the City's cultural identity of surf, sand and sea;
- Provide a comfortable space to rest and enjoy the ocean and surrounding views;
- Are appropriate to the site;
- Contain seating areas which are durable, safe, vandal resistant, environmentally sound, and require minimum maintenance.

## THE PROCESS

### The Options For Donating A Bench Along The Strand Are:

- A. Select from Pre-approved Designs: Potential donors can review pre-approved Bench/Alcove designs from pre-qualified artists.
- B. Donor's Design Option: The donor is permitted to submit an artist's rendering and model to the Cultural Arts Commission for review. If approved, the artist's proposal would be sent to City Council for approval.

Design submissions to the Commission are reviewed twice annually; in February and July. Benches formerly donated at the 16th and 17th Streets are examples of acceptable style benches. Designs that focus on memorializing the lives of individuals will not be considered.

### Design Guidelines

- Americans with Disabilities Act (ADA) compliant, allowing a 48" entryway for wheelchair access
- Surface mounted (i.e. bolted in place)
- Materials should be environmentally sound
- Back rests and arm rests are optional
- Colors selected for the benches are to be lighter muted hues

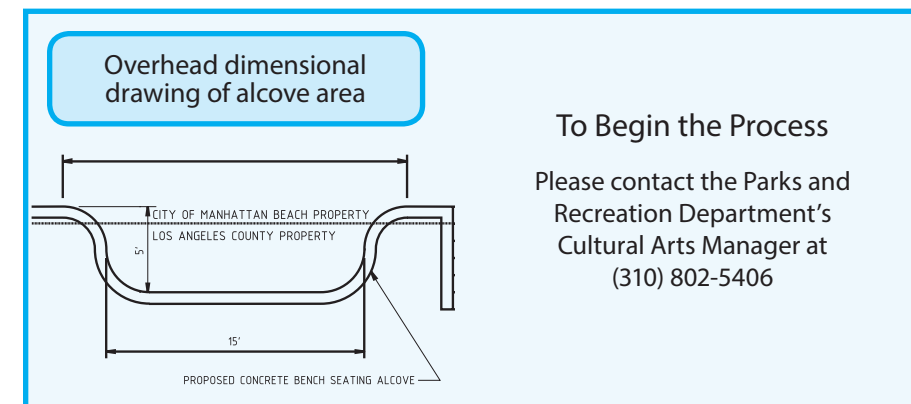
### Artist and Donor Recognition

Recognition of the artist and donor for each Bench/Alcove area may be placed in a discreet location and the size of the letters will be no larger than one inch high. Wording as follows:

- Donated by \_\_\_\_\_ - Artist: \_\_\_\_\_

### City Acknowledgment

A letter and Certificate of Appreciation signed by the Mayor and City Council will be issued.



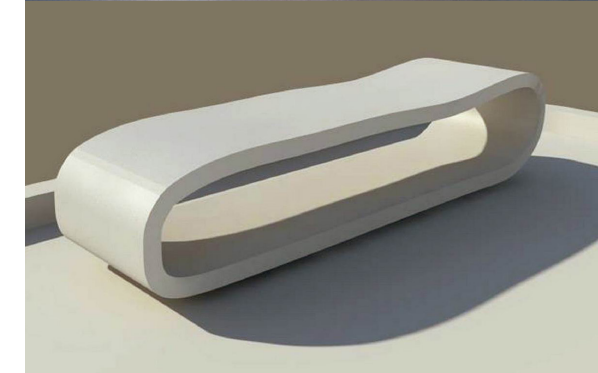
### To Begin the Process

Please contact the Parks and Recreation Department's Cultural Arts Manager at (310) 802-5406

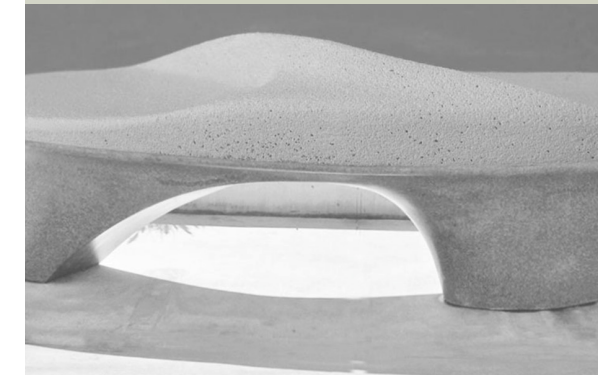
## PRE-APPROVED DESIGNS



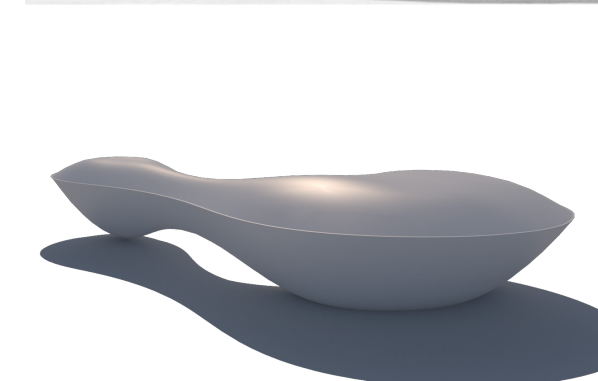
THE WAVE  
by Stacy Dukes



THE LOOP  
by Sparano + Mooney  
Architecture  
Artist Rendering



WAVE II  
by Stacy Dukes  
Artist Rendering



PUDDLE  
by Ball & Nogues Studio  
Artist Rendering