

Veterans Parkway Landscape Improvements

CITY OF MANHATTAN BEACH



Site '1A' & 1B:

The primary goal of Site '1A' & '1B' is to provide better defined trail entry points to the Veterans Parkway while implementing (VPLMPG) strategies.

Experiences

Shaded Boulder Seating

Plant Material

Shade Trees

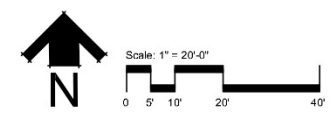
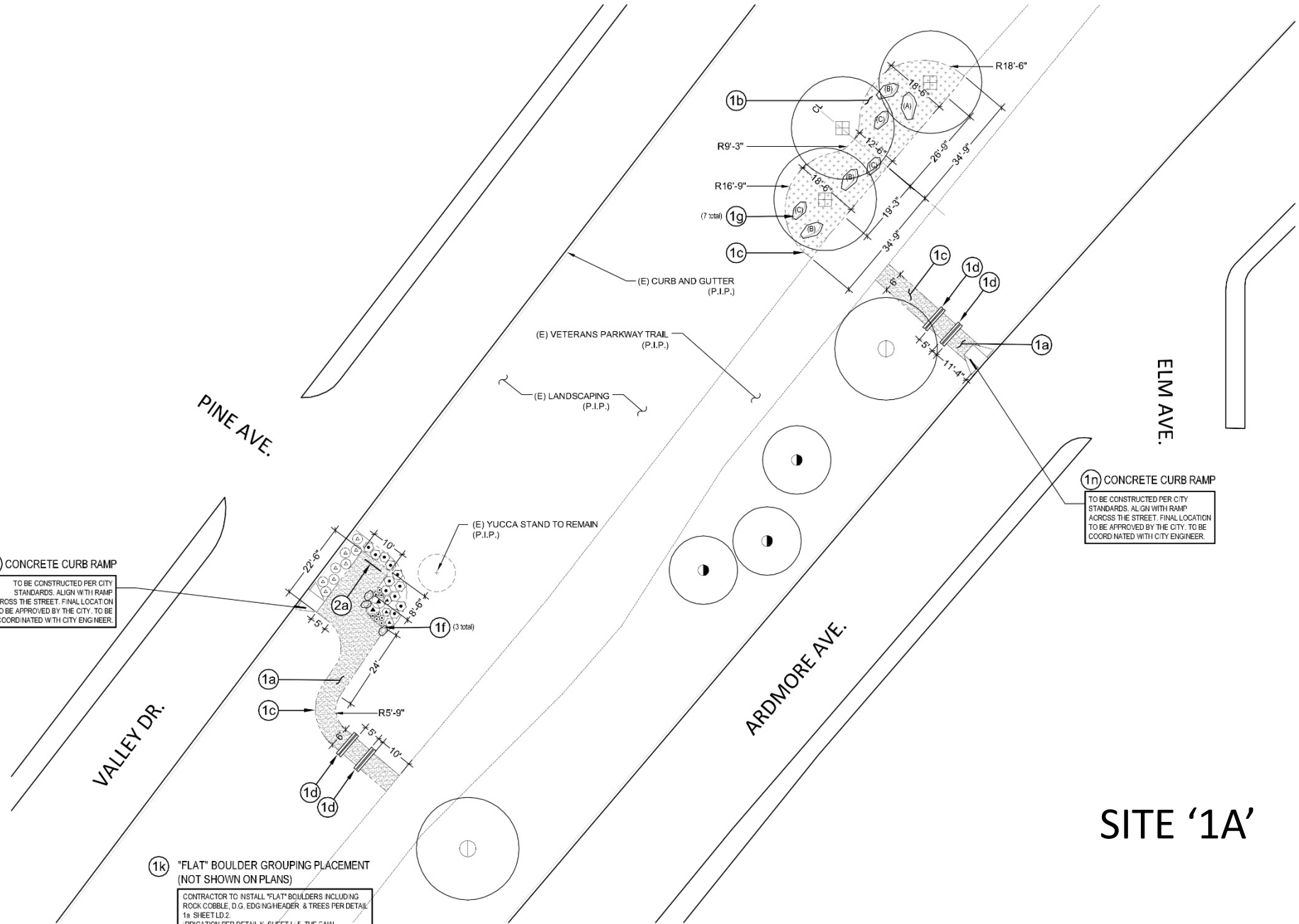
Landscape Elements

Landscape Boulder Seating Opportunities

1n CONCRETE CURB RAMP
TO BE CONSTRUCTED PER CITY STANDARDS. ALIGN WITH RAMP ACROSS THE STREET. FINAL LOCATION TO BE APPROVED BY THE CITY. TO BE COORDINATED WITH CITY ENGINEER.

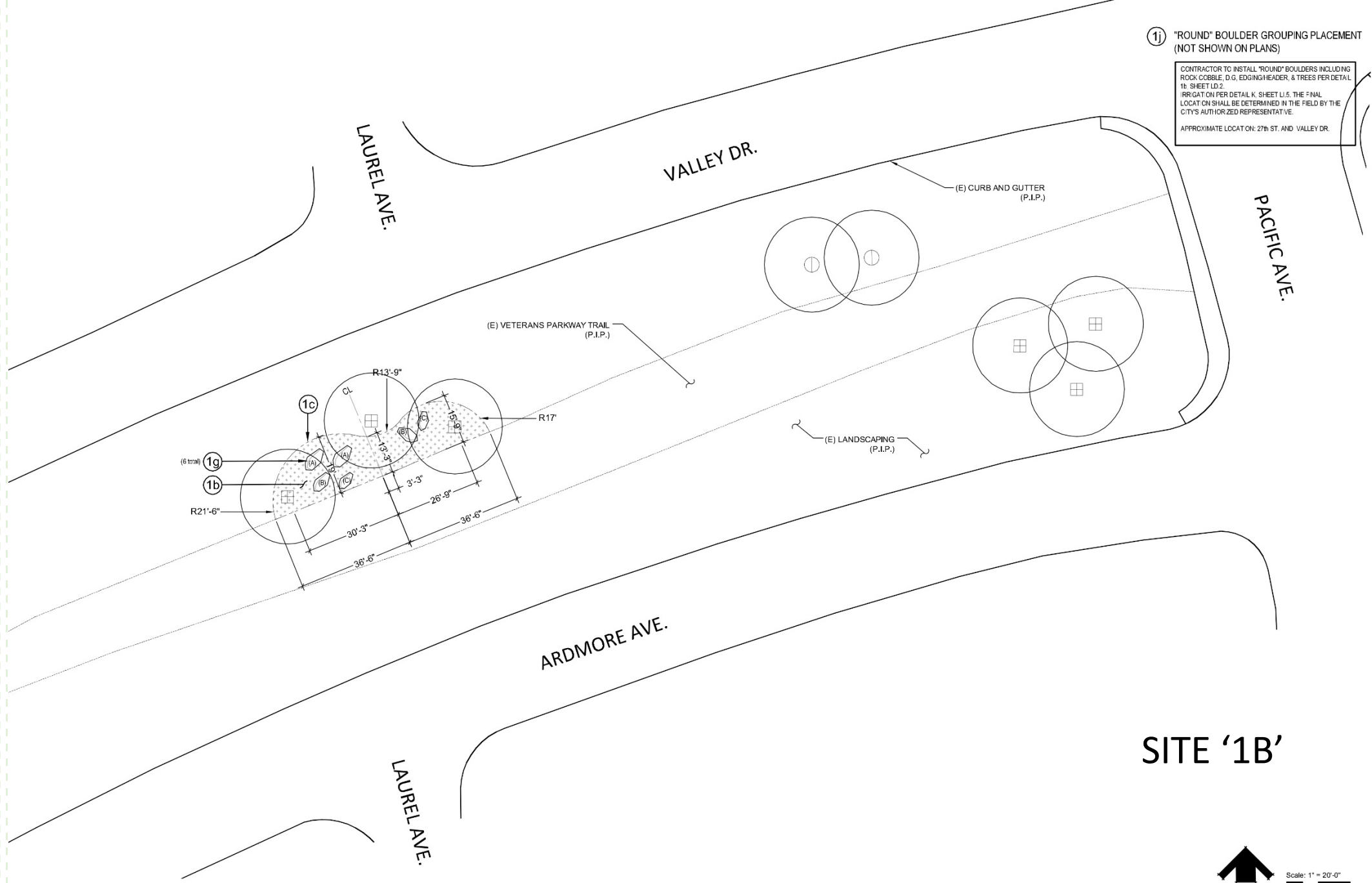
1n CONCRETE CURB RAMP
TO BE CONSTRUCTED PER CITY STANDARDS. ALIGN WITH RAMP ACROSS THE STREET. FINAL LOCATION TO BE APPROVED BY THE CITY. TO BE COORDINATED WITH CITY ENGINEER.

1k "FLAT" BOULDER GROUPING PLACEMENT (NOT SHOWN ON PLANS)
CONTRACTOR TO INSTALL "FLAT" BOULDERS INCLUDING ROCK COBBLE, D.G. EDGING/HEADER, & TREES PER DETAIL 1a SHEET LD.2.
IRRIGATION PER DETAIL K, SHEET L.5. THE FINAL LOCATION SHALL BE DETERMINED IN THE FIELD BY THE CITY'S AUTHORIZED REPRESENTATIVE.
APPROXIMATE LOCATION: WALNUT ST. JUNCTION ON ARDMORE AVE. SIDE.

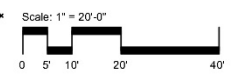


1j) "ROUND" BOULDER GROUPING PLACEMENT
(NOT SHOWN ON PLANS)

CONTRACTOR TO INSTALL "ROUND" BOULDERS INCLUDING
ROCK COBBLE, D.G. EDGING HEADER, & TREES PER DETAIL
1b: SHEET LD.2.
IRRIGATION PER DETAIL K, SHEET LD.5. THE FINAL
LOCATION SHALL BE DETERMINED IN THE FIELD BY THE
CITY'S AUTHORIZED REPRESENTATIVE.
APPROXIMATE LOCATION: 27th ST. AND VALLEY DR.



SITE '1B'



REFER TO SHEET LC.1 FOR PLANTING NOTES



Site '1C' & 1D:

The goal of Site '1C' & '1D' is to reduce turf grass and water use along the Veterans Parkway trail, while further implementing (VPLMPG) strategies.

Experiences

- Naturalistic Garden 'Node'

- Better Access to Trail

Plant Material

- Shade Trees

- Shrub & Groundcover Planting

Landscape Elements

- Landscape Boulder Seating Opportunities

- 1k "FLAT" BOULDER GROUPING PLACEMENT
(NOT SHOWN ON PLANS)

CONTRACTOR TO INSTALL "FLAT" BOULDER GROUPINGS INCLUDING ROCK CONSOLE, C/D, EDGING/HEDGER, & FINDER PER DETAIL 1A, SHEET 1D.2. PRELAYOUT ON PER DETAIL 1A, SHEET 1D.2. THE FINAL LOCATION SHALL BE DETERMINED IN THE FIELD BY THE CITY'S AUTHORIZED REPRESENTATIVE.

APPROXIMATE LOCATION BETWEEN 18th ST. AND 19th ST. JUNCTION ON VALLEY DRIVE SIDE.
- 1k "FLAT" BOULDER GROUPING PLACEMENT
(NOT SHOWN ON PLANS)

CONTRACTOR TO INSTALL "FLAT" BOULDER GROUPINGS INCLUDING ROCK CONSOLE, C/D, EDGING/HEDGER, & FINDER PER DETAIL 1A, SHEET 1D.2. PRELAYOUT ON PER DETAIL 1A, SHEET 1D.2. THE FINAL LOCATION SHALL BE DETERMINED IN THE FIELD BY THE CITY'S AUTHORIZED REPRESENTATIVE.

APPROXIMATE LOCATION BETWEEN 18th ST. AND 19th ST. JUNCTION ON 38 ARDMORE AVE.

1n CONCRETE CURB RAMP
TO BE CONSTRUCTED PER CITY STANDARDS, ALIGNED WITH RAMP ACROSS THE STREET. FINAL LOCATION TO BE APPROVED BY THE CITY. TO BE COORDINATED WITH CITY ENGINEER.

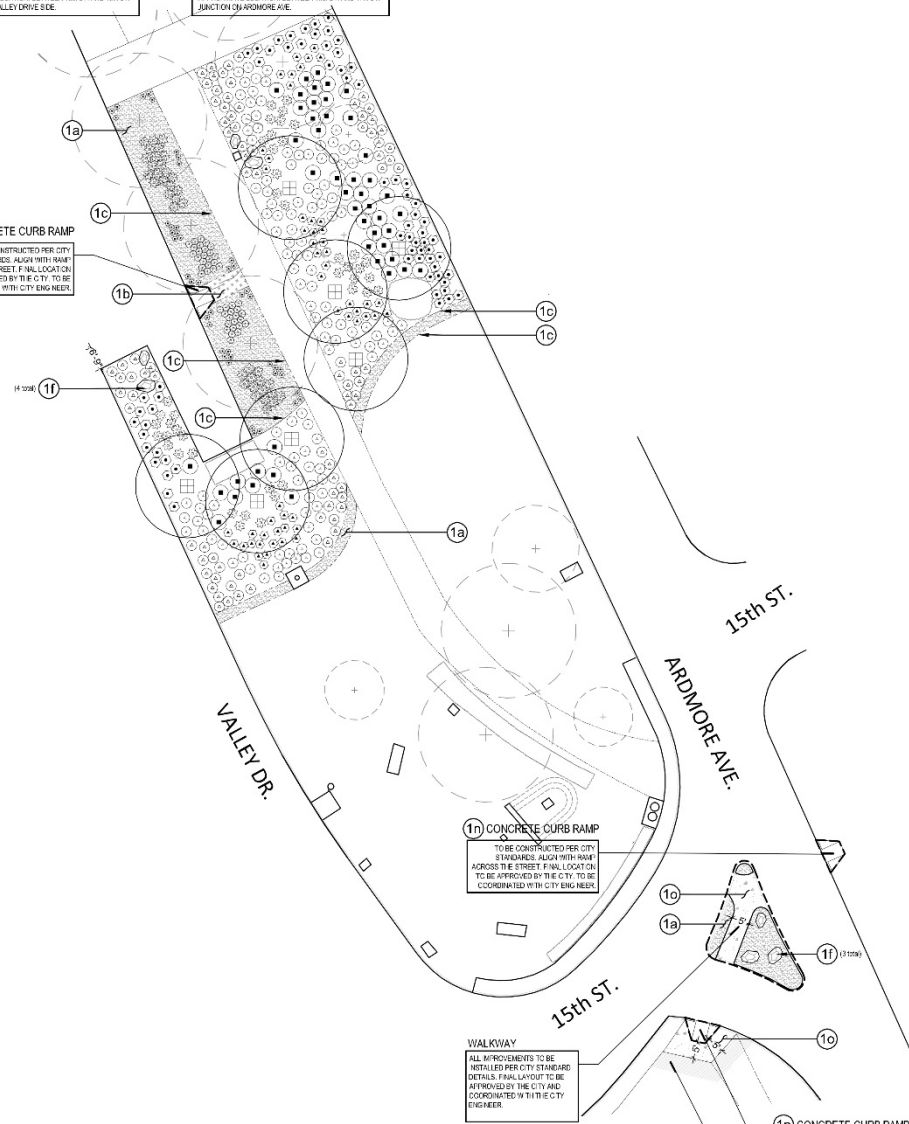
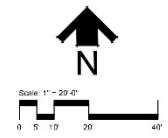
1n CONCRETE CURB RAMP
TO BE CONSTRUCTED PER CITY STANDARDS, ALIGNED WITH RAMP ACROSS THE STREET. FINAL LOCATION TO BE APPROVED BY THE CITY. TO BE COORDINATED WITH CITY ENGINEER.

WALKWAY
ALL IMPROVEMENTS TO BE INSTALLED PER CITY STANDARD DETAILS. PRELAYOUT TO BE APPROVED BY THE CITY AND COORDINATED WITH THE CITY ENGINEER.

1n CONCRETE CURB RAMP
TO BE CONSTRUCTED PER CITY STANDARDS, ALIGNED WITH RAMP ACROSS THE STREET. FINAL LOCATION TO BE APPROVED BY THE CITY. TO BE COORDINATED WITH CITY ENGINEER.

REPAIR / INSTALL
AREA DISTURBED BY CONCRETE CURB RAMP INSTALLATION SHALL BE REPAIRED TO THE SATISFACTION OF THE CITY. INSTALL ADJACENT CHALK TRAIL TO MATCH EXISTING WHERE NECESSARY.

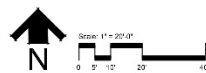
SITE '1C'



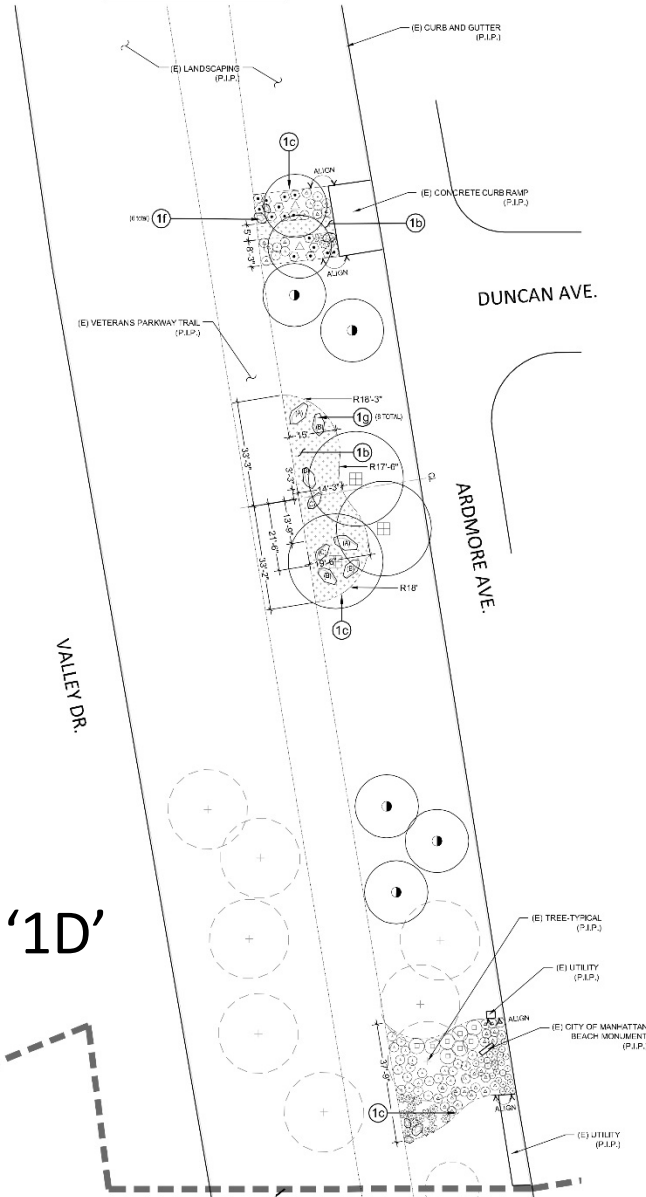
1) 'ROUND' BOULDER GROUPING PLACEMENT
(NOT SHOWN ON PLANS)

CONTRACTOR TO INSTALL 'ROUND' BOULDER RAILING
ROCK COBBLER, D.G. CONCRETE RAMP, & TREE PERCENTAGE
IS SHOWN.
BRIEF: CONCRETE RAMP, X. SHEET 1, 5, 11-12, 14-15
LOCATION SHALL BE DETERMINED IN THE FIELD BY THE
CITY OF MANHATTAN BEACH.
APPROXIMATE LOCATION: 2ND ST. AND ARDMORE AVE.

SITE '1D'



CITY LIMIT
NO IMPROVEMENTS BEYOND
THIS POINT





Site '2':

The goal of Site '2' is to reduce turf grass and water use along the Veterans Parkway trail, while further implementing (VPLMPG) strategies.

Experiences

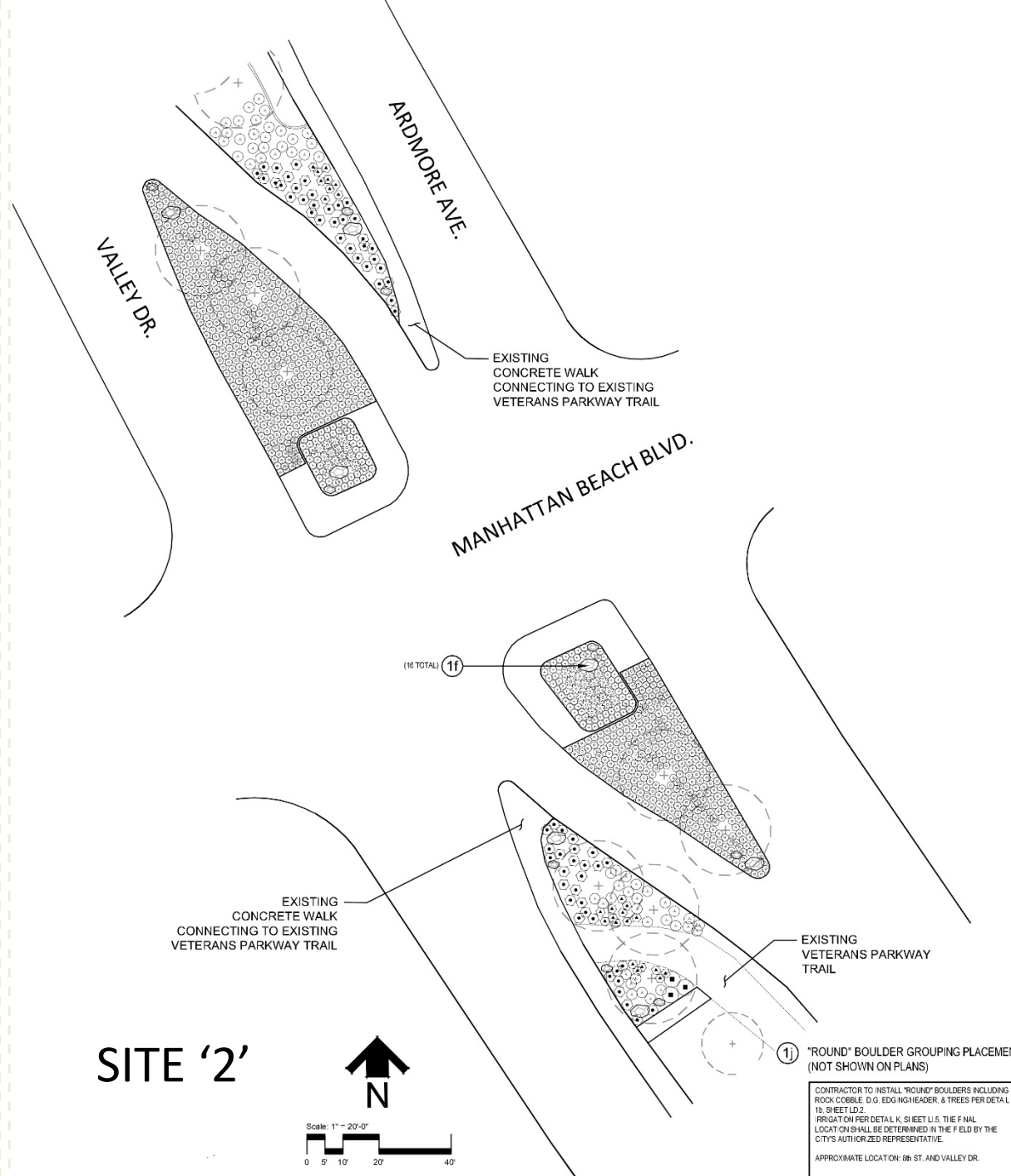
- Naturalistic Garden 'Node'
- Better Access to Trail

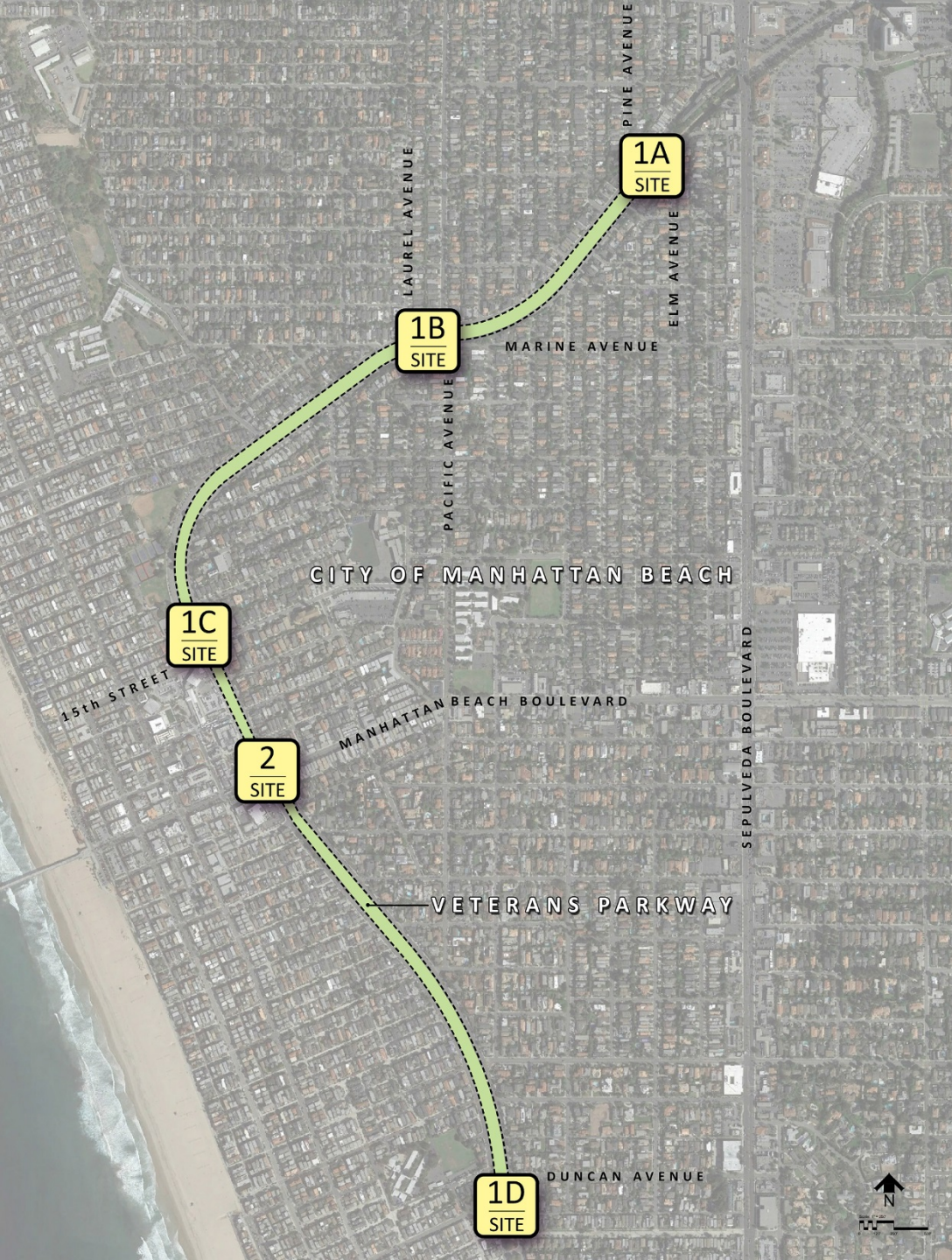
Plant Material

- Shade Trees
- Shrub & Groundcover Planting

Landscape Elements

- Landscape Boulder Seating Opportunities





Veterans Parkway Landscape Improvements

QUESTIONS & ANSWERS