



# Veterans Parkway

Proposal for Landscape Master Planning Services

## CITY OF MANHATTAN BEACH

October 24, 2012

### PROJECT TEAM:

**Landscape Master Planning: MIA LEHRER+ASSOCIATES**

Jeff Hutchins, RLA, ASLA, CLIA. Principal.

Jan Dyer, RLA, ASLA, Principal.

Michelle Sullivan, RLA, ASLA, ISA, LEED AP, Principal.

Astrid Diehl, Associate.

**MIA LEHRER+ASSOCIATES**  
**LANDSCAPE ARCHITECTURE**

[www.mlagreen.com](http://www.mlagreen.com)

## Table of Contents

Cover Letter	p. 01
Understanding of Job Description and Scope of Work	p. 03
Methodology and Work Plan	p. 04
Experience and Qualifications of Firm	
ML +A Firm Profile	p. 07
ML +A Projects	p. 08
Beverly Gardens Park – Beverly Hills, CA	
Expo Buffer Park – Santa Monica, CA	
Ballona Promenade Park – Playa Vista, CA	
Westside Rainwater Park – Los Angeles, CA	
Hillcrest Park Master Plan – Fullerton, CA	
Qualifications and Experience of Consultants	
Jeff Hutchins, RLA, ASLA, CLIA. Principal.	
Jan Dyer, RLA, ASLA. Principal.	
Michelle Sullivan, RLA, ASLA, ISA, LEED AP. Principal.	
Other Personnel	
Astrid Diehl. Associate.	
Kush Parekh. Associate.	
Staffing Availability	p. 16
References	p. 17
Contract Exceptions	p. 18
Fee Proposal (in sealed envelope)	

October 24, 2012

Ms. Gwen Eng  
Office of the City Clerk  
1400 Highland Avenue  
Manhattan Beach, CA. 90266

**Re: RFP # 890-13 Landscape Master Planning Services for the Veterans Parkway**

Dear Ms. Eng:

It is with great enthusiasm that Mia Lehrer + Associates (ML+A) submits our proposal for landscape architecture design services for the Veterans Parkway in Manhattan Beach. This effort by the City of Manhattan Beach represents an ***essential investment in the master planning and implementation of a linear greenway*** integrated with the neighborhoods of Manhattan Beach.

As exemplified by our projects, ***the focus of ML+A's landscape architecture practice is the planning and design of inspiring, sustainable and lasting public landscapes***, for the benefit of communities throughout Southern California. Our efforts to plan and design public parks and streetscape improvements in collaboration with agency officials and the communities who use them have resulted in the implementation of lasting community resources.

ML+A brings to this effort ***extensive experience collaborating with City officials and community members*** on prominent public park and streetscape projects. For example, with the City of Santa Monica, we are commencing the planning phase of Expo Buffer Park, a linear neighborhood pocket park adjacent to the proposed Exposition Phase II Metro Line. We are currently working with the City of Beverly Hills on the landscape restoration of Beverly Gardens Park, a 21-block linear historic park that is used for passive activities including walking, jogging, and community events. With the County of Los Angeles, we are working on several streetscape installation projects.

***ML+A is adept at designing projects in close collaboration with City staff, project stakeholders and communities.*** ML+A's strength is to build consensus for a project amongst individuals and interest groups, while bringing together stakeholders in workshop sessions to elicit feedback and visions for the project. We believe that a robust, well-organized and enjoyable community outreach process leads to inspired proposals that are embraced by communities and decision-makers.



ML+A's approach to this project is to provide a Master Plan that provides all of the components requested by the City at a level of detail that will gather the appropriate amount and types of data, communicate the proposed master plan ideas, and provide the information needed to make informed phasing decisions, all within the budget established by the City. To that end, ML+A's own staff will perform the scope of work.

Our **expert staff includes Principal-level experts who will collaboratively prepare the deliverables** and conduct the community outreach. Jeff Hutchins, Principal, will serve as project manager. With a depth of experience working with public agencies and their maintenance staff, Jeff will lead the master planning effort, serve in the role of the main client contact, provide the estimate of probable costs and other technical documents, and perform QA/QC review of the master plan document. Jan Dyer, Principal, will serve as community outreach lead, presenting the project at all community outreach and approval meetings. Michelle Sullivan, Principal and Certified Arborist, will be available to provide recommendations for existing trees and shrubs in the parkway. Astrid Diehl, Associate, will lead the conceptualization of Veterans Park and produce the deliverable. Both Astrid Diehl and Kush Parekh, Associate, are available to provide additional services on a task basis.

ML+A is looking forward to the possibility of working with the City of Manhattan Beach on this project of great benefit to the City. We have put forth our best professional effort in developing the scope of work and fee proposal. However, we welcome the opportunity to refine our approach to the scope and fee to ensure that it is consistent with the City's goals and expectations and captures exactly the level of effort warranted. We look forward to speaking with you further upon your review of our qualifications.

Sincerely,



Mia Lehrer, FASLA  
President, Mia Lehrer + Associates



Vista Hermosa Park - Native plant material along pedestrian trail

## Project Understanding

The City of Manhattan Beach is soliciting landscape design and master planning services for the City's Veteran's Parkway. The overall goal of the Landscape Master Plan is to work closely with the community to develop a blueprint for the use and potential improvements to the Veterans Parkway. Mia Lehrer + Associates (ML+A) will partner with the City to engage the City's local residents over the course of three community workshops to assist in the preparation of a Landscape Master Plan for the Veteran's Parkway. Over the course of the three workshops, we will inform the community of the opportunities and constraints of the project, solicit their vision and ideas, and propose a Landscape Master Plan that is the best meets the City's goals, captures the community's vision, considers technical issues and utilizes sustainable practices. At every step of the community outreach process, both the City and the community will have an opportunity to review, comment and provide recommendations, leading to consensus for the proposed ideas and approach.

The Landscape Master Plan will serve as a template for long-term improvement of the Veteran's Parkway. It will capture the parkway's uniqueness and potential and will provide a comprehensive vision which will address the challenges of the site location. As a part of the vision for Veteran's Parkway, the plan will address the plant material used in the enhancement of the parkway and will include a recommended plant palette. The plan shall include an analysis of the existing site conditions, recommendations for improvements, phasing/priority recommendations and estimate of probable costs. The plan shall emphasize sustainability, ease of access and egress and create a coherent design statement within the City of Manhattan Beach. To achieve the goals of unifying and beautifying the Veteran's Parkway in keeping with sustainable practices, ML+A will propose the use of drought-tolerant plant material that increases ease of maintenance, and maintains low maintenance costs.

3

Sustainability and conservation of resources are integral to the design of the parkway. Plan recommendations shall take into account considerations for sustainable planning, building, site, and design practices, and will also seek community input to achieve the expressed goal for sustainability. The sustainability considerations include: Permeable surfaces, habitat protection and enhancement, water use efficiency, reduced pesticide use, energy conservation and atmospheric impact, naturalized water conveyance where possible, development of stormwater retention capability, materials and resource use and efficiency, and more. ML+A will bring to the City and the community a palette of sustainable strategies appropriate for the project and solicit input.

ML+A shall engage the community to assist in determining the guidelines for improving the aesthetics of the Veteran's Parkway, while capturing the parkway's uniqueness and potential. Coordinating with interested residents, the Landscape Master Plan will propose guidelines to structure volunteer involvement in the design and implementation of future projects on the Greenbelt. ML+A will draw on its experience drafting landscape design and maintenance guidelines to prepare guidelines specifically tailored to the vision of the Veterans Parkway effort.

The culmination of the work preparing the Veterans Parkway Landscape Master Plan in collaboration with the City and the Community will be City Council Approval. ML+A is adept at presenting master planning documents and securing approval before City Councils and other approving bodies.

# Methodology and Work Plan

## **Task 1.0: Site Analysis and Assessment.**

- 1.1 Review existing project documentation: The Consultant shall review existing site information including site survey, previous outreach efforts, City plans, County and City codes, restrictions and processes, grant contract provisions, street improvement plans and irrigation system as-built drawings.
- 1.2 Prepare Community and Stakeholder Outreach List: With input from the City, the Consultant shall develop a community and stakeholder outreach list of parties interested in the master plan project, including adjacent neighbors, the Manhattan Beach Botanical Garden, the Greenbelt Restoration project, non-profit organization leadership, City Council members and staff.
- 1.3 Project kick-off meeting: The Consultant shall meet with the City staff to refine the project scope of work, project schedule and community outreach strategy.
- 1.4 Site Analysis: The Consultant shall conduct a site analysis. The site analysis will consider existing site conditions, opportunities and constraints and neighborhood and civic interests. The analysis shall also include an evaluation of existing trees, potential property uses, energy resources, conservation options, architectural uses and alternative landscape options for the purpose of maintaining and renovating the existing landscape. The Consultant shall prepare site analysis graphic presentation materials, including diagrams, to convey the data reviewed, opportunities, and constraints.

### Task 1.0 Meetings:

- One (1) Project Kick-Off Meeting
- One (1) Site Analysis Client Meeting

### Task 1.0 Deliverables:

- Community and Stakeholder Outreach List
- Site Analysis Materials

4

## **Task 2.0: Community Outreach, Public Input Process and Consensus Building Kick-Off.**

The Consultant shall commence the Community Outreach effort, build resident support for the project, and solicit community comment on the parkway design.

- 2.1 Needs Assessment: The Consultant shall conduct a needs assessment of the site outlining suggested park elements, including site furnishings, pedestrian lighting, signage and paving.
- 2.2 Park Elements: The Consultant shall prepare a list and imagery of proposed park elements and sustainability strategies for the parkway.
- 2.3 Client Meeting: The Consultant shall prepare the Community Outreach No. 1 presentation materials for review and comment by the Client.
- 2.4 Community Outreach Meeting No. 1: Site Analysis, Needs Assessment, Opportunities/Constraints and Programming. The Consultant shall present the project site analysis, needs assessment, and opportunities and constraints to the community for review and comment. Included in the presentation will be programming options and sustainability strategies for Veteran's Parkway. The agenda of this meeting is to establish priorities for the future improvements of the Parkway.

### Task 2.0 Meetings:

- One (1) Client Meeting
- Community Outreach Meeting No. 1

### Task 2.0 Deliverables:

- Needs Assessment, Park Programming, Opportunities/Constraints, Programming, Sustainability Strategies

## **Task 3.0: Draft Parkway Master Plan Schematics and Plant Palette.**

- 3.1 Master Plan: Based on Community Outreach Meeting No. 1, the Consultant shall develop the Draft Parkway Master Plan and Plant Palette. The Master Plan shall include:
  - 3.1.1 Site Analysis, Opportunities and Constraints, and Needs Assessment.
  - 3.1.2 Park Elements.
  - 3.1.3 Plant Palette: Making use of existing resources from the Manhattan Beach Botanical Garden and the Greenbelt Restoration Project, the Consultant shall prepare a proposed plant palette focusing on drought-tolerant and low-maintenance plant material.
  - 3.1.4 Phasing Plan: The Consultant shall identify the areas of the master plan that have the highest priorities for implementation.
- 3.2 Client Meeting: The Consultant shall prepare the draft Parkway Master Plan Schematics and Plant Palette for review and comment by the Client.
- 3.3 Community Outreach Meeting No. 2: Draft Parkway Master Plan. The Consultant shall present the Draft Parkway Master Plan to the Community for review and comment. The Master Plan shall include:
  - 3.1.1 Site Analysis, Opportunities and Constraints, and Needs Assessment.
  - 3.1.2 Park Elements.
  - 3.1.3 Plant Palette: Making use of existing resources from the Manhattan Beach Botanical Garden and the Greenbelt Restoration Project, the Consultant shall prepare a proposed plant palette focusing on drought-tolerant and low-maintenance plant material.
  - 3.1.4 Phasing Plan: The Consultant shall identify the areas of the master plan that have the highest priorities for implementation.

### Task 3.0 Meetings:

- One (1) Client Meeting
- Community Outreach Meeting No. 2

### Task 3.0 Deliverables:

- Draft Parkway Master Plan

## **Task 4.0: Estimate of Probable Costs and Maintenance Plan.**

- 4.1 Estimate of Probable Costs: The Consultant shall prepare an estimate of probable costs for the installation of proposed improvements.
- 4.2 Operating Cost Model and Maintenance Plan: The Consultant shall extrapolate data from previous phases and from Community Outreach Meeting No. 2 to prepare an operating cost model and maintenance plan. The maintenance plan shall address how the City may fund the maintenance of the parkway once each phase of installation is completed.

### Task 4.0 Meetings:

- One (1) Client Meeting

### Task 4.0 Deliverables:

- Estimate of Probable Costs
- Operating Cost Model and Maintenance Plan



# Methodology and Work Plan

## **Task 5.0: Policy for Donations and Volunteers.**

- 5.1 Policy for Donations and Volunteers: The Consultant shall develop a recommended policy that will address the best practices for inclusion of donations and volunteer labor at the Veterans Parkway. The recommended policy will be directly related to the proposed phasing plan. The Consultant shall potentially coordinate with department of Parks and Recreation.
- 5.2 Client Meeting: The Consultant shall prepare the final Parkway Master Plan for review and comment by the Client.
- 5.3 Community Outreach Meeting No. 3: Final Parkway Master Plan. Based on previous input from the Community and the Client, the Consultant shall present the Final Parkway Master Plan to the Community for review and comment. The Master Plan shall include:
  - 5.2.1 Site Analysis, Opportunities and Constraints, and Needs Assessment.
  - 5.2.2 Park Elements.
  - 5.2.3 Plant Palette: Making use of existing resources from the Manhattan Beach Botanical Garden and the Greenbelt Restoration Project, the Consultant shall prepare a proposed plant palette focusing on drought-tolerant and low-maintenance plant material.
  - 5.2.4 Phasing Plan: The Consultant shall identify the areas of the master plan that have the highest priorities for implementation.
  - 5.2.5 Estimate of Probable Costs.
  - 5.2.6 Operating Cost Model and Maintenance Plan.
  - 5.2.7 Policy for Donations and Volunteers.

## 6

### Task 5.0 Meetings:

- One (1) Client Meeting
- Community Outreach Meeting No. 3

### Task 5.0 Deliverables:

- Final Parkway Master Plan

## **Task 6.0: Presentation to City Council for Action.**

- 6.1 Meeting with City Council Staff: The Consultant shall conduct a preliminary meeting with City Council to present the plan and receive comments.
- 6.2 City Council Presentation: The Consultant shall make a presentation to City Council detailing the community outreach efforts, components of the plan including phasing and estimated costs, and maintenance priorities.

### Task 6.0 Meetings:

- One (1) Client Meeting
- One (1) City Council Staff Meeting
- One (1) City Council Hearing

### Task 6.0 Deliverables:

- Final Parkway Master Plan Powerpoint
- Final Parkway Master Plan document. One hard copy and one electronic copy.



## Firm Profile

**Mia Lehrer + Associates** is a full-service landscape architecture practice located in Los Angeles, California. Under the leadership of Mia Lehrer, FASLA, the firm has led the design and implementation of a diverse range of public and private projects. The firm applies a **comprehensive and intensely creative approach** to all projects, which vary in scale from large urban projects engaging community members and public agency stakeholders, to intimate gardens where collaboration and coordination of architecture and site are the primary objective.

**We work closely with public agencies, project stakeholders and communities** to create parks, open spaces, streetscapes, campuses and institutional facilities that meet the diverse needs of the people who will visit them. Mia Lehrer + Associates has led expert multi-disciplinary teams in the planning, design and implementation of large, regional parks and small pocket parks that have been developed with funding from grants, infrastructure programs and public private partnerships.

Our **extensive experience providing services on behalf of public agencies** includes park planning and development, community and stakeholder outreach, preparation of master and concept plans, trail design, design of nature parks/areas, and work on historic sites. Mia Lehrer + Associates has performed services for the City of Los Angeles Department of Recreation and Parks, the City of Los Angeles Bureau of Engineering, the City of Los Angeles Department of Water and Power, the Metropolitan Water District, the County of Los Angeles Department of Public Works, the California Coastal Conservancy, the Santa Monica Mountains Conservancy, the Los Angeles Unified School District, the Beverly Hills Unified School district and numerous other public agencies. Our experienced staff, with seven licensed landscape architects, includes world class designers and senior technical staff who deliver comprehensive construction documents and provide comprehensive construction administration services.

A significant element of Mia Lehrer + Associates approach to planning, design and implementation of public parks and civic spaces is Community Outreach. ML+A's strength is to navigate the process of developing consensus for a project amongst different interest groups, while bringing together stakeholders in workshop sessions to elicit ideas, opinions and visions. **ML+A applies proven strategies to community outreach meetings**, ultimately engendering a willingness among workshop participants to engage in the collaborative process, thereby building support and enthusiasm for a project over time.

Mia Lehrer + Associates is a **recognized leader in the field of sustainable design** and has been responsible for site design on LEED certified projects at all levels. We approach sustainable design as a tool to improve our environment and achieve higher and healthier levels of integration with natural systems. We incorporate sustainable strategies such as native and water conserving plantings, highly efficient irrigation systems, and various methods to achieve ground water recharge and stormwater quality improvements. We believe that all projects, whether large parks or urban courtyards, deserve innovative design matched by intelligent, sustainable practices.

Our primary focus is on envisioning and **creating exceptional public landscapes**. We do not begin any of our projects with a preconceived notion; rather, we ask questions of ourselves, our client, and our team, which inform the design and development process. The diverse nature of our clients and projects demonstrates our ambitious and comprehensive perspective. Regardless of scale or level of complexity, we remain committed to innovative design, quality service, the process of collaboration, and the belief that landscape has the power to enhance the livability of a city and heal the land.

# Experience and Qualifications of Firm

## Beverly Gardens Park

Beverly Hills, CA

**Size:** 1.9 miles, 18.8 acres, 23 Park Blocks

**Completed:** Ongoing

**Project Team:** Mia Lehrer, *President*  
Michelle Sullivan, *Project Manager*

**Owner:** City of Beverly Hills

**Client:** Friends of Beverly Gardens Park

Beverly Gardens Park is known for its iconic fountains, long shaded garden walkways, specialty gardens and the Beverly Hills Sign welcoming all that visit the city. After several decades of well-worn use, the park is in need of restoration. ML+A prepared a Restoration Plan that identifies and prioritizes future park improvements. The scope of work included inventory and analysis of the existing site conditions, studies of specialty features, recommendations for improvements, phasing strategy and an opinion of probable costs.

The immediate recommendations focused on areas in need of repair or replacement, such as damaged hardscape or sparse plant material. Additional recommendations were based on improvements to meet the needs of the current community, increased park patronage, additional park programming and strategies for sustainable park design.

A previous major park feature between Canon Drive and Beverly Drive was a large lily pond. The team examined strategies to restore this block with a prominent lily pond that was once a very popular feature. The Lily Pond & four other blocks have been identified for the first phase of restoration to be completed by the end of 2013.



*Kusama Tulips Garden, Block 15*



*Monument Sign/Lily Pond Garden, Block 14*



*"Hunter and Hounds" Garden, Block 13*



*Illustrative Plan*



## Expo Buffer Park Santa Monica, CA

**Size:** 2.35 acres  
**Completed:** Ongoing  
**Project Team:** Mia Lehrer, *President*  
 Jeff Hutchins, *Project Manager*  
**Owner:** City of Santa Monica

Mia Lehrer + Associates is commencing the planning phase of a 2.35 acre neighborhood park on a linear site immediately south of the new Expo Maintenance Facility in the City of Santa Monica. The site is two blocks wide, narrowing to approximately 55 feet in the middle section. ML+A will create a high-quality neighborhood park which mitigates the visual impact of the new Expo Maintenance Facility and proposed sound wall on the adjacent neighborhood.

The project will be designed and constructed with an emphasis on sustainable strategies. ML+A will propose a design and specify construction techniques that increase life-cycle economic return, increase durability and recyclability of construction materials and systems, minimize resource use (including energy, water and materials), minimize waste, minimize site and neighborhood disruption, and minimize pollution, all while providing a beautiful passive park for the adjacent neighborhood.



BIOSWALE

GREEN WALLS

### SUSTAINABILITY STRATEGIES



Biodiversity

DROUGHT TOLERANT PLANTS



Illustrative Diagram



### Ballona Promenade Park Los Angeles, CA

**Size:** 1.375 lf  
**Completed:** 2002  
**Project Team:** Mia Lehrer, *President*  
**Owner:** Playa Capital, LLC

Ballona Promenade Park is a passive recreational area along the Ballona creek. The park is the first along the channel that is intentionally designed to have views of the Creek. The 1,375 foot linear promenade park provides outdoor amenities for local residents, visitors and passersby that in the future will connect the city of Los Angeles to the Santa Monica Bay.

The park's design is a modern interpretation of the native waterway, drawing from the riparian habitat that exists now, and before the creek was channeled. Sinewy, blue benches reflect the historic water course that once curved and changed with the weather. Native plantings and permeable paving filter rain water before it reaches the creek. Patterned paving marks the point where benches are located along the path, and add an interesting feature to the linear park. This linear park aims at mediating between Los Angeles County Flood Control maintenance access and fire truck access roads for this new development and desire for park space along the channel.

A gentle bike path is perfect for novice riders, dog walkers, or those who might stop frequently to take in the views or observe the birds that inhabit the estuarial landscape. As bird watching is one of American's favorite pass times, the park provides a comfortable place for enthusiasts to come to watch herons, egrets, and many other species. Barbeques, tables and grassy areas are available for picnics. Within walking distance of nearby neighborhoods, these public spaces will undoubtedly become a popular place to host small events while enjoying the outdoors.

Ballona Promenade Park sets a precedent for future parks and paths along the Creek. The project tested the willingness of all of the agencies involved to be flexible and allow the public to use these infrastructure corridors in Los Angeles. As the population continues to grow in the area (due to several ambitious development projects), the availability of open public space for children and adults, and opportunities for passive recreation, will be increasingly important.



*Barbeque area*



*Game tables at creek*



*Bench detail*





*Picnic Area*

11



*Viewing Area*



# Experience and Qualifications of Firm

## Westside Rainwater Park

Los Angeles, CA

**Size:** 4.05 acres  
**Completed:** 2011  
**Project Team:** Mia Lehrer, *President*  
Jeff Hutchins, *Project Manager*  
**Owner:** City of Los Angeles  
Bureau of Engineering

Westside Rainwater Park is a unique project that utilizes a state-of-the-art stormwater capture system to irrigate the shrub and turf areas of a neighborhood pocket park.

In addition to the water quality components, the project includes recreational amenities for the community such as: multi-use decomposed granite paths, childrens play equipment, and a drought-tolerant sensory garden as an extension of the dry creek. The park also includes new perimeter fencing and signage.

Proposition O funded the design of a system that pumps storm water out of an existing covered stormwater drainage channel for use by the irrigation system. The Epic underground irrigation system, a gravity-fed system that filters water, was utilized as an integral part of the overall design. The low flow allows for the planting medium(sand) to absorb the water and make it available for the turf, delivering irrigation water from the root zone to the surface. Excess water that has been filtered by the planting medium then drains back into the storm water system.



*Dry Creek Demonstration Garden and play area*



*Multi- Use Decomposed Granite Path*



*Illustrative plan*



Funded by:

## proposition H<sub>2</sub>O

### PROPOSITION OBJECTIVES

- Protect rivers, lakes, beaches, and the ocean
- Conserve and protect drinking water and other waters sources
- Reduce flooding and utilize neighborhood parks to decrease polluted runoff
- Capture, clean up, and reuse storm water

**Herb Wesson**  
District 10 Councilman

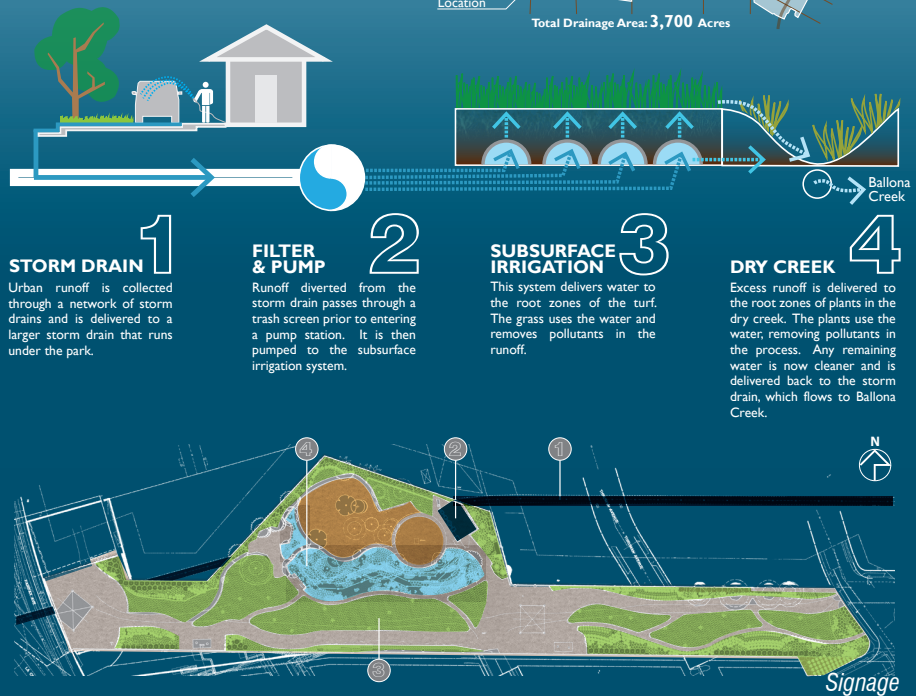


Park Opened July, 2011

### PARK OVERVIEW

Westside Park has been redeveloped to clean urban runoff and to provide an improved park for the community to enjoy. Water quality features of the park remove pollutants such as trash, bacteria, metals, nutrients, petroleum products (oil, gasoline, grease) from runoff in an existing storm drain that flow into Ballona Creek and, eventually, the ocean. New park features include a universally accessible playground, fitness equipment, walking paths, fencing, solar-powered lights, and a sensory garden in the dry creek.

Urban runoff is water that picks up pollutants as it flows over streets, sidewalks, and land on its way to storm drains. It is caused by over-irrigation, spills, on-street car washing, pavement wash-downs, construction site runoff, etc. During dry weather, an average of 36,700 gallons per day flows through the storm drain under the park. The runoff comes from the 3,700-acre drainage area shown.



Dry Creek Demonstration Garden



# Hillcrest Park Master Plan

## Fullerton, CA

**Size:** 38 acres  
**Completed:** 2010  
**Project Team:** Mia Lehrer, *President*  
Jeff Hutchins, *Project Manager*  
**Owner:** City of Fullerton

Mia Lehrer + Associates provided master planning services for the complete renovation of Hillcrest Park, a historic park located in the City of Fullerton. The master plan for Hillcrest Park was informed by the historic preservation goals. The identification of existing historic features lead to a plan that enhances the history of the site by introducing programs and amenities that will reinforce the original intent of the park, while evolving and responding to current needs.

Extensive community outreach with stakeholders and city officials was conducted, allowing the team to incorporate creative solutions to address community concerns. The park was studied from the perspectives of past, present and future which coexist within the park. The historic elements of the park represent the past which will be protected, preserved, and enhanced. The present represents the programs and amenities that are necessary for the current citizens, including reshaping and scaling amenities up or down. As a future park, we address the environment for our future generations. Drought tolerant planting and state of the art sustainable technologies will make this park become a model for future high performance parks.

Hillcrest Park was added to the National Register of Historic Places in 2004. The park renovation master plan identifies various features of the park and proposes a framework for renovation of the park in a manner that maintains and enhances the park's National Register status.







# Experience and Qualifications of Consultants

## Jeff Hutchins, *RLA, ASLA, CLIA, Principal*

### EDUCATION

California State Polytechnic  
University, Pomona  
*Bachelor of Science in Landscape  
Architecture, 1990*

### PROFESSIONAL LICENSES

California, #3815

Certified Landscape Irrigation Auditor,  
#7920

### ORGANIZATIONS

American Society of  
Landscape Architects, *Member*

San Gabriel Mountains Regional  
Conservancy, *Director*

La Verne Land Conservancy,  
*Director*

UCLA Landscape Architecture  
Extension Advisory Board

Cal Poly Pomona Landscape  
Architecture Advisory Board

### PREVIOUS PARTICIPATION

ASLA Southern California  
Chapter, *Treasurer*

*Jeff Hutchins has over 25 years of experience as a landscape architect and is also a Certified Landscape Irrigation Auditor. Mr. Hutchins has led the design and implementation of a variety of large-scale projects including comprehensive master planning, developments for individual park sites and streetscape improvements, and has been responsible for Master Plan project management, irrigation design, quality assurance and construction administration services. Mr. Hutchins' extensive construction knowledge aides in the production of economic, and efficient construction documents. He currently performs landscape plan review for the City of Azusa.*

*Mr. Hutchins has also served as a city landscape architect to the Cities of San Dimas, San Gabriel, La Verne, West Covina, and Azusa, providing design review, plan check services, ordinance writing, and advisory services for tree protection programs, street tree programs and maintenance guidelines. He is committed to sustainable mobility and watershed planning and applying sustainable principles to project design.*

### PROFESSIONAL EXPERIENCE

2005-Present	Mia Lehrer + Associates, <i>Associate, Principal</i>
2001-2005	California Landscape & Design, <i>Lead Landscape Architect</i>
1995-2001	Lawrence R. Moss and Associates <i>Associate, Project Manager</i>
1990-1995	Mia Lehrer + Assoc., <i>Landscape Designer, Drafter</i>
1987-1990	Stone & May Landscape Architects, <i>Designer/Drafter</i>
1986-1987	Florian Martinez and Associates, <i>Drafter</i>

### SELECTED PROJECT EXPERIENCE

Alamo River Trail Project – Holtville, CA  
Los Angeles River Greenway Project Phase II, – Los Angeles, CA  
101 Hollywood Freeway Ramps Environmental Enhancement – LA, CA  
Campus Ave, 9th St and 2nd Ave Streetscape – Upland, CA  
Central Region Elementary School #21 – Los Angeles, CA  
Diamond Elementary School – Santa Ana, CA  
Eastern Avenue Streetscapes – Los Angeles, CA  
Expo Buffer Park – Santa Monica, CA  
Flagstaff BMX Park – Flagstaff, AZ  
Greenville Elementary School – Santa Ana, CA  
Hillcrest Park Master Plan – Fullerton, CA  
Kennedy Elementary School – Santa Ana, CA  
Lemon Creek Restoration – Walnut, CA  
Lowell Elementary School – Santa Ana, CA  
Los Angeles Mission College Family Guidance Center – Sylmar, CA  
Los Angeles Mission College Media Arts Center – Sylmar, CA  
Los Angeles Mission College East Campus – Sylmar, CA



*Lemon Creek Park*



# Experience and Qualifications of Consultants

## Jan Dyer, *RLA, ASLA, Principal*

### EDUCATION

University of California at Los Angeles, Extension, *Professional Designation Certificate, Landscape Architecture, 2006*

### PROFESSIONAL LICENSES

CALIFORNIA #5623

### ORGANIZATIONS

American Society of Landscape Architects, *Member*

Urban Land Institute, *Member*

Southern California Planning Congress, *Board of Directors*

*Jan Dyer has led project teams on various watershed, civic master plan, park design and higher education projects, responsible for project design through construction administration. Ms. Dyer provides creative and sustainable leadership in project design and excellent project management skills to all phases of projects. She is committed to the community design process and has facilitated numerous outreach meetings for the firm. She has been the Project Manager for several Los Angeles World Airport projects and many LACCD projects including three currently under construction at Mission College in Sylmar.*

### PROFESSIONAL EXPERIENCE

2007-present	Mia Lehrer + Associates, Principal
2005-2006	LA Group, Project Manager and Design Associate
2004-2005	James Dean ASLA, Sr, Project Manager
1991-2004	Borstein Enterprises, Project Mgr. & Property Mgr.

### TEACHING EXPERIENCE

2005- 2009, CA State University, Dept. of Extended Learning, Northridge, CA, Landscape Design Certificate Program  
2009-Present, University of California at Los Angeles, Extension Landscape Architecture Program

### PROJECT EXPERIENCE

Atwater Bridge – Los Angeles, CA  
Biotech Campus – Thousand Oaks, CA  
Compton Creek Earthen Bottom Feasibility Study – Compton, CA  
East Los Angeles Transit Oriented District Specific Plan – LA, CA  
Jordan Downs Public Housing Master Plan – LA, CA  
Los Angeles Dept of Rec & Parks Citywide Needs Assessment – LA, CA  
Los Angeles Mission College Family Guidance Center – Sylmar, CA  
Los Angeles Mission College Media Arts Center – Sylmar, CA  
Los Angeles Mission College East Campus – Sylmar, CA  
Los Angeles Mission College Physical Education Building – Sylmar, CA  
Los Angeles Mission College Student Services – Sylmar, CA  
Los Angeles World Airports Bradley West Project – Los Angeles, CA  
Owens Lake Dust Mitigation Program Phase 7a – Lone Pine, CA  
Piggyback Yard Conceptual Master Plan – Los Angeles, CA  
Pitzer College Residential Life Phase II – Claremont, CA  
Sony Studios, Main Street – Culver City, CA  
Thermal Property Master Plan – Indio, CA  
Ventura Botanical Gardens Vision Plan – Ventura, CA



*Mission College Family Guidance Center*

# Experience and Qualifications of Consultants

## **Michelle R. Sullivan, RLA, ASLA, LEED AP, ISA, Principal**

### **EDUCATION**

University of California at Los Angeles, Extension  
*Professional Designation Certificate, Landscape Architecture, 1989*

University of California at Santa Barbara, *Bachelor of Arts Degree, Biological Science/Botany, 1983*

### **PROFESSIONAL LICENSES**

California, License #3525

Certified Arborist, Intl  
Society of Arborist  
Certification #WE-7431A

LEED Accredited Professional

### **ORGANIZATIONS/COMMITTEES**

American Society of  
Landscape Architects

International Society of Arborist  
Member

Member of CA Garden and  
Landscape Historic Society

### **EXHIBITION / JURIES**

Artist Participant- Art Exhibition,  
John Hench Gallery, WDI

Guest Reviewer- UCLA Extension  
Landscape Architecture

### **LECTURES**

"Inside the Los Angeles Studio"  
American Society of Landscape  
Architects Annual Convention  
2008, Philadelphia, PA 2008

Garden Speaker- "The Magic of  
Disney Landscape", the Nixon  
Library and Sherman Gardens

*Michelle has over 27 years of experience in landscape architecture with a focus on applying her horticultural expertise to project design. For the last two years she has been the project manager of the 3.5 acre Natural History Museum of Los Angeles County – North Campus project, an outdoor living exhibit focused on connecting the public to urban nature. For three and half years prior she has led the largest park design project nationally, the 1,347 acre Orange County Great Park in Irvine, California. The project involved a policy of continuing public involvement in every stage of the process of planning, design and implementation.*

*Prior to joining Mia Lehrer + Associates she worked for Walt Disney Imagineering, the resort and theme park design and engineering group for the Walt Disney Company for over 15 years. She has led the design and implementation of a range of projects from resort wide master plans, to theme park planning and development, to more focused theme park land, attraction, retail and entertainment venues.*

### **PROFESSIONAL EXPERIENCE**

2006-Present	Mia Lehrer + Associates, <i>Principal</i>
1991-2006	Walt Disney Imagineering, <i>Sr. Landscape Architect</i>
1988-1991	Burton & Spitz, <i>Lead Landscape Architect</i>
1984-1988	S. Roy Kato & Associates, <i>Landscape Designer</i>

### **PROJECT EXPERIENCE**

Alameda Substation Streetscape – Burbank, CA  
Glendale Animation Studios – Glendale, CA  
Grand View Park Master Plan – Rancho Palos Verdes, CA  
Lower Hess Park Master Plan – Rancho Palos Verdes, CA  
Natural History Museum of Los Angeles County, North Campus – LA, CA  
Orange County Great Park Master Plan and Botanic Garden – Irvine, CA  
*Chief of Staff at the Great Park Design Studio managing the landscape architecture team for the Master Plan, Schematic Design, Phase Development Projects and Feasibility Studies*  
Orange County Great Park Western Sector – Irvine, CA  
Tri City Park Master Plan – Placentia, CA

### **PREVIOUS PROJECT EXPERIENCE**

California Disneyland Resort – Anaheim, CA  
Disney California Adventure – planning, area development  
Disneyland – *Indiana Jones* attraction  
Hong Kong Disney Resort – Hong Kong  
*GLA Government Land Area*  
Tokyo Disneyland Resort – Tokyo, Japan  
Tokyo Disneyland – Development Planning  
Tokyo Disney Seas – *Tower of Terror, Raging Spirits* attractions



## Astrid Diehl, Associate

### EDUCATION

University of California Berkeley, CA  
*Master in Landscape Architecture*

School of Architecture,  
Paris Belleville, France  
*Bachelor of Architecture*  
*Master of Architecture*

### AWARDS | COMPETITIONS

LA CleanTech Corridor Competition  
*Sci-Arc and*  
*The Architects Newspaper*  
Winner, 2010

Farm on Wheels  
Competition  
*Good Magazine and*  
*The Architects Newspaper*  
Winner, 2009

### TEACHING

Teaching Assistant:  
USC Department of Landscape  
Architecture.  
Mission Yard, Recalibrate  
Infrastructures, Fall 2010  
Place in the Making, Strengthening  
the City Fabric, Fall 2011

Guest Critic:  
Sci-Arc 2009, 2010



Ventura Botanic Gardens

*Astrid Diehl is a project manager and designer who has led project design through construction administration on a wide range of projects including LAUSD schools, urban parks and mixed-use developments. Ms. Diehl is committed to social justice issues and community participation as they relate to design. She provides creative and sustainable leadership in project design and brings an international approach integrating art, culture and technology to landscape design. Ms. Diehl is committed to excellence in design, environmental practices and improved livability.*

*Ms. Diehl holds two masters degrees, one in Architecture and the other in Landscape Architecture from School of Architecture Paris Belleville and University of California at Berkeley respectively. Ms. Diehl's work focuses on advancing sustainable best management practices in projects and bringing an international perspective to the design process.*

### PROFESSIONAL EXPERIENCE

2008-Present Mia Lehrer + Associates, Los Angeles, CA  
2007-2008 Materials & Applications, Los Angeles, CA  
2006-2008 Sasaki Associates, CA  
2003-2004 Cabinet d'Architecture Georges Bannette, Paris, France

### PROJECT EXPERIENCE

East Los Angeles Third Street Corridor Strategic Plan – Los Angeles, CA  
Francis Garden – Los Angeles, CA  
Golden Age Farm – Versailles, Kentucky  
Grandview Park Master Plan – Rancho Palos Verdes, CA  
Hollenbeck Middle School Master Plan – Los Angeles, CA  
Keck Institute for Space Studies, Caltech Campus – Pasadena, CA  
Lower Hess Park Master Plan – Rancho Palos Verdes, CA  
MAS: Moving from Asphalt to Sustainable Schools – Los Angeles, CA  
Manual Arts High School Learning Garden – Los Angeles, CA  
Natural History Museum, North Campus – Los Angeles, CA  
Strange Invisible Perfumes – Venice, CA  
The Village – Santa Monica, CA  
Thermal Property Master Plan – Thermal City, CA  
Tri City Park Master Plan – Placentia, CA  
Ventura Botanic Garden Vision Plan – Ventura, CA  
Westside Leadership Magnet School – Marina Del Rey, CA  
Wuzhou Park Design Competition – Wuzhou, China

## Other Personnel

### Kush Parekh, *ASLA, Associate*

#### EDUCATION

The Ohio State University,  
Columbus, OH  
*Bachelors Degree of Landscape  
Architecture, with a minor in City  
and Regional Planning*

*Kush Parekh has been responsible for design and planning through construction administration on a wide range of projects including college campuses, civic spaces, urban parks, mixed-use developments and residential projects. Committed to sustainability and conservation, Mr. Parekh continues to provide leadership in applying sustainable principles to all projects through innovative design and creative use of materials and building techniques.*

#### ORGANIZATIONS

American Society of Landscape  
Architects (ASLA)

*Mr. Parekh brings an international approach to the design process with experience working on projects in Brazil, China, India, Egypt, Mexico and the US. He has a keen interest in environmental issues and on urban design solutions as they pertain to developing world initiatives.*

#### LECTURES/WORKSHOPS

Presenter,  
Professional Practice Workshop  
with the Ohio Chapter of ASLA,  
The Ohio State University,  
March 2006

#### PROFESSIONAL EXPERIENCE

2008-Present	Mia Lehrer + Associates, Los Angeles, CA
2006-2008	The Collaborative West, San Clemente, CA
2004-2006	POD Design, Columbus, OH
2003	NPA Architects, Mumbai, India

Los Angeles Contemporary  
Exhibitions Workshop,  
Hollywood, CA  
August 2010

#### PROJECT EXPERIENCE

Bio Tech Campus – Thousand Oaks, CA  
Cidade da Copa – Recife, Brazil  
Fortaleza Promenade – Brazil  
Haitang Bay Coastal Parks – Hainan, China  
Hillcrest Park Master Plan – Fullerton, CA  
Hollywood Park Mixed Use Development – Inglewood, CA  
Los Angeles Mission College East Campus – Sylmar, CA  
Natural History Museum, North Campus – Los Angeles, CA  
Petersen Building – Los Angeles, CA  
Pitzer College Residential Life Phase II – Claremont, CA  
Rio 2016 Olympic Park Master Plan Competition – Brazil  
San Bernardino Groundwater Mitigation Project – San Bernardino, CA  
Sony Studios, Main Street – Culver City, CA  
The Village – Santa Monica, CA  
Tri City Park Master Plan – Placentia, CA  
University of California, Riverside Master Plan – Riverside, CA  
Veterans Administration Building Retrofit – Los Angeles, CA

#### EXHIBITIONS

From Sand to City  
Holon, Israel  
September 2011



*Natural History Museum*

## Staffing Availability

Project Function	% of Time Allocated	Firm Name Lead Staff Members Current Engagements	Office Phone Numbers
Landscape Master Planning	15%	MIA LEHRER + ASSOCIATES <i>Jeff Hutchins</i> Alamo River Trail Expo Buffer Park Hart High School Ivar Property LA Riverfront Phase II Santa Monica Village	213/384-3844 <i>tel</i> 213/384-3833 <i>fax</i>
	15%	<i>Jan Dyer</i> Gerald Desmond Bridge Patton Park Mount Saint Mary's Marks Residence UCLA Medical School	
	05%	<i>Michelle Sullivan</i> Natural History Museum Elysian Park Alameda Substation Beverly Gardens Mark Mathias Botanical Garden Sunset Millenium	
	20%	<i>Astrid Diehl</i> Expo Buffer Park Ivar Park LAUSD Grant	
	20%	<i>Kush Parekh</i> Elysian Park Hollywood Park	

**BEVERLY GARDENS PARK** – Beverly Hills, CA.

Steven Zoet, Director of Community Services

City of Beverly Hills

444 North Rexford Dr., Beverly Hills, CA. 90210

310/285-2533 *direct*                      szoet@beverlyhills.org

**EXPO BUFFER PARK** – Santa Monica, CA.

Jean Bellman, Architect

City of Santa Monica Architecture Services

1437 4<sup>th</sup> Street, Suite 300

Santa Monica, CA. 90401

310/458-2205 *phone*                      jean.bellman@smgov.net

**BALLONA PROMENADE PARK** – Culver City, CA.

Thomas A. Jones (formerly Project Manager @ Playa Capital Company LLC)

1401 Flower St. Glendale, CA. 91201-2421

818/544-6500 *phone*                      tjones22@sbcglobal.net

**WESTSIDE RAINWATER PARK** – Los Angeles, CA

Iftekhar Ahmed, Prop. O Program Manager

City of Los Angeles Bureau of Engineering

1149 South Broadway, Suite 700

Los Angeles, CA. 90015-2213

213/485-5875 *phone*                      iftekhar.ahmed@lacity.org

**HILLCREST PARK MASTER PLAN** – Fullerton, CA

Hugo Curiel, Project Manager

City of Fullerton

303 W. Commonwealth Ave., Fullerton, CA. 92832

714/773-5798 *phone*                      HugoC@ci.fullerton.ca.us



- p. 19 of RFP, **Item D Professional Errors or Omissions** – a policy with minimum limits of five million dollars (\$5,000,000) per claim and aggregate.

*ML+A is able to meet the insurance requirements with the exception of the Professional Errors and Omissions requirement. ML+A carries a \$2,000,000 Errors or Omissions policy.*

- p. 22 of RFP, **Item D. 21 Indemnification**. CONTRACTOR agrees to indemnify, defend and hold harmless CITY and its elective or appointive boards, officers, agents, attorneys and employees from any and all claims, liabilities, expenses, or damages of any nature, including attorneys' fees arising out of, or in any way connected with performance of, the Agreement by CONTRACTOR, CONTRACTOR'S agents, officers, employees, subcontractors or independent contractor(s) hired by CONTRACTOR. This indemnity shall apply to all claims and liability regardless of whether any insurance policies are applicable. The policy limits do not act as a limitation upon the amount of indemnification to be provided by CONTRACTOR.

*ML+A does not have insurance coverage for contractual assumption of a third party's defense on its professional liability policy. The policy covers damages and not attorney fees. It does cover attorney fees to defend under ML+A's negligence.*

- p. 25 of RFP, **Insurance Endorsement Form #1 (General) Attachment "A"**.

18

*We are willing to consider including this endorsement on ML+A's policy. However, it appears that it is related to a specific event. We are open to further discussion with the City.*

- p. 27 of RFP, Indemnification and Hold Harmless Agreement Attachment "D".

*ML+A does not have insurance coverage for contractual assumption of a third party's defense on its professional liability policy. The policy covers damages and not attorney fees. It does cover attorney fees to defend under ML+A's negligence.*

**DESIGNING LANDSCAPES  
THAT INSPIRE.**

**USING TECHNOLOGIES  
THAT SUSTAIN.**

**CREATING PLACES  
THAT MATTER.**

**MIA LEHRER + ASSOCIATES**

3780 Wilshire Boulevard suite 250  
Los Angeles, California 90010  
tel 213/384-3844 fax 213/384-3833  
[www.mlagreen.com](http://www.mlagreen.com)