

Bruce's Beach Memorial Garden

Manhattan Beach California

Enviroscape LA

Current site

Site Design Considerations:

- **How the site is used**
- **Narrow sidewalk with mature trees - more lawn use on edges**
- **Busy Street**
- **Historical- many visitors and locals too**
- **Existing benches are not placed symmetrically**
- **Grade changes**



Design Option 1

The central focus is on the plaque. The circle is a powerful symbol of wholeness and a strong shape found easily in an otherwise jumbled mix of lawn and mature trees.

The concrete circle is accessible without needing a large turn around. The native plants will spill out of their beds and surrounding native grasses further soften the edges of the concrete.

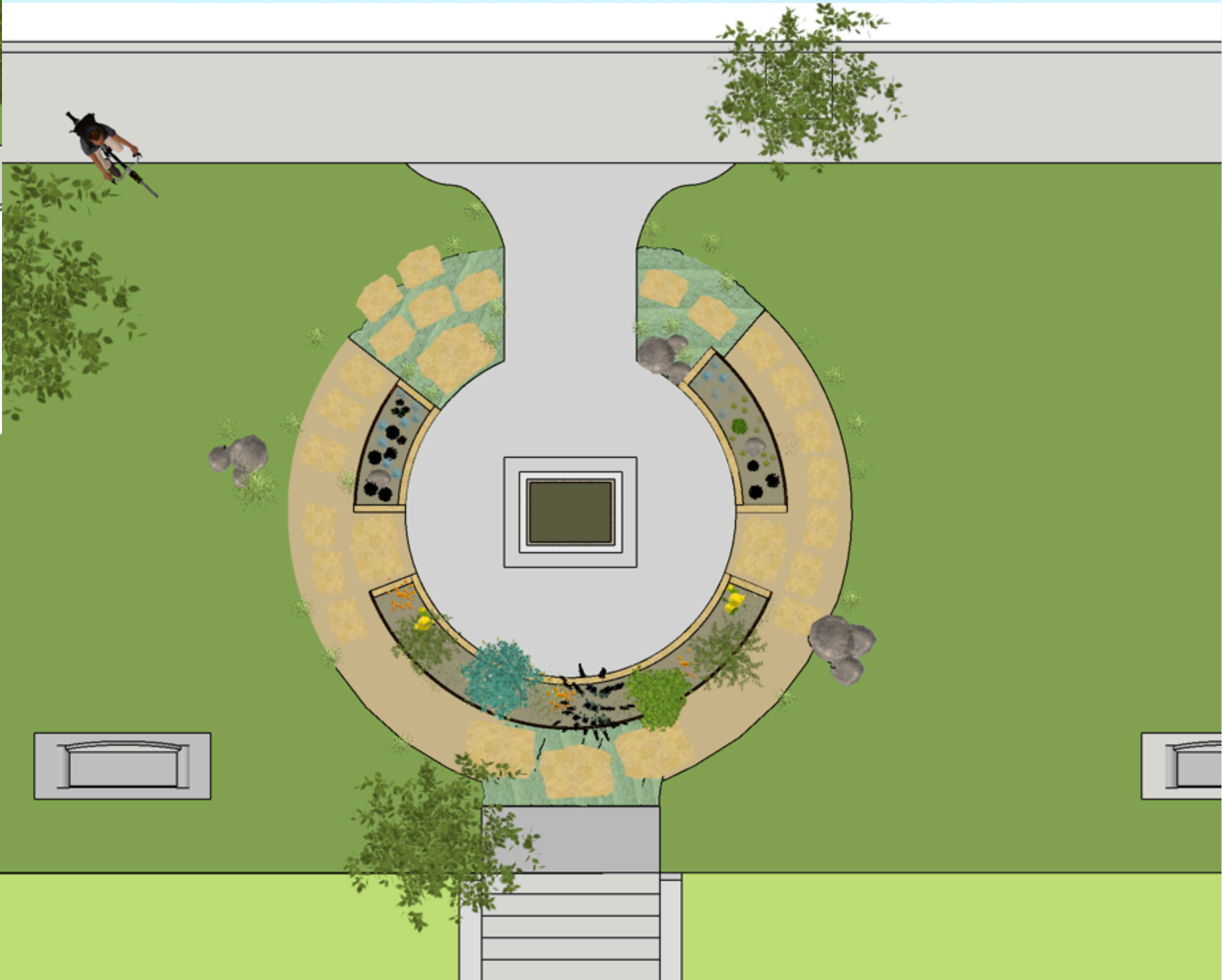
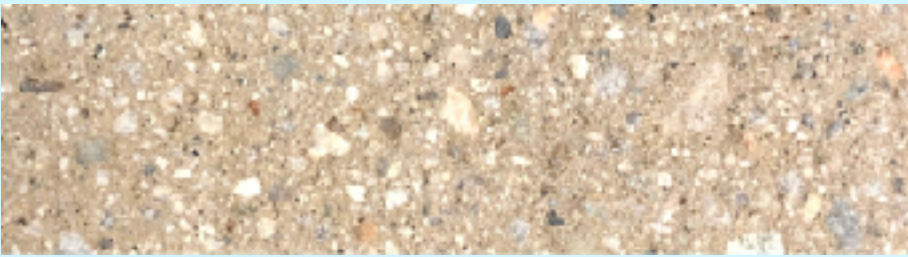
Flagstones set in D.G.

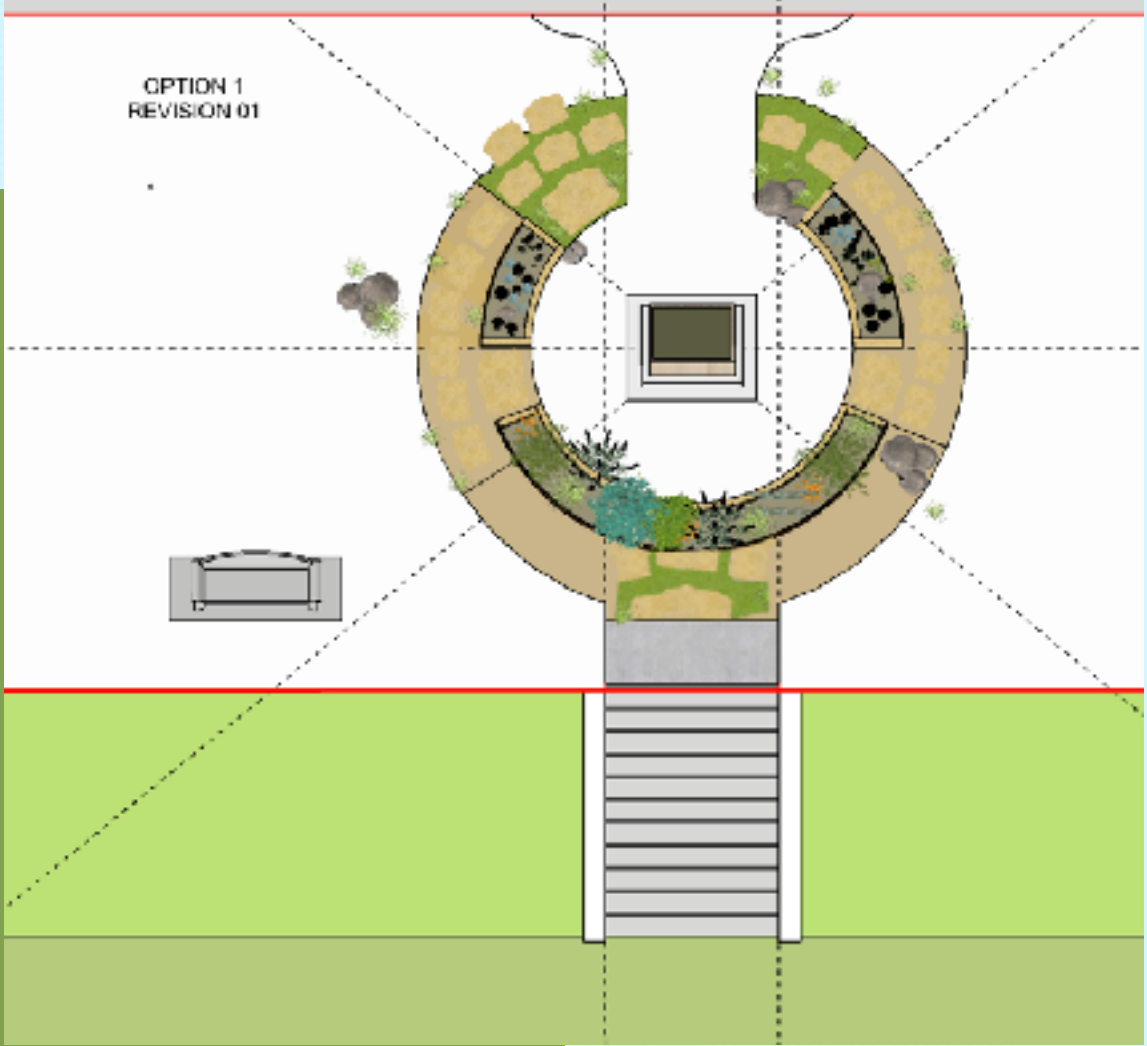
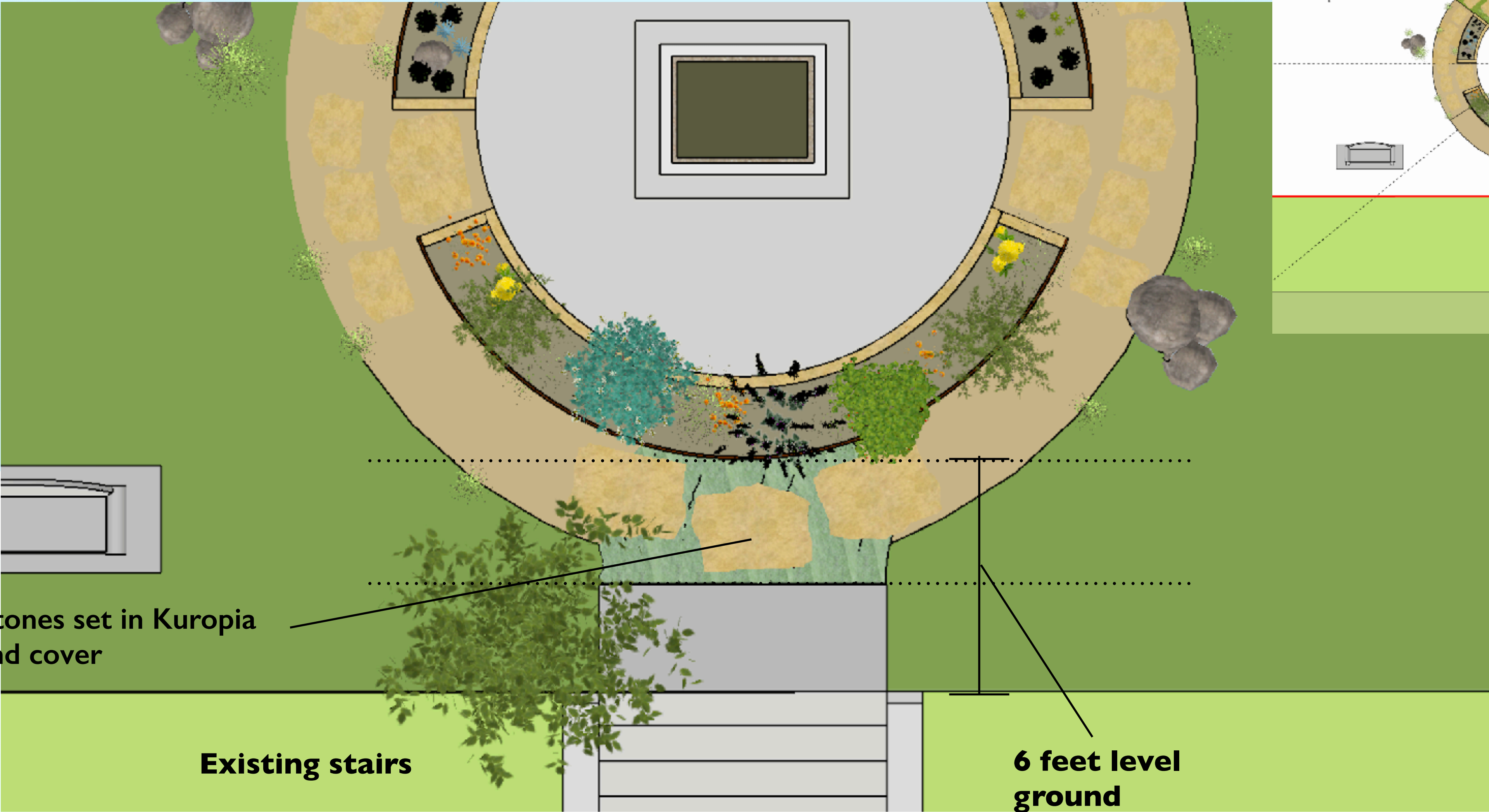
Flagstones set in Kuropia
ground cover





South West Top View

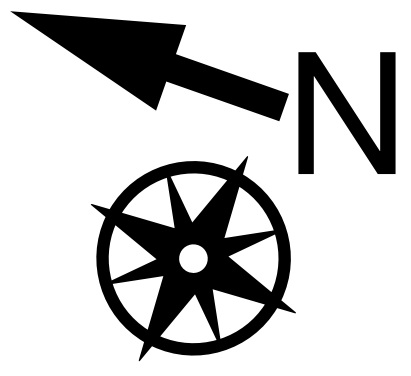




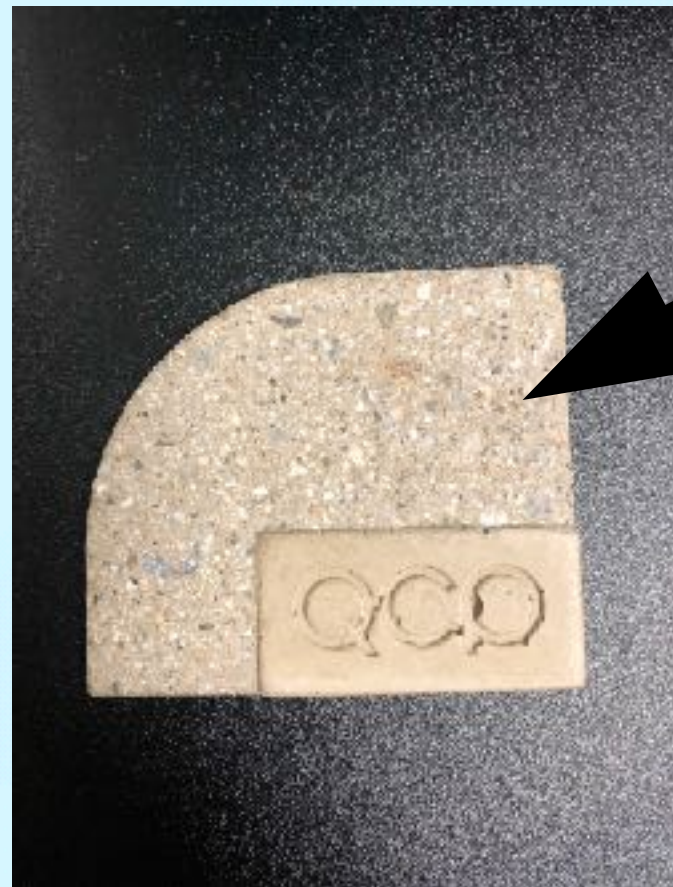
Flagstones set in Kuropia
ground cover

Existing stairs

6 feet level
ground



Hardscape Elements



Complement plaque material - bring warmth to the site and beachy tones



Weathered concrete treatment for warmth and texture



Flagstone set in Decomposed Granite or Lawn



Stacked stone to 1' high set adjacent to concrete



Corten steel set to 6" - 8" high set in lawn or DG - pro grade material - great color



Seat and Accent Boulders

Plants - Seaside Species

- Low Water CA Native and drought tolerant species
- Attract pollinators
- Low Maintenance
- Beautiful, interesting all seasons

<u>BOTANICAL NAME</u>	<u>COMMON NAME</u>
ACHILLEA 'MOONSHINE'	MOONSHINE YARROW
CAMISSONIOPSIS CHERANTHIFOLIA	BEACH PRIMROSE
ERIGERON GLAUCUS 'BOUNTIFUL'	SEASIDE DAISY
ERIOGONUM PARVIFOLIUM	COAST BUCKWHEAT
ERIOGONUM 'GRANDE RUBESCENS'	RED BUCKWHEAT
GAMBELLIA SPECIOSA	ISLAND SNAPDRAGON
SALVIA 'BONBON'	BONBON DWARF SAGE
EPILOBIUM CANUM	CALIF FUCHSIA
ISOMERIS ARBOREA	BLADDERPOD
- KUROIPIA IN FLATS - QTY TBD	
- CALIF POPPY - SUBJECT TO AVAILABILITY - MBBG TO SOURCE	
- NATIVE GRASSES: CAREX PRAEGRACILIS 'CHISAI'	



Bonbon Sage



Sage with CA Poppy



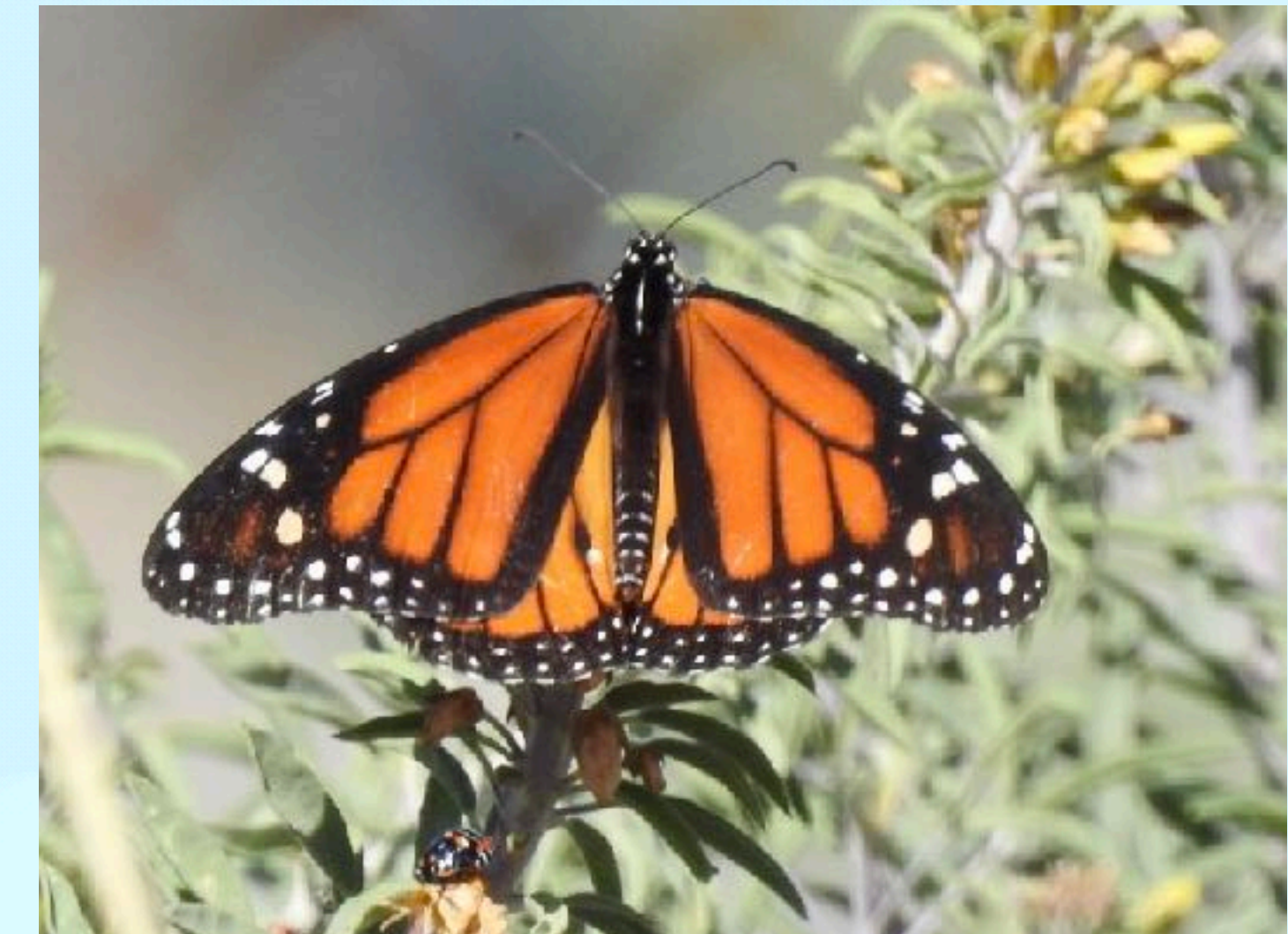
Moonshine Yarrow



Catalina Is. Snapdragon

Plants - For Pollinators

- Low Water native and drought tol species
- Attract pollinators
- Low Maintenance
- Beautiful, interesting all seasons



Native Dune Species for
Blue Marine Butterflies



Plants - All Year Color

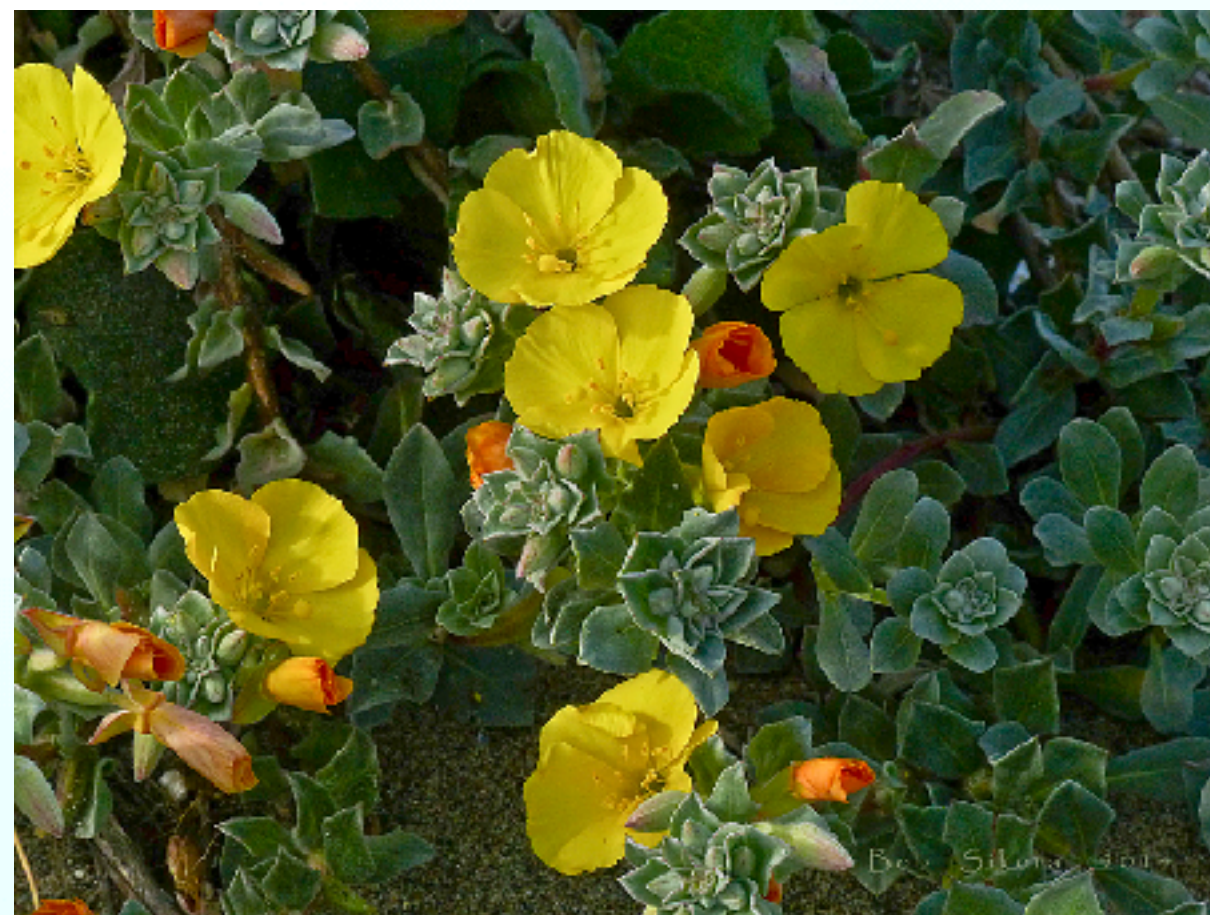
- Low Water native and drought tol species
- Attract pollinators
- Low Maintenance
- Beautiful, interesting all seasons



Dune Sedge



Bladderpod



Beach Primrose



Grande Rubescens Red Buckwheat



CA Poppy



Kuropia drought tolerant ground cover

**Plants -
Ground Cover**



Native Gardens

- Educational
- Community Focused
- Sustainable
- Healing



Lessons Learned from the Manhattan Beach Botanical Garden

