

Polliwog Pavilion Concept – Library/Local History Facility

March 7, 2023



Note: This PowerPoint presentation is intended solely as a visual aid to an oral staff presentation of an agenda report topic. In the event of any differences between the presentation and the agenda report, the information in the agenda report prevails.

Existing Facilities



Manhattan Beach Library



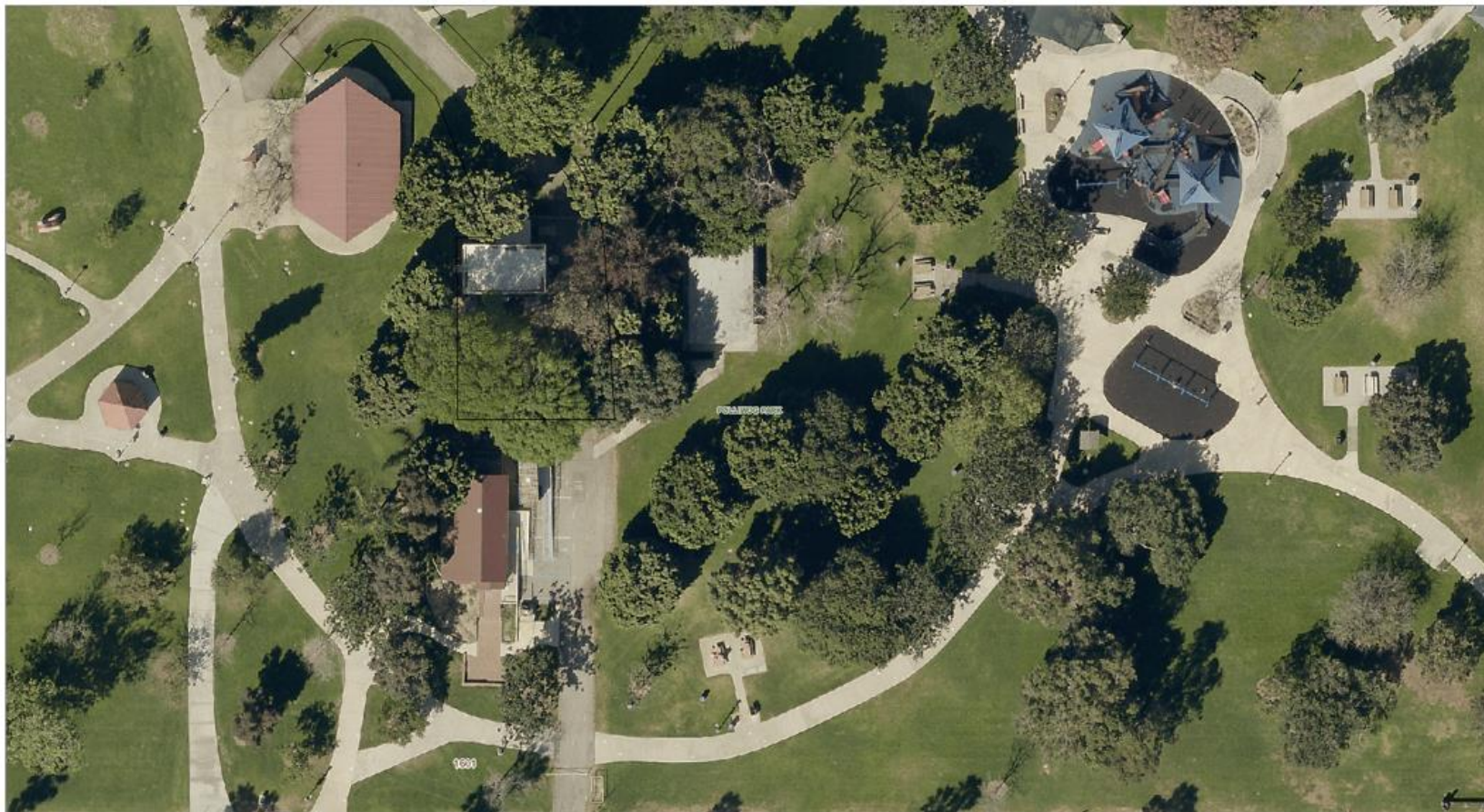
Red House



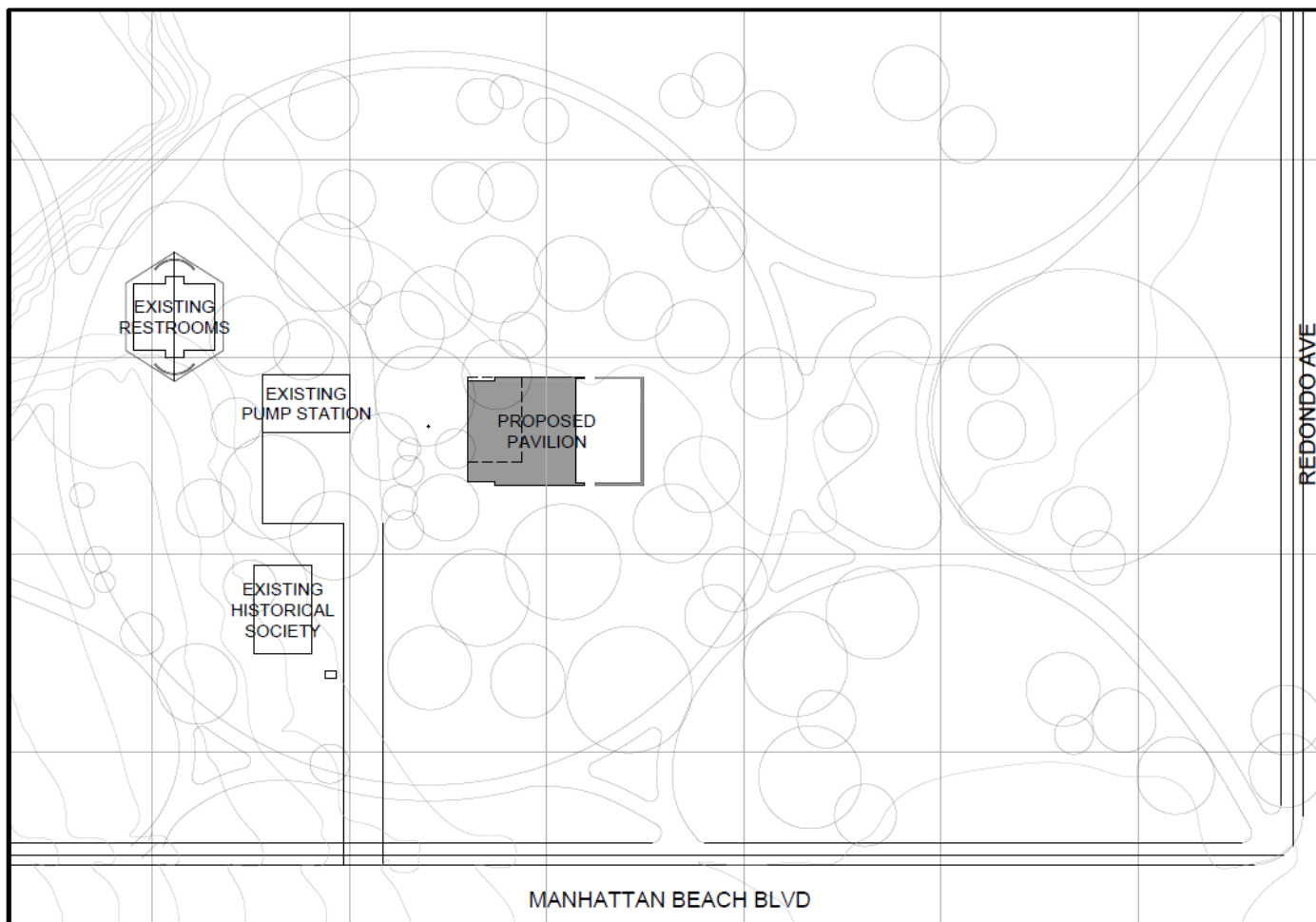
Polliwog Park – Existing Site Photo



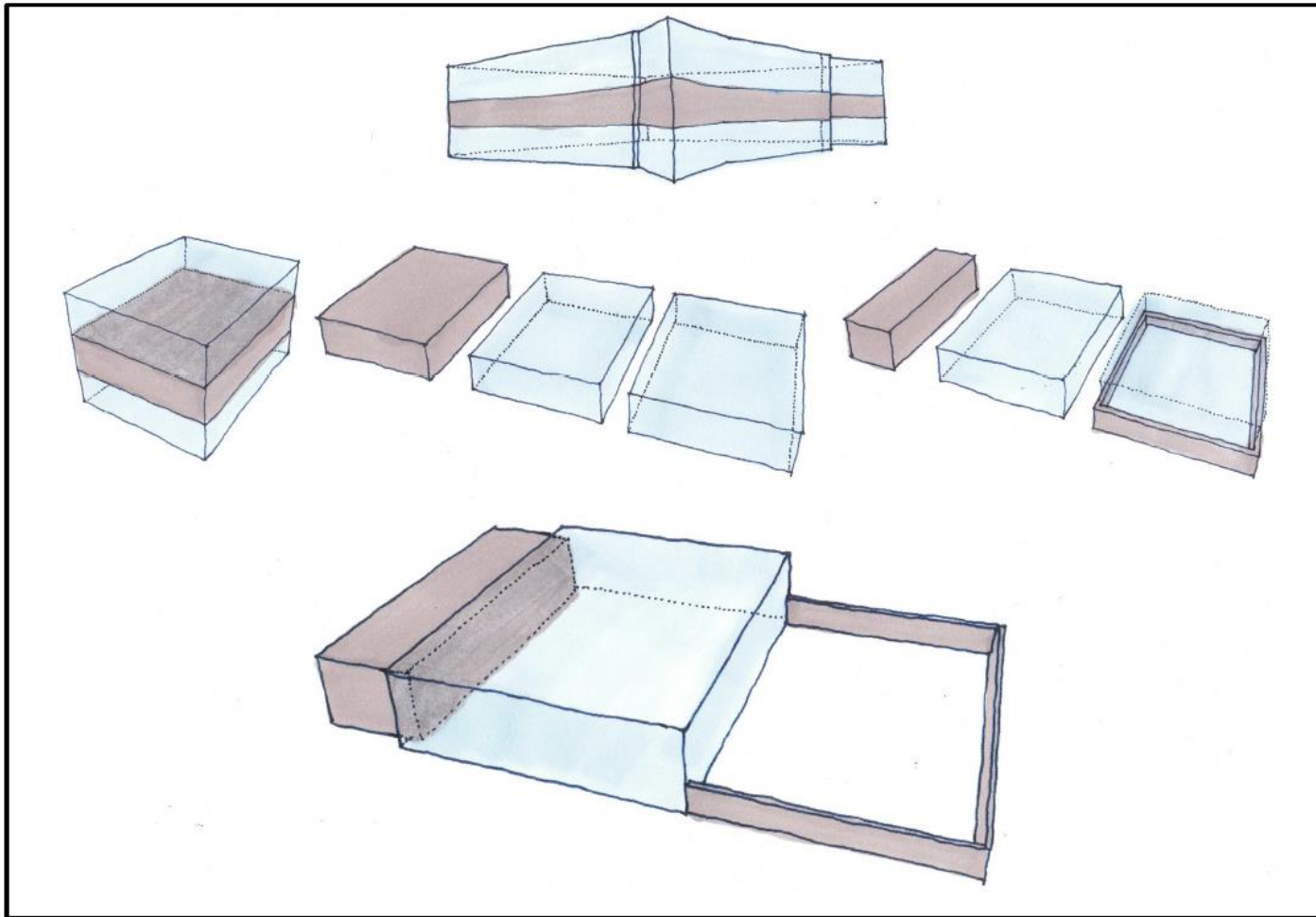
Polliwog Park – Existing Site Photo #2



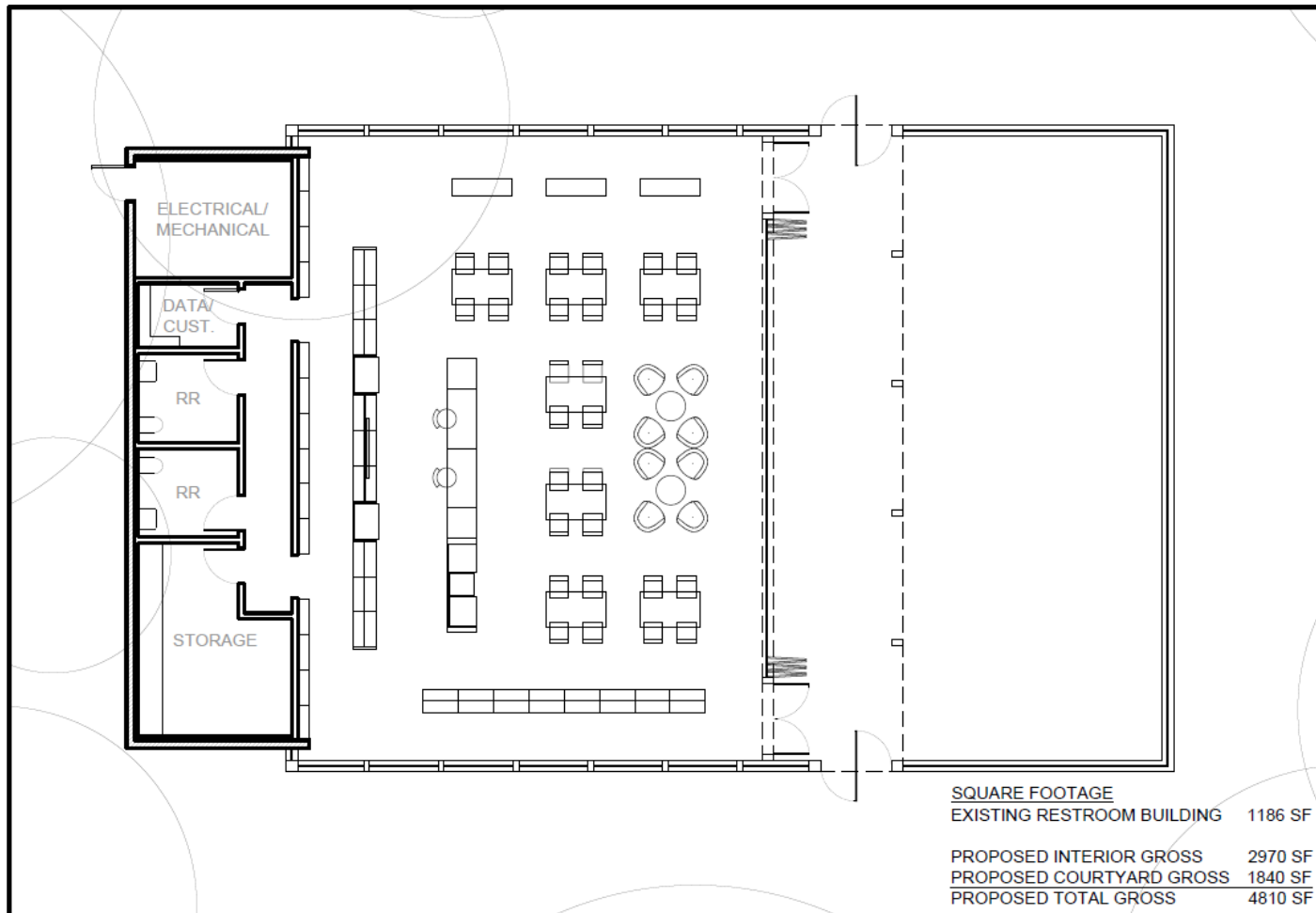
Polliwog Park – Proposed Site



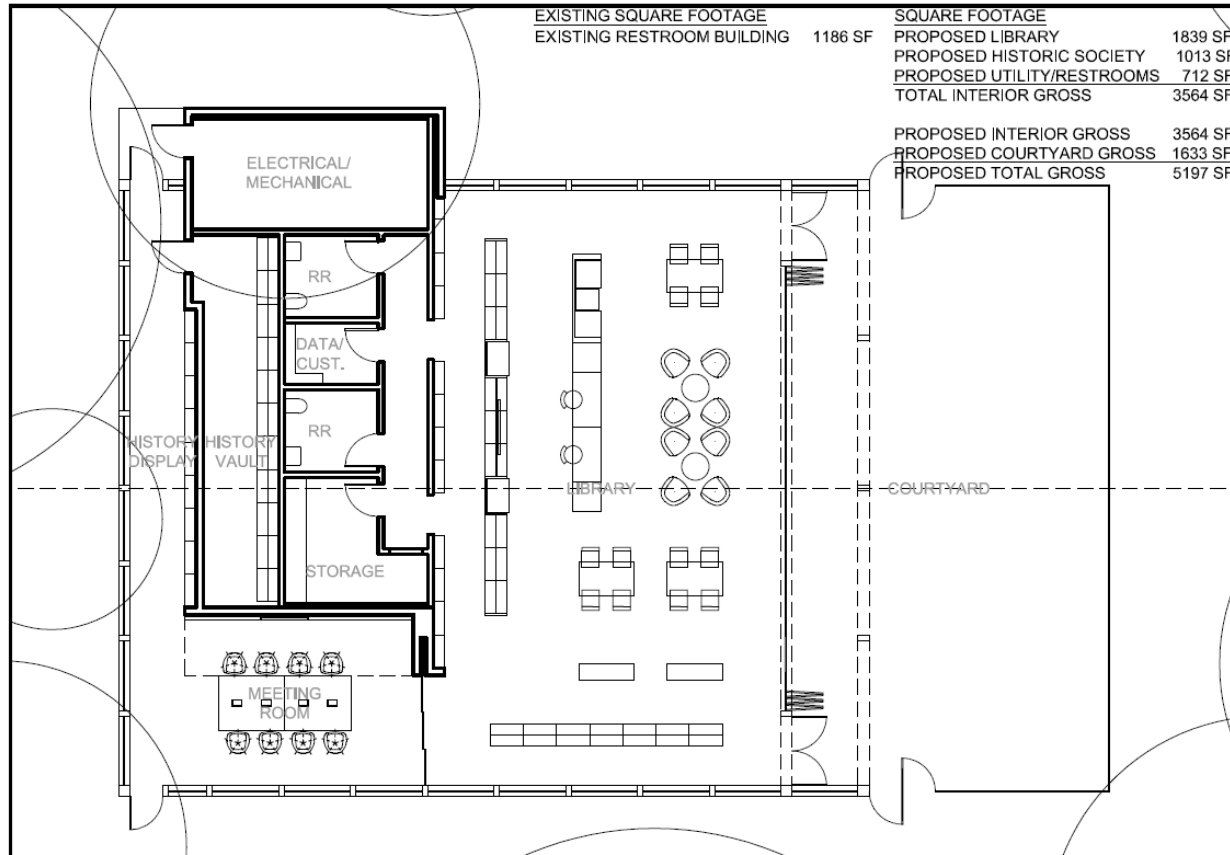
Polliwog Pavilion – Diagram



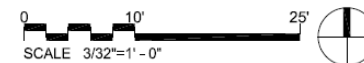
Polliwog Pavilion – Proposed Plan #1



Polliwog Pavilion – Proposed Plan #2



POLLIWOG PAVILION - LIBRARY, HISTORY & RECREATION
PROPOSED PLAN - MEETING ROOM, HISTORY DISPLAY AND VAULT
 1601 MANHATTAN BEACH BLVD, MANHATTAN BEACH, CA 90266



Project Highlights

LA COUNTY LIBRARY SURPLUS: \$9.5 MILLION

LIBRARY SERVICES	HISTORICAL COLLECTION
Pick up holds/return library items	Improved care/management of historical records
Browse bestsellers/children's books	Expanded staff and volunteer assistance with accessing collection
WiFi connectivity/access to technology	Digitized newspapers, photos, and select collections
Programming for all ages	Manhattan Beach Historical Society meeting and programming space
Opportunities for innovation/surprise	Temporary, permanent, and digital displays



Public Outreach

Preliminary Conversations

- Manhattan Beach Unified School District Ad Hoc Committee
- Manhattan Beach Historical Society
- Library Commission
- Cultural Arts Commission
- Parks and Recreation Commission
- Friends of the Manhattan Beach Library



Recommendation

Staff recommends that the City take the following actions:

1. Accept the Collection Policy for the City of Manhattan Beach Historical Collection
2. Direct staff to begin implementing Phases III and IV of the Action Plan for improving the care and management of the Historical Collection;
3. Direct staff to continue to develop a Polliwog Pavilion concept in partnership with the Los Angeles County Library to improve access to the Historical Collection and expand Eastside library services

