

# ASSESSMENT DIAGRAM ASSESSMENT DISTRICT No. 19-4

CITY OF MANHATTAN BEACH, COUNTY OF LOS ANGELES  
STATE OF CALIFORNIA

EXEMPT PER GOV CODE 27383 AND GOV CODE 27388.1 (a)(1)(D).

RECORDED IN THE OFFICE OF THE SUPERINTENDENT OF STREETS / CITY  
OF MANHATTAN BEACH, THIS \_\_\_\_ DAY OF

\_\_\_\_\_, 20\_\_.

\_\_\_\_\_  
SUPERINTENDENT OF STREETS / CITY ENGINEER  
CITY OF MANHATTAN BEACH

FILED IN THE OFFICE OF THE CITY CLERK OF MANHATTAN BEACH, THIS  
\_\_\_\_ DAY OF \_\_\_\_\_, 20\_\_.

AN ASSESSMENT WAS LEVIED BY THE CITY COUNCIL OF THE CITY OF  
MANHATTAN BEACH ON THE LOTS, PIECES, AND PARCELS OF LAND  
SHOWN ON THIS ASSESSMENT DIAGRAM. THE ASSESSMENT WAS  
LEVIED ON THE \_\_\_\_ DAY OF \_\_\_\_\_, 20\_\_; SAID ASSESSMENT  
DIAGRAM AND THE ASSESSMENT ROLL WERE RECORDED IN THE  
OFFICE OF THE SUPERINTENDENT OF STREETS OF THAT CITY ON THE  
\_\_\_\_ DAY OF \_\_\_\_\_. REFERENCE IS MADE TO THE ASSESSMENT  
ROLL RECORDED IN THE OFFICE OF THE SUPERINTENDENT OF STREETS  
/ CITY ENGINEER FOR THE EXACT AMOUNT OF EACH ASSESSMENT  
LEVIED AGAINST EACH PARCEL OF LAND SHOWN ON THIS ASSESSMENT  
DIAGRAM.

\_\_\_\_\_  
CITY CLERK  
CITY OF MANHATTAN BEACH

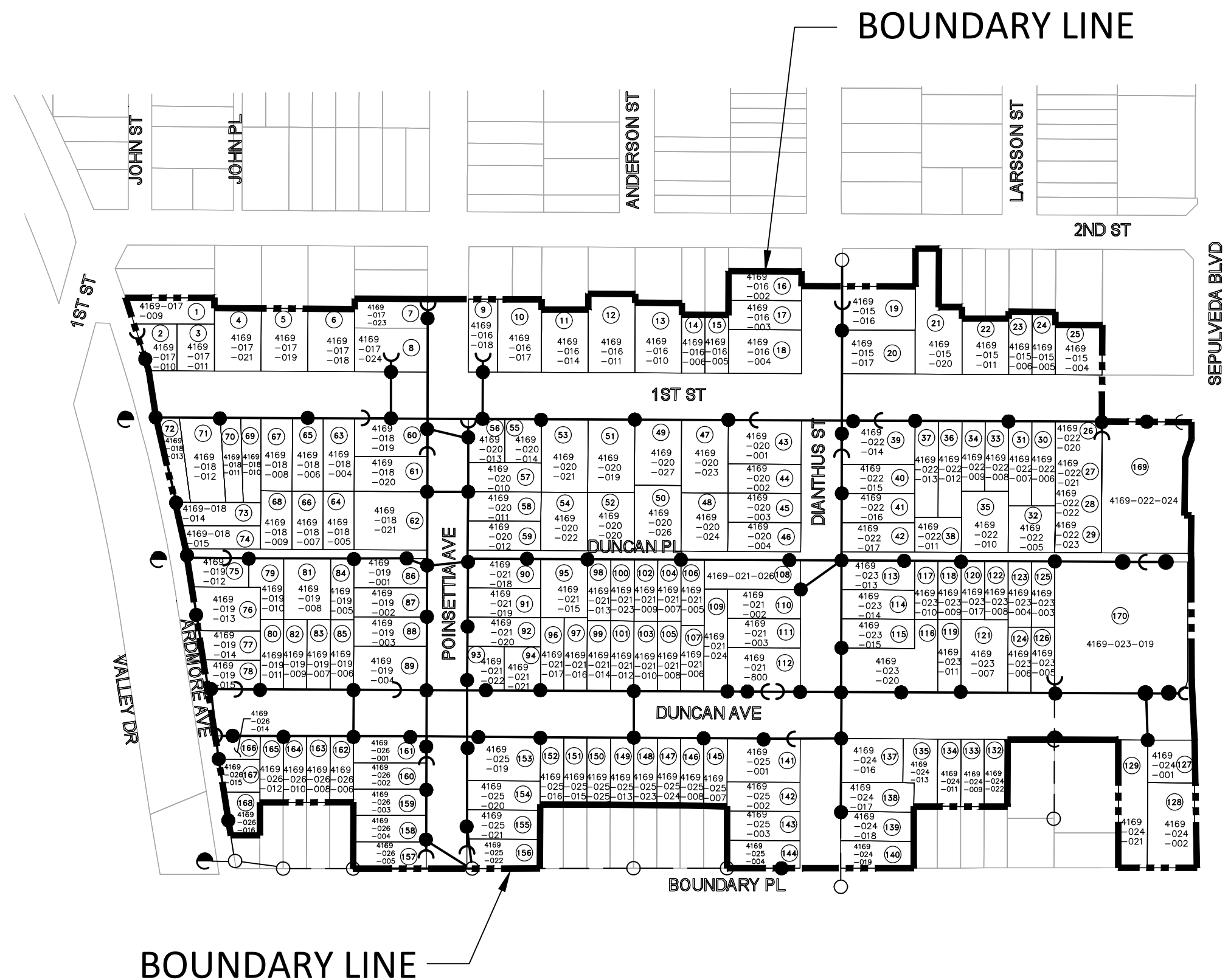
FILED THIS \_\_\_\_ DAY OF \_\_\_\_\_, 20\_\_, AT THE HOUR OF \_\_\_\_  
O'CLOCK \_\_\_\_ M. IN BOOK \_\_\_\_ OF MAPS OF ASSESSMENT AND  
COMMUNITY FACILITIES DISTRICTS AT PAGE \_\_\_\_\_, IN THE OFFICE OF  
THE COUNTY RECORDER OF THE COUNTY OF LOS ANGELES, STATE OF  
CALIFORNIA.

EXEMPT RECORDING PER GOVERNMENT CODE 610 3

FEE: \_\_\_\_\_ INST. NO. \_\_\_\_\_

\_\_\_\_\_  
BY DEPUTY  
COUNTY CLERK-RECORDER OF COUNTY OF LOS ANGELES  
DEAN C. LOGAN, CLERK-RECORDER

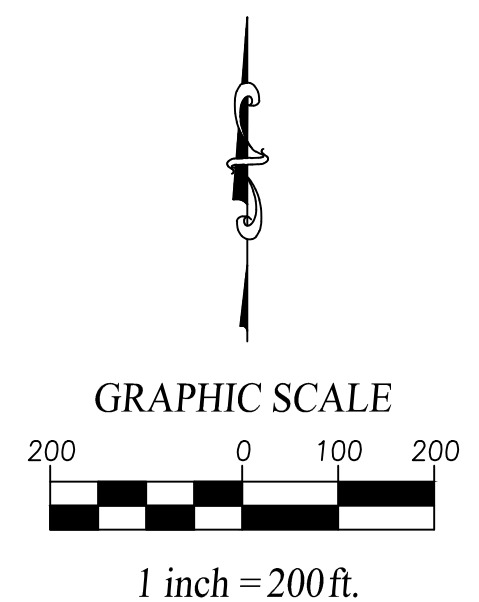
NOTE: FOR PARTICULARS OF THE LINES AND DIMENSIONS OF  
ASSESSOR'S PARCELS, REFERENCE IS MADE TO THE MAPS OF THE  
ORANGE COUNTY ASSESSOR, WHICH MAPS SHALL GOVERN FOR ALL  
DETAILS RELATING THERETO.



BOUNDARY LINE

**LEGEND**

- POWER POLE TO BE REMOVED
- GUY WIRE TO BE REMOVED
- POWER POLE TO REMAIN IN PLACE
- GUY WIRE TO REMAIN IN PLACE
- NEW RISER POLE
- OVERHEAD UTILITY GUY WIRE TO REMAIN
- POWER LINE TO BE REMOVED
- POWER LINE TO REMAIN
- ASSESSMENT DISTRICT AREA BOUNDARY
- ON-SITE PARCEL
- OFF-SITE PARCELS
- ⊗ ASSESSMENT NO. PARCELS: 167
- DISTANCE: 10,220 LF
- POWER POLES TO BE REMOVED: 82



# ASSESSMENT DIAGRAM ASSESSMENT

## DISTRICT No. 19-4

CITY OF MANHATTAN BEACH, COUNTY OF LOS ANGELES  
STATE OF CALIFORNIA

Asmt No.	APN
1	4169-017-009
2	4169-017-010
3	4169-017-011
4	4169-017-021
5	4169-017-019
6	4169-017-018
7	4169-017-023
8	4169-017-024
9	4169-016-018
10	4169-016-017
11	4169-016-014
12	4169-016-011
13	4169-016-010
14	4169-016-006
15	4169-016-005
16	4169-016-002
17	4169-016-003
18	4169-016-004
19	4169-015-016
20	4169-015-017
21	4169-015-020
22	4169-015-011
23	4169-015-006
24	4169-015-005
25	4169-015-004
26	4169-022-020
27	4169-022-021
28	4169-022-022
29	4169-022-023
30	4169-022-006
31	4169-022-007
32	4169-022-005
33	4169-022-008
34	4169-022-009
35	4169-022-010
36	4169-022-012
37	4169-022-013
38	4169-022-011
39	4169-022-014
40	4169-022-015

Asmt No.	APN
41	4169-022-016
42	4169-022-017
43	4169-020-001
44	4169-020-002
45	4169-020-003
46	4169-020-004
47	4169-020-023
48	4169-020-024
49	4169-020-027
50	4169-020-026
51	4169-020-019
52	4169-020-020
53	4169-020-021
54	4169-020-022
55	4169-020-014
56	4169-020-013
57	4169-020-010
58	4169-020-011
59	4169-020-012
60	4169-018-019
61	4169-018-020
62	4169-018-021
63	4169-018-004
64	4169-018-005
65	4169-018-006
66	4169-018-007
67	4169-018-008
68	4169-018-009
69	4169-018-010
70	4169-018-011
71	4169-018-012
72	4169-018-013
73	4169-018-014
74	4169-018-015
75	4169-019-012
76	4169-019-013
77	4169-019-014
78	4169-019-015
79	4169-019-010
80	4169-019-011

Asmt No.	APN
81	4169-019-008
82	4169-019-009
83	4169-019-007
84	4169-019-005
85	4169-019-006
86	4169-019-001
87	4169-019-002
88	4169-019-003
89	4169-019-004
90	4169-021-018
91	4169-021-019
92	4169-021-020
93	4169-021-022
94	4169-021-021
95	4169-021-015
96	4169-021-017
97	4169-021-016
98	4169-021-013
99	4169-021-014
100	4169-021-023
101	4169-021-012
102	4169-021-009
103	4169-021-010
104	4169-021-007
105	4169-021-008
106	4169-021-005
107	4169-021-006
108	4169-021-026
109	4169-021-024
110	4169-021-002
111	4169-021-003
112	4169-021-800
113	4169-023-013
114	4169-023-014
115	4169-023-015
116	4169-023-020
117	4169-023-010
118	4169-023-009
119	4169-023-011
120	4169-023-017

Asmt No.	APN
121	4169-023-007
122	4169-023-008
123	4169-023-004
124	4169-023-006
125	4169-023-003
126	4169-023-005
127	4169-024-001
128	4169-024-002
129	4169-024-021
130	Not Used
131	Not Used
132	4169-024-022
133	4169-024-009
134	4169-024-011
135	4169-024-013
136	Not Used
137	4169-024-016
138	4169-024-017
139	4169-024-018
140	4169-024-019
141	4169-025-001
142	4169-025-002
143	4169-025-003
144	4169-025-004
145	4169-025-007
146	4169-025-008
147	4169-025-024
148	4169-025-023
149	4169-025-013
150	4169-025-025
151	4169-025-015
152	4169-025-016
153	4169-025-019
154	4169-025-020
155	4169-025-021
156	4169-025-022
157	4169-026-005
158	4169-026-004
159	4169-026-003
160	4169-026-002

Asmt No.	APN
161	4169-026-001
162	4169-026-006
163	4169-026-008
164	4169-026-010
165	4169-026-012
166	4169-026-014
167	4169-026-015
168	4169-026-016
169	4169-022-024
170	4169-023-019