



City of Manhattan Beach  
Community Development  
Traffic Engineering Division

## Attachment 5 Existing and Proposed Valet Locations 2016 Downtown Manhattan Beach



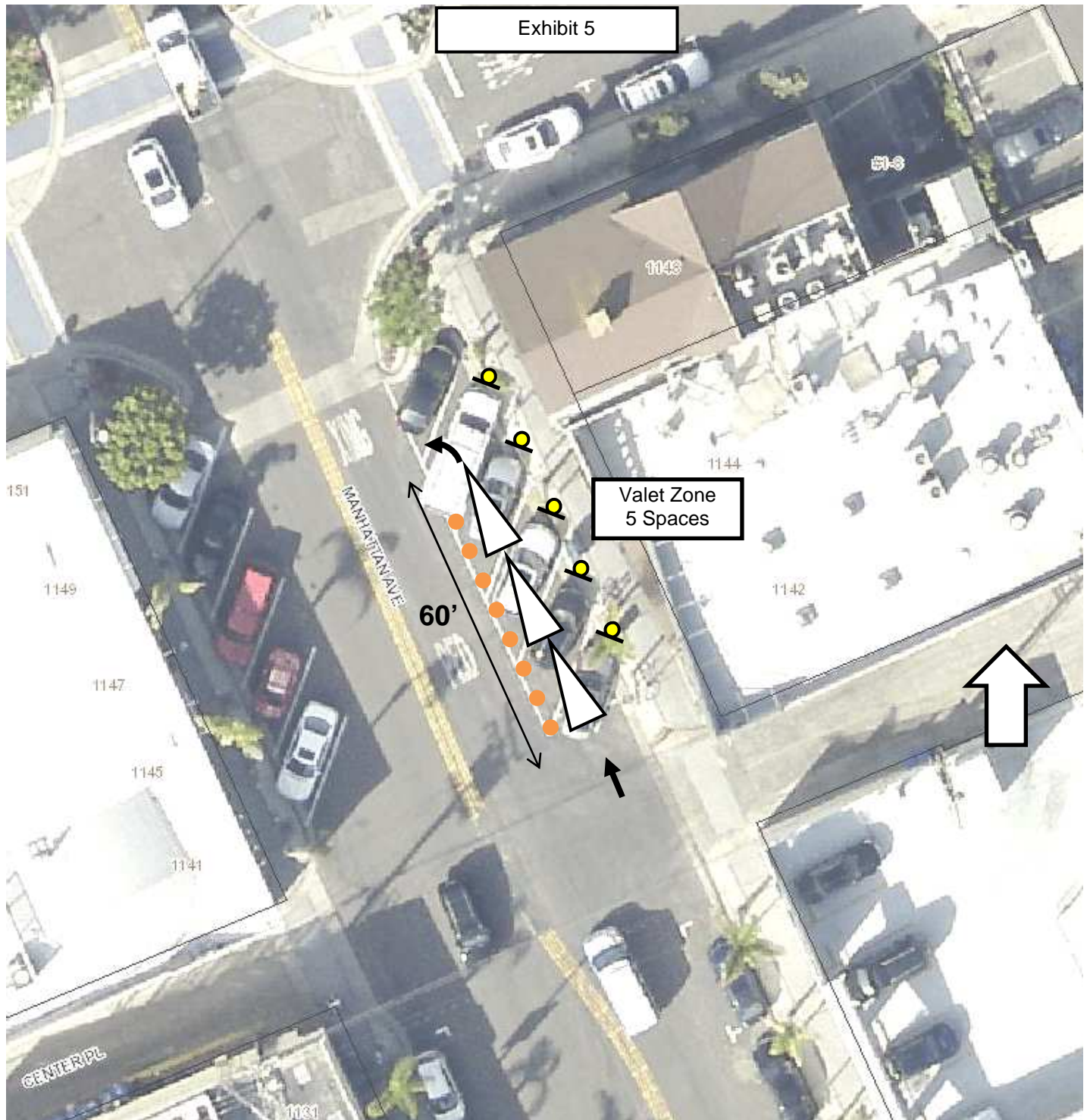
Exhibit 5



City of Manhattan Beach  
Community Development  
Traffic Engineering Division

Existing Valet Loading Zone  
Manhattan Avenue  
Between 10<sup>th</sup> Place and 11<sup>th</sup> Street

Exhibit 5



City of Manhattan Beach  
Community Development  
Traffic Engineering Division

Existing Valet Loading Zone  
Manhattan Avenue  
Between Center Place and 12<sup>th</sup> Street



Exhibit 5



City of Manhattan Beach  
Community Development  
Traffic Engineering Division

Proposed Valet Loading Zone  
Manhattan Avenue  
Between 9<sup>th</sup> Street and 9<sup>th</sup> Place