

Environmental Work Plan 2018-2020

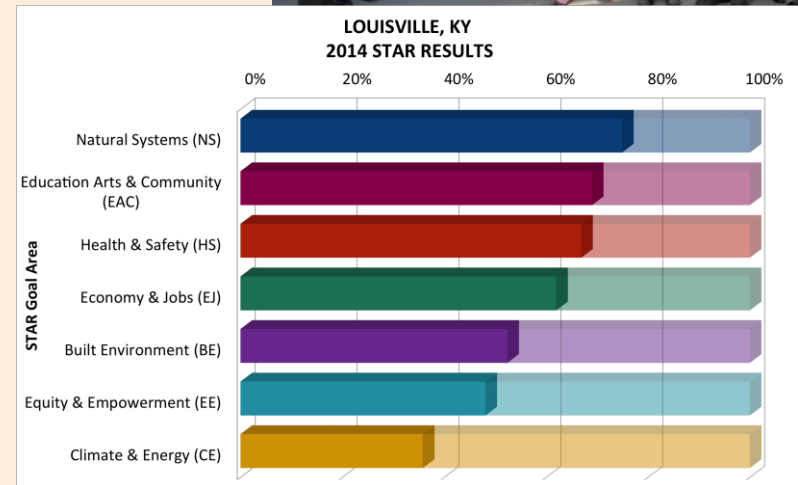
Dana Murray
Environmental Programs Manager



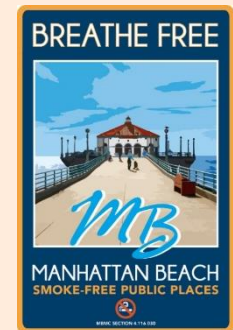
MANHATTAN BEACH'S 2018-2020

LONG-TERM SUSTAINABILITY PLANNING GOALS

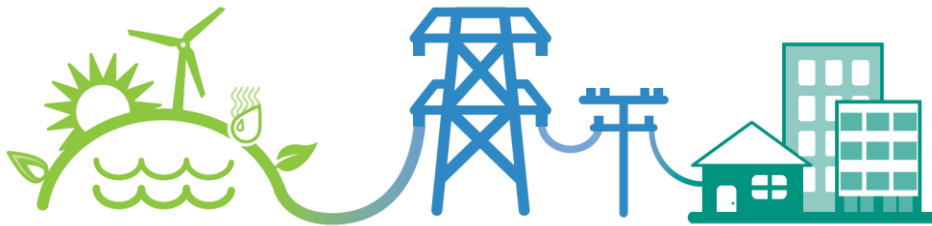
1. Form an Environmental Task Force
2. Assess and describe the City's last 10 years of Environmental Achievements
3. Increase the City's Accountability by Utilizing a Sustainability Reporting Tool
4. Develop the City's Environmental Sustainability Plan, for Adoption into the City's General Plan
5. Create the City's Community and Municipal Climate Action Plan
6. Identify Priority Areas for Environmental Action and Form Task Force Sub-committees



TOPIC	PRIORITY ACTIONS		
POLLUTION PREVENTION POLICY	Explore new plastic pollution reduction initiatives: Straws-upon-request policy, reducing use of plastic utensils, etc.	Education & Outreach on existing City policies and programs	Conduct Business Outreach: Green Business Program, SEED Awards, Business Associations



TOPIC	PRIORITY ACTIONS		
CLIMATE CHANGE & ENERGY	Consider Joining a Community Choice Aggregation (CCA): enable our city's electrical customers to purchase electricity from a higher percentage of renewable energy sources	Implement Actions Associated with Climate Compact of Mayors & Paris Climate Agreement	Consider a City Electric Vehicle Policy: Policy to support EVs in the community; clarify City policy on charging for EV parking/electricity; signage; acquisition of EVs to the City fleet



RENEWABLE ENERGY
Electric Generation

SAME SERVICE AS ALWAYS
Electric Delivery

YOUR COMMUNITY
A Greener Electricity

CALIFORNIA LOCAL LEADERSHIP



SAN FRANCISCO	LOS ANGELES	SAN DIEGO	SONOMA
 <ul style="list-style-type: none"> Comprehensive plan to upgrade, and expand, hundreds of public charging sites. Innovative solutions for curbside charging and charging at Multi-unit Dwellings. Battery switching demonstration program with PEV taxicab fleet. City Department Workshops to encourage city-wide PEV adoption. 	 <ul style="list-style-type: none"> Goal: 7-day permitting, inspection and approval process for home PEV charging installations. Moved permitting online. Incentives of up to \$2,000 per household for charging installation. Free PEV parking at Los Angeles International Airport. Building code amendments to require PEV charging in new construction. 	 <ul style="list-style-type: none"> U.S. D.O.E. EV Project award – ECOTality, Nissan, and SDG&E partnership will place hundreds of public access stations, including some DC Fast Charging. First all-electric car sharing program in North America. Smart City San Diego consortium will foster greater PEV public charging. SDG&E leadership in Multi-unit Dwelling charging outreach, options. 	 <ul style="list-style-type: none"> Adopted PEV Charging Station Program and Installation Guidelines, 2011. Installed over 40 public and fleet PEV charging stations; aiming for total of 130 stations in 2012. Obtained funding for over 30 PEVs and chargers. PEVs, along with hybrid electric vehicles, comprise 30% of County's fleet.



TOPIC

PRIORITY ACTIONS

CLIMATE RESILIENCY

Form a Sea Level Rise Planning Team & Explore Financing: Research planning methodologies, including state funding (LCP grants) and local partnerships to pursue coastal resiliency projects. Work with CA State Lands Commission and Coastal Commission staff, as well as local and regional partners

Complete a Sea Level Rise Vulnerability Assessment: Use best available science and cutting-edge sea level rise models (such as CoSMoS) to assess the City's physical, societal, economic, and ecosystem vulnerability to help assess and adapt to climate change

Update the City's Local Coastal Plan: Incorporate sea level rise planning and a vulnerability assessment into the City's LCP. Establish regular coordination and work together with Coastal Commission staff in the steps of the LCP planning process

California coast ocean level could rise 10 feet in 70 years

Addressing sea-level rise would cost a staggering amount of public and private money

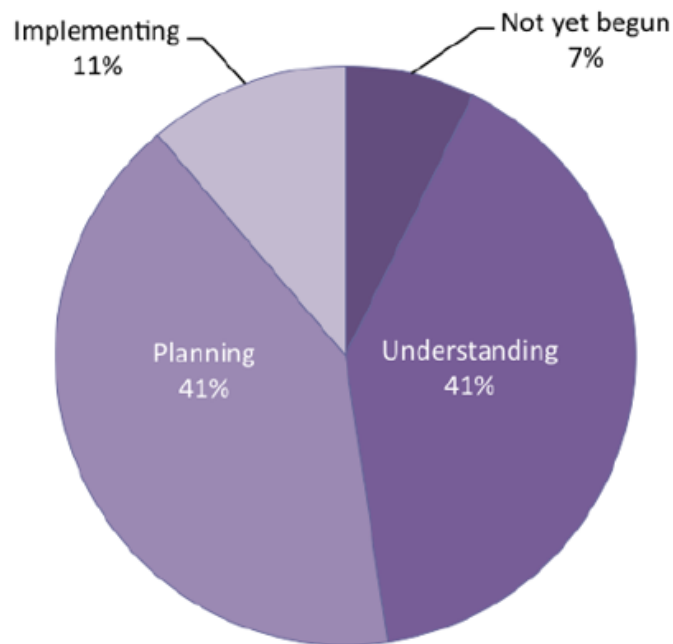


Huge waves batter the coast on Beach Boulevard in Pacifica on Jan. 23, 2016. (John Green /San Jose Mercury News, File)

By JULIE CART, CALMATTERS |
PUBLISHED: April 30, 2017 at 6:55 am | UPDATED: April 30, 2017 at 1:31 pm

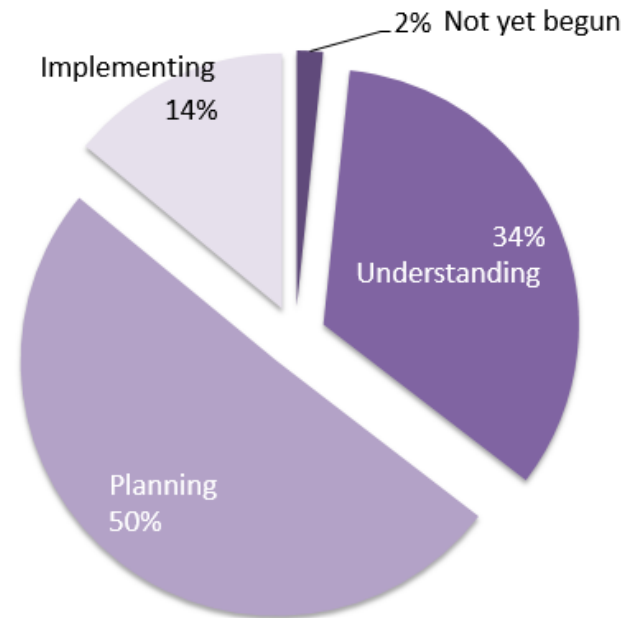


Where are local jurisdictions in the adaptation planning & decision-making cycle?



2011

Sea Grant
University of Southern California



2016



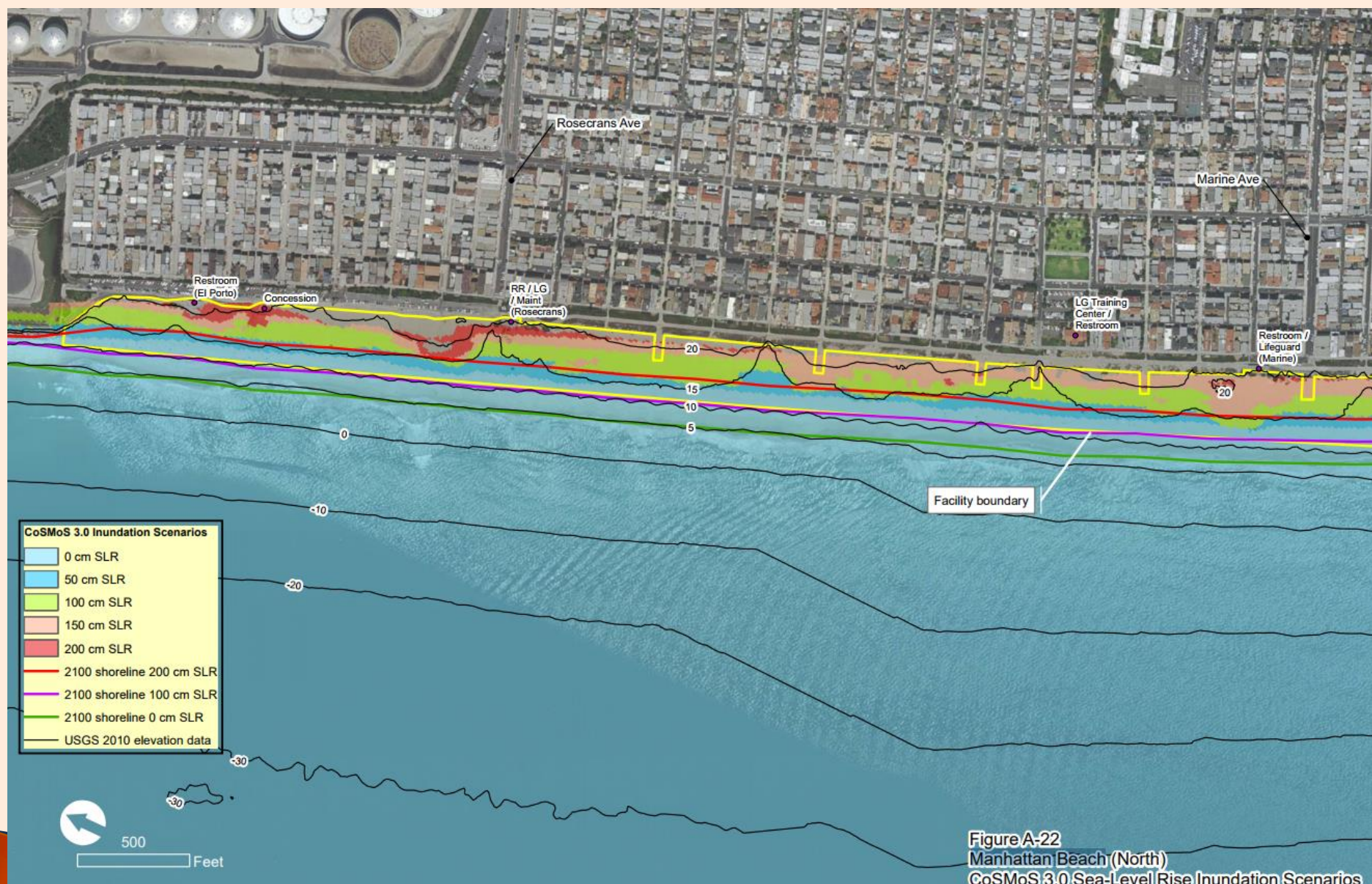


Figure A-22
 Manhattan Beach (North)
 CoSMoS 3.0 Sea-Level Rise Inundation Scenarios



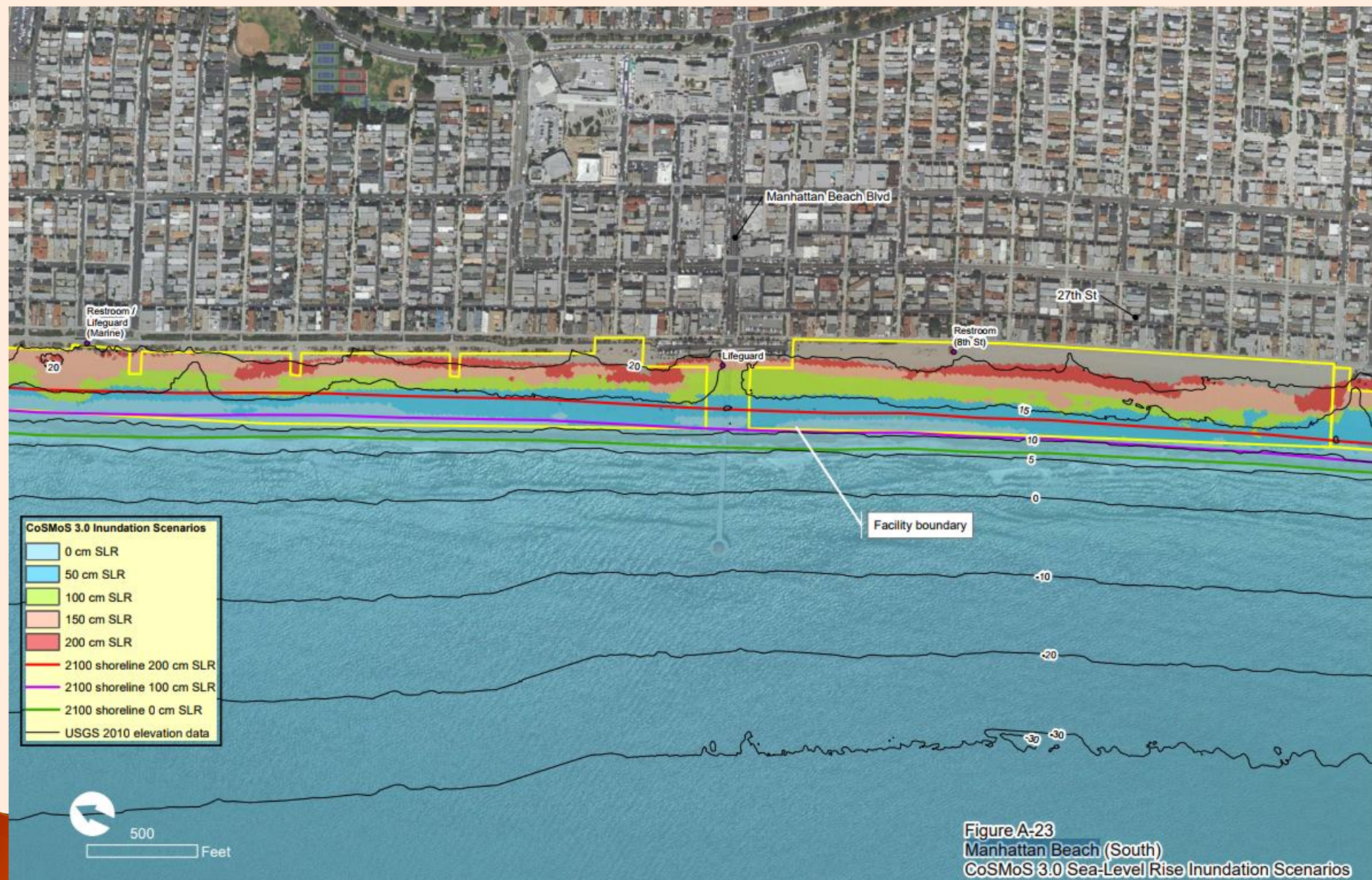


Figure A-23
Manhattan Beach (South)
CoSMoS 3.0 Sea-Level Rise Inundation Scenarios



Water-Related Infrastructure



- >90% impermeable surface
- Back-up of runoff during heavy rainfall events
- More street flooding
- Recent stormwater system overhaul very helpful
- Sewage system deficient, need for rehab already recognized
- Additional challenges from saltwater intrusion, corrosion



Water-Related Infrastructure



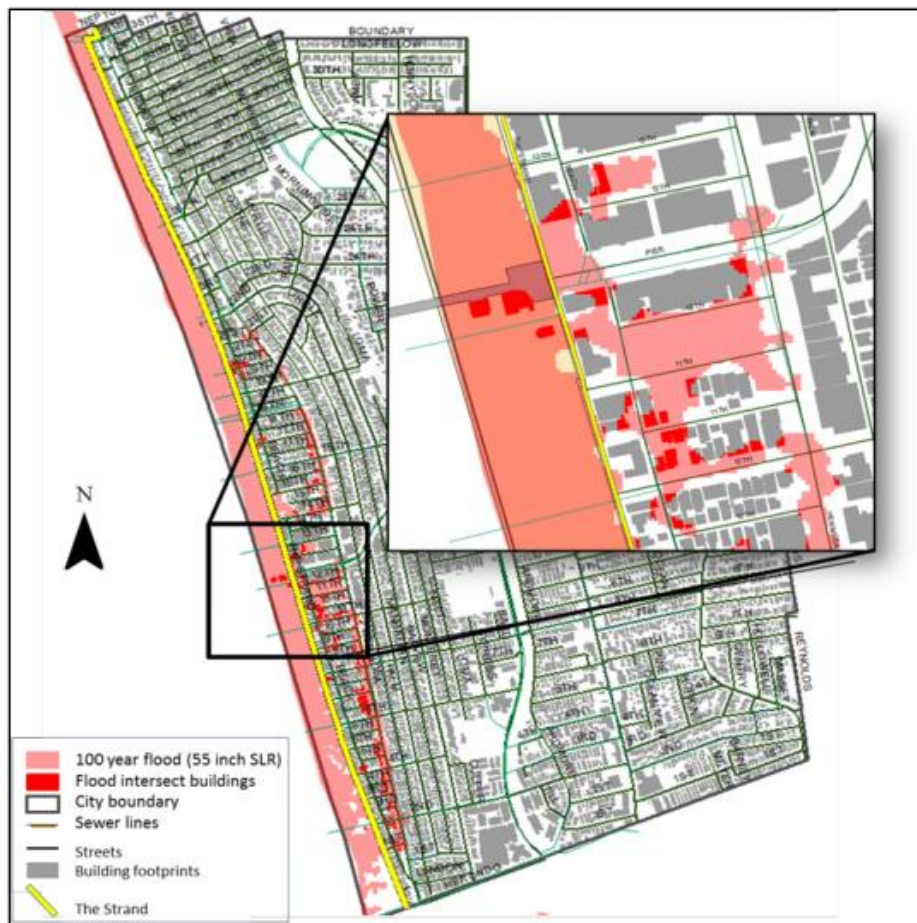
Structural Vulnerabilities

- 202 buildings exposed, incl.
 - 143 residential buildings
 - a church parking lot (at 1540 Hermosa Avenue)
 - 13 government owned buildings
- Replacement value of buildings and contents (Hazus database)
 - \$35 million (in 2000\$)
- Not incl. growth, infill, value change



Water-Related Infrastructure

Structural Vulnerabilities Buildings at Risk



Source: Ekstrom & Moser (2014)

d, incl.
dings
:(at
ue)
ned

of
nts

(\$)
fill,



TOPIC	PRIORITY ACTIONS		
SMART WATER MANAGEMENT	Conduct Community Outreach & Education: focus on water conservation and drought-tolerant gardens	Explore City Stormwater Capture & Recycled Water Use: Pursue Future Smart Water Management actions including stormwater capture, recycled water, and increased infiltration in the City.	Consider Smart Water Policies: Pursue policy updates on City low-impact ordinances, green building practices/building sustainability checklist



TOPIC	PRIORITY ACTIONS		
<p>COMMUNITY PARTNERSHIPS & OUTREACH</p>	<p>Contribute to City's Sustainability Digital Presence & Outreach: City's Sustainability Webpages; Social Media Outreach; Environmental Awareness, Education, and Action Opportunities in the City and South Bay</p>	<p>Build relationships and information sharing through Community Engagement and Partnerships</p>	<p>Increase City Cross-Departmental Collaboration: Identify Opportunities for City cross-departmental collaboration</p>



TOPIC	PRIORITY ACTIONS		
EMERGING ISSUES	Remain nimble to incorporate and consider action on areas of emerging concern/opportunity	Opportunities Coming Soon: Roundhouse Aquarium Environmental Education Collaboration; Beach Dune Restoration in the City	



Next Steps



Discussion & Questions



MANHATTAN BEACH'S 2018-2020

LONG-TERM SUSTAINABILITY PLANNING GOALS

1. Form an Environmental Task Force
2. Assess and describe the City's last 10 years of Environmental Achievements
3. Increase the City's Accountability by Utilizing a Sustainability Reporting Tool
4. Develop the City's Environmental Sustainability Plan, for Adoption into the City's General Plan
5. Create the City's Community and Municipal Climate Action Plan
6. Identify Priority Areas for Environmental Action and Form Task Force Sub-committees



TOPIC	PRIORITY ACTIONS		
POLLUTION PREVENTION POLICY	Explore new plastic pollution reduction initiatives: Straws-upon-request policy, reducing use of plastic utensils, etc.	Education & Outreach on existing City policies and programs	Conduct Business Outreach: Green Business Program, SEED Awards, Business Associations



TOPIC	PRIORITY ACTIONS		
CLIMATE CHANGE & ENERGY	Consider Joining a Community Choice Aggregation (CCA): enable our city's electrical customers to purchase electricity from a higher percentage of renewable energy sources	Implement Actions Associated with Climate Compact of Mayors & Paris Climate Agreement	Consider a City Electric Vehicle Policy: Policy to support EVs in the community; clarify City policy on charging for EV parking/electricity; signage; acquisition of EVs to the City fleet



TOPIC	PRIORITY ACTIONS		
CLIMATE RESILIENCY	Form a Sea Level Rise Planning Team & Explore Financing: Research planning methodologies, including state funding (LCP grants) and local partnerships to pursue coastal resiliency projects. Work with CA State Lands Commission and Coastal Commission staff, as well as local and regional partners	Complete a Sea Level Rise Vulnerability Assessment: Use best available science and cutting-edge sea level rise models (such as CoSMoS) to assess the City's physical, societal, economic, and ecosystem vulnerability to help assess and adapt to climate change	Update the City's Local Coastal Plan: Incorporate sea level rise planning and a vulnerability assessment into the City's LCP. Establish regular coordination and work together with Coastal Commission staff in the steps of the LCP planning process



TOPIC	PRIORITY ACTIONS		
SMART WATER MANAGEMENT	Conduct Community Outreach & Education: focus on water conservation and drought-tolerant gardens	Explore City Stormwater Capture & Recycled Water Use: Pursue Future Smart Water Management actions including stormwater capture, recycled water, and increased infiltration in the City.	Consider Smart Water Policies: Pursue policy updates on City low-impact ordinances, green building practices/building sustainability checklist



TOPIC	PRIORITY ACTIONS		
<p>COMMUNITY PARTNERSHIPS & OUTREACH</p>	<p>Contribute to City's Sustainability Digital Presence & Outreach: City's Sustainability Webpages; Social Media Outreach; Environmental Awareness, Education, and Action Opportunities in the City and South Bay</p>	<p>Build relationships and information sharing through Community Engagement and Partnerships</p>	<p>Increase City Cross-Departmental Collaboration: Identify Opportunities for City cross-departmental collaboration</p>



TOPIC	PRIORITY ACTIONS		
EMERGING ISSUES	Remain nimble to incorporate and consider action on areas of emerging concern/opportunity	Opportunities Coming Soon: Roundhouse Aquarium Environmental Education Collaboration; Beach Dune Restoration in the City	

