

**90 Potential Public Parking Spaces**



City of Manhattan Beach  
Community Development  
Traffic Engineering Division

**Downtown Manhattan Beach  
Additional Street Parking Opportunities  
90 Potential Public Parking Spaces**



PARKING SUPPLY

Proposed Parking	46
Existing Parking	32
Net Gain	+14
NEV Parking	



City of Manhattan Beach  
Community Development  
Traffic Engineering Division

Possible Parallel Parking  
Valley Drive  
17<sup>th</sup> Street to 18<sup>th</sup> Street





<u>PARKING SUPPLY</u>	
Proposed Parking	70
Existing Parking	49
Net Gain	+21
NEV Parking	

Modify parking stripes.



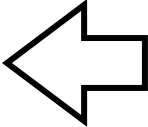
City of Manhattan Beach  
 Community Development  
 Traffic Engineering Division

Modify Diagonal Parking  
 Valley Drive  
 18<sup>th</sup> Street to 20<sup>th</sup> Place





Install diagonal parking stripes.



PARKING SUPPLY	
Proposed Parking	18
Existing Parking	<u>09</u>
Net Gain	+09
NEV Parking	+03



City of Manhattan Beach  
 Community Development  
 Traffic Engineering Division

Possible Diagonal Parking  
 15<sup>th</sup> Street  
 Valley Drive to Highland Avenue





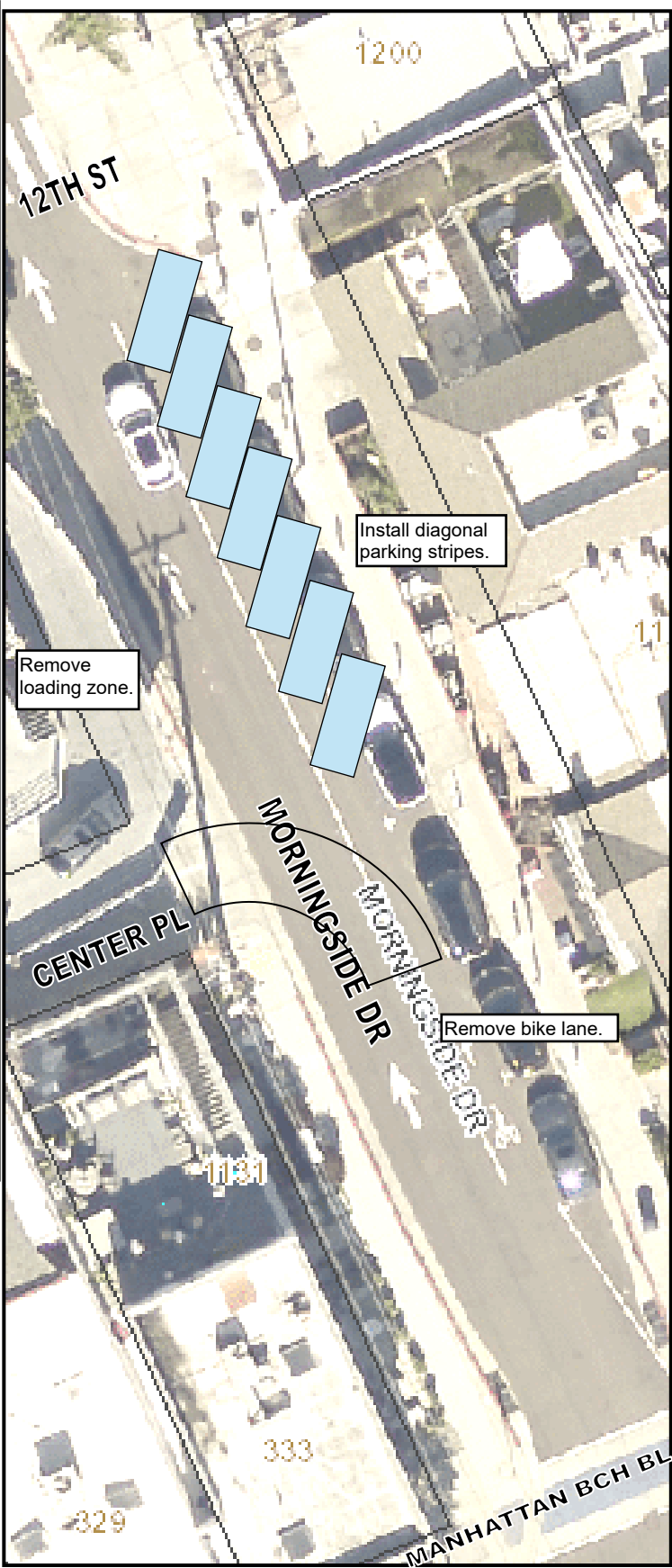
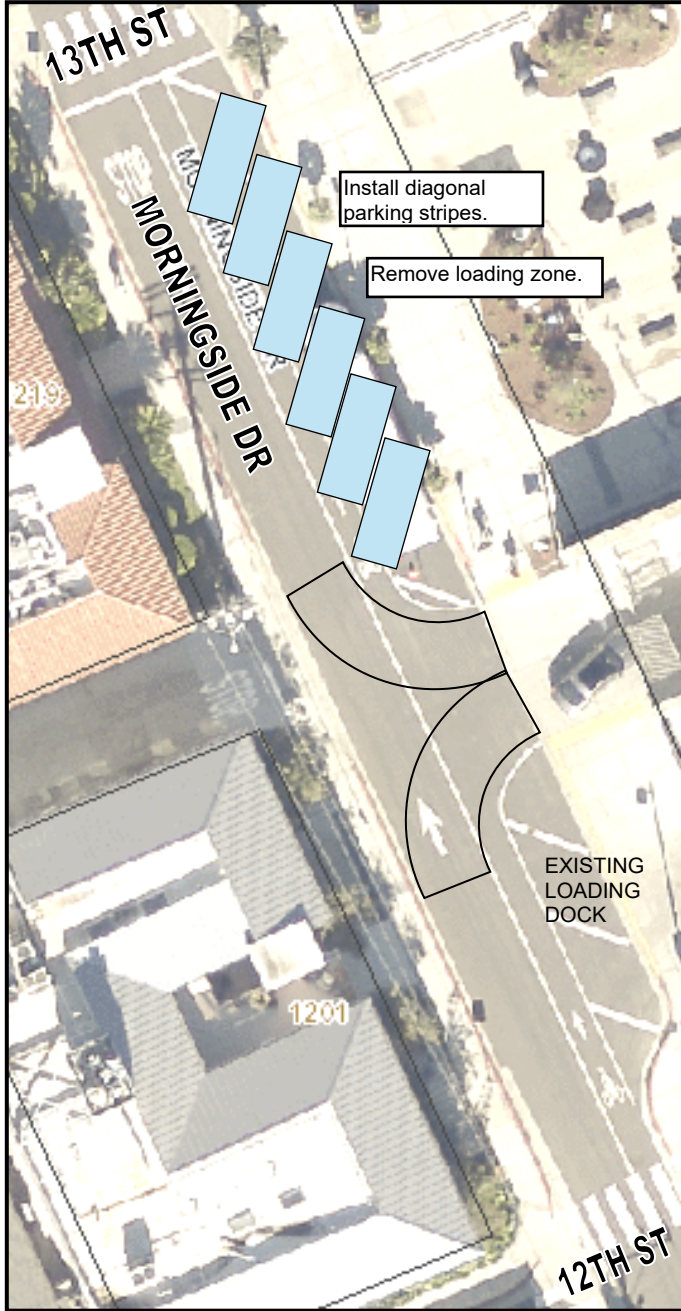
PARKING SUPPLY	
Proposed Parking	14
Existing Parking	00
Net Gain	+14



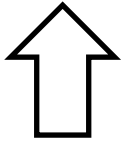
City of Manhattan Beach  
 Community Development  
 Traffic Engineering Division

Possible Street Parking  
 Valley Drive  
 Manhattan Beach Bl. to 13<sup>th</sup> Street





<b>PARKING SUPPLY</b>	
EXISTING	7
PROPOSED	16
NET GAIN*	+9
*Requires loading zone removal	



City of Manhattan Beach  
 Community Development  
 Traffic Engineering Division

Possible Diagonal Parking  
 Morningside Drive  
 Manhattan Beach Boulevard to 13<sup>th</sup> Street



Install diagonal parking stripes.

Install diagonal parking stripes.

PARKING SUPPLY	
Proposed Parking	07
Existing Parking	04
Net Gain	+03



City of Manhattan Beach  
Community Development  
Traffic Engineering Division

Possible Diagonal Parking  
Manhattan Avenue  
11<sup>th</sup> Street to Manhattan Beach Boulevard





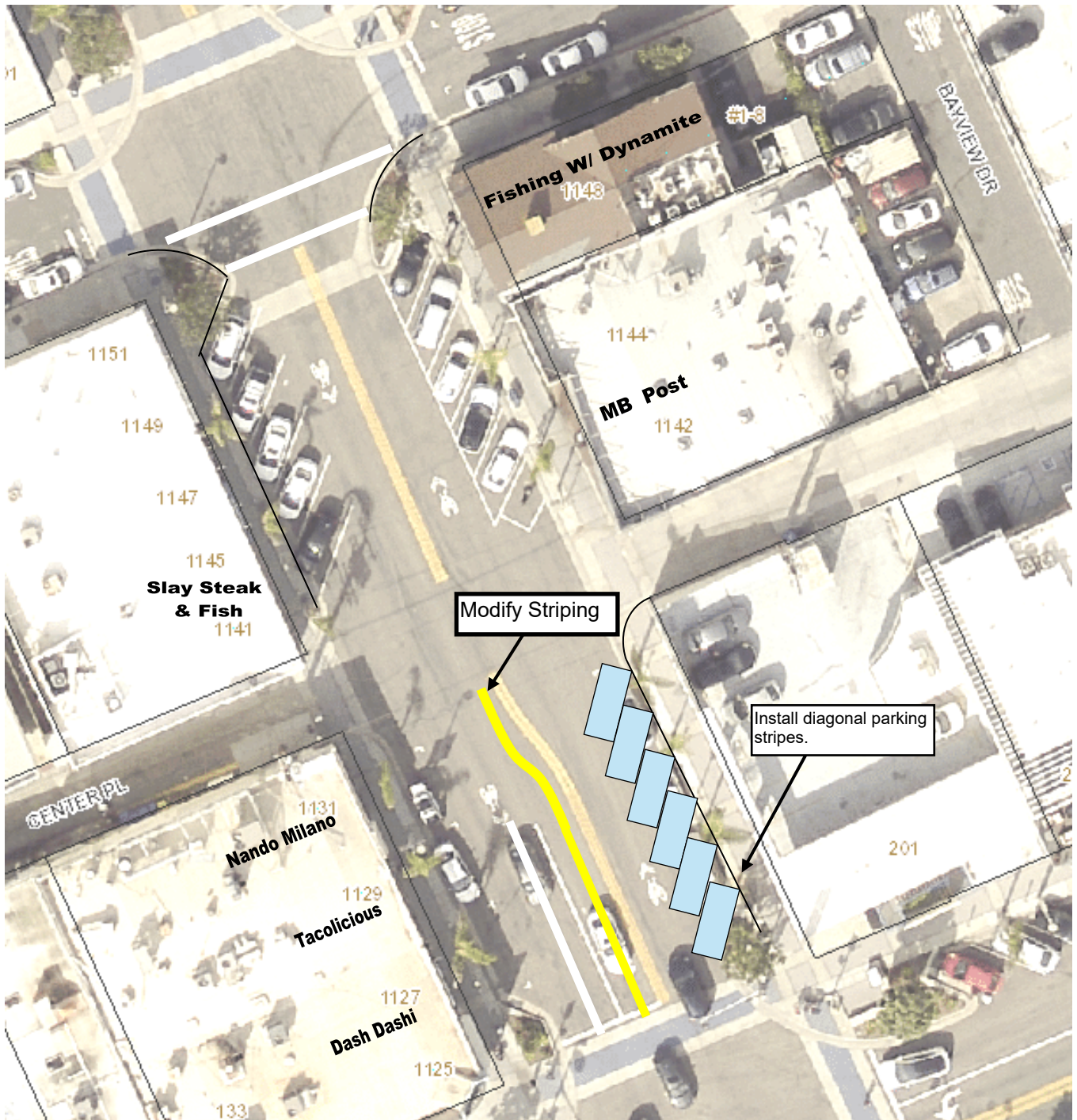
PARKING SUPPLY	
Proposed Parking	07
Existing Parking	<u>03</u>
Net Gain	+04



City of Manhattan Beach  
 Community Development  
 Traffic Engineering Division

Possible Diagonal Parking  
 Manhattan Avenue  
 11<sup>th</sup> Street to Manhattan Beach Boulevard





Modify Striping

Install diagonal parking stripes.

<u>PARKING SUPPLY</u>	
Proposed Parking	06
Existing Parking	<u>03</u>
Net Gain	+03



City of Manhattan Beach  
Community Development  
Traffic Engineering Division

Possible Diagonal Parking  
Manhattan Avenue  
North of Manhattan Beach Boulevard





Modify diagonal parking stripes.

PARKING SUPPLY	
Proposed Parking	06
Existing Parking	<u>05</u>
Net Gain	+01



City of Manhattan Beach  
 Community Development  
 Traffic Engineering Division

Possible Diagonal Parking  
 Manhattan Avenue  
 10<sup>th</sup> Street to 11<sup>th</sup> Street





<u>PARKING SUPPLY</u>	
Proposed Parking	13
Existing Parking	<u>10</u>
Net Gain	+03



City of Manhattan Beach  
 Community Development  
 Traffic Engineering Division

Possible Diagonal Parking  
 Manhattan Beach Boulevard  
 Ocean Drive to The Strand



# Lot 1

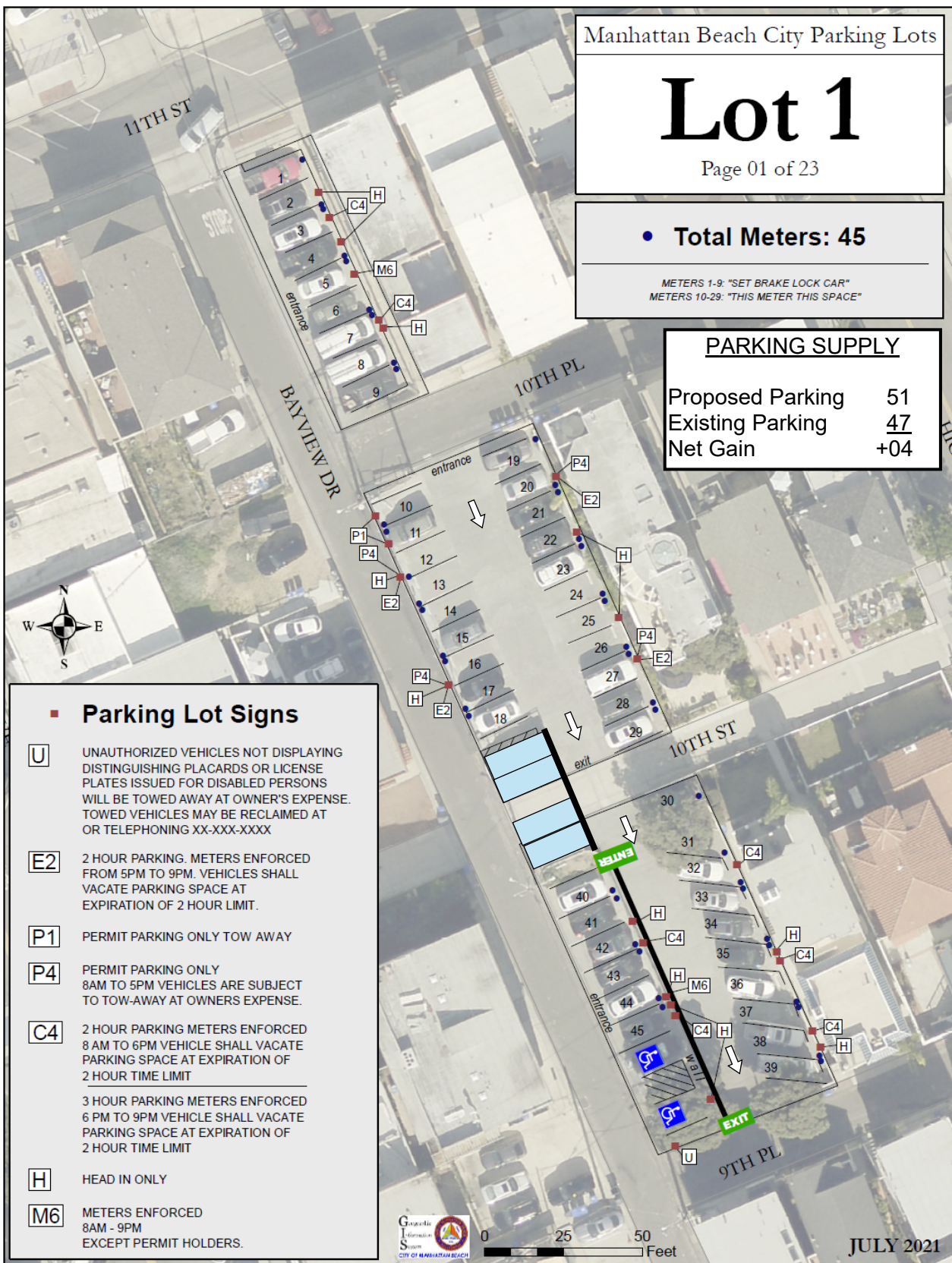
Page 01 of 23

• **Total Meters: 45**

METERS 1-9: "SET BRAKE LOCK CAR"  
METERS 10-29: "THIS METER THIS SPACE"

### PARKING SUPPLY

Proposed Parking	51
Existing Parking	47
Net Gain	+04



### ■ Parking Lot Signs

- U** UNAUTHORIZED VEHICLES NOT DISPLAYING DISTINGUISHING PLACARDS OR LICENSE PLATES ISSUED FOR DISABLED PERSONS WILL BE TOWED AWAY AT OWNER'S EXPENSE. TOWED VEHICLES MAY BE RECLAIMED AT OR TELEPHONING XX-XXX-XXXX
- E2** 2 HOUR PARKING. METERS ENFORCED FROM 5PM TO 9PM. VEHICLES SHALL VACATE PARKING SPACE AT EXPIRATION OF 2 HOUR LIMIT.
- P1** PERMIT PARKING ONLY TOW AWAY
- P4** PERMIT PARKING ONLY  
8AM TO 5PM VEHICLES ARE SUBJECT TO TOW-AWAY AT OWNERS EXPENSE.
- C4** 2 HOUR PARKING METERS ENFORCED 8 AM TO 6PM VEHICLE SHALL VACATE PARKING SPACE AT EXPIRATION OF 2 HOUR TIME LIMIT  
  
3 HOUR PARKING METERS ENFORCED 6 PM TO 9PM VEHICLE SHALL VACATE PARKING SPACE AT EXPIRATION OF 2 HOUR TIME LIMIT
- H** HEAD IN ONLY
- M6** METERS ENFORCED 8AM - 9PM EXCEPT PERMIT HOLDERS.

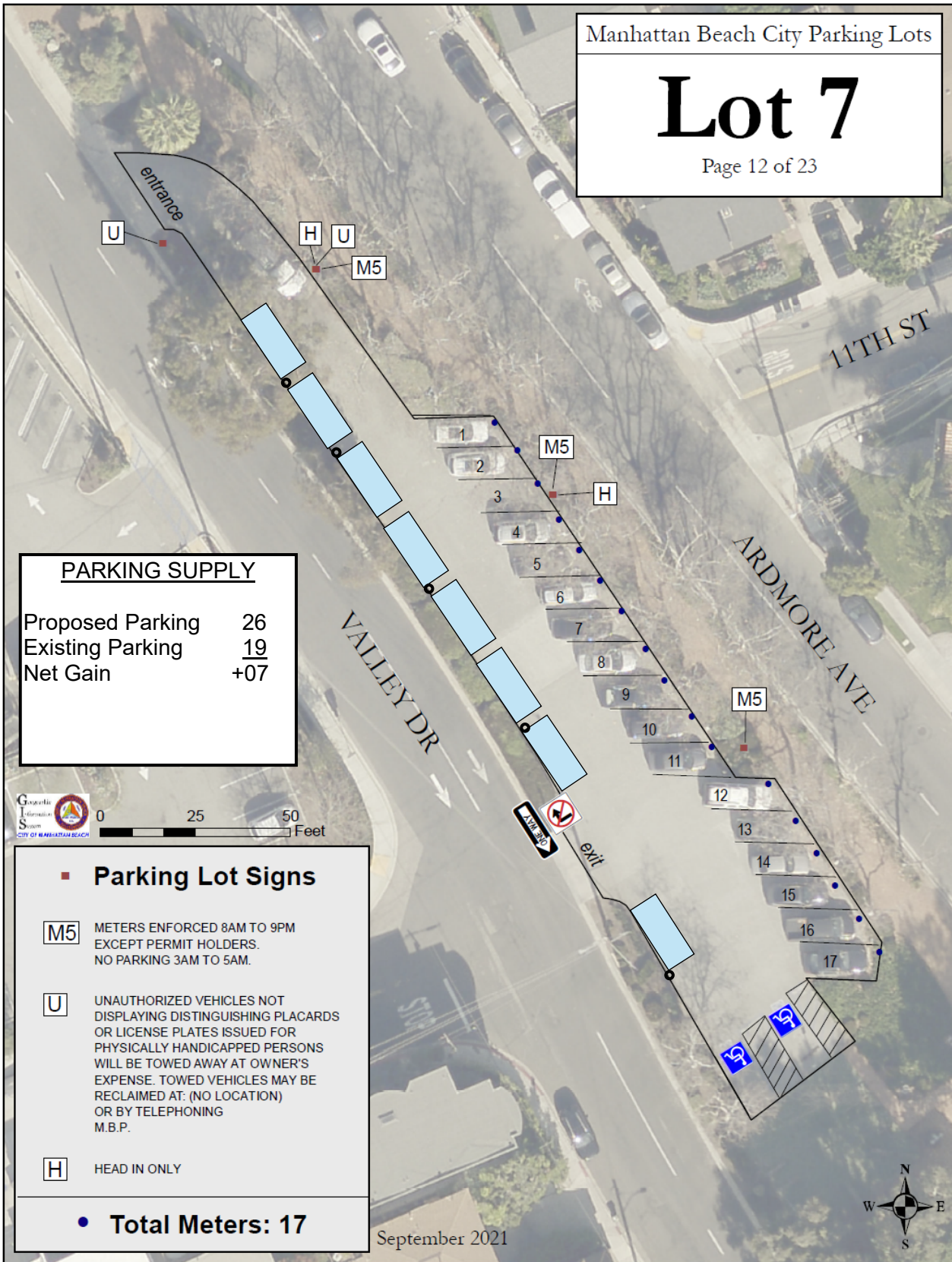


City of Manhattan Beach  
Community Development  
Traffic Engineering Division

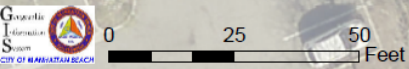
Possible Alternate Parking  
Parking Lot 1  
Bayview Drive at 10<sup>th</sup> Street



# Lot 7



PARKING SUPPLY	
Proposed Parking	26
Existing Parking	19
Net Gain	+07



- Parking Lot Signs**

**M5** METERS ENFORCED 8AM TO 9PM EXCEPT PERMIT HOLDERS. NO PARKING 3AM TO 5AM.

**U** UNAUTHORIZED VEHICLES NOT DISPLAYING DISTINGUISHING PLACARDS OR LICENSE PLATES ISSUED FOR PHYSICALLY HANDICAPPED PERSONS WILL BE TOWED AWAY AT OWNER'S EXPENSE. TOWED VEHICLES MAY BE RECLAIMED AT: (NO LOCATION) OR BY TELEPHONING M.B.P.

**H** HEAD IN ONLY
- Total Meters: 17**

September 2021



City of Manhattan Beach  
Community Development  
Traffic Engineering Division

Possible Parking Alternative  
Parking Lot 7  
Valley Drive South of Manhattan Beach Bl.