



# ADVANCEDmeter

**MANHATTAN BEACH  
CITY COUNCIL  
NOVEMBER 4, 2014**

# What is the Advanced Meter Project?

- California Public Utilities Commission (CPUC) decision received in April 2010 authorizing \$1.05 billion to upgrade approximately 6 million existing natural gas meters with a communication device by 2017
- Automatically reads and securely transmits hourly gas usage information on a “next day” basis
- Provides more frequent and detailed information to help customers better manage energy use and costs
- SoCalGas employees will perform installations
- Advanced meter installation began in October 2012 in South East LA County
  - Manhattan Beach scheduled Mid 2015

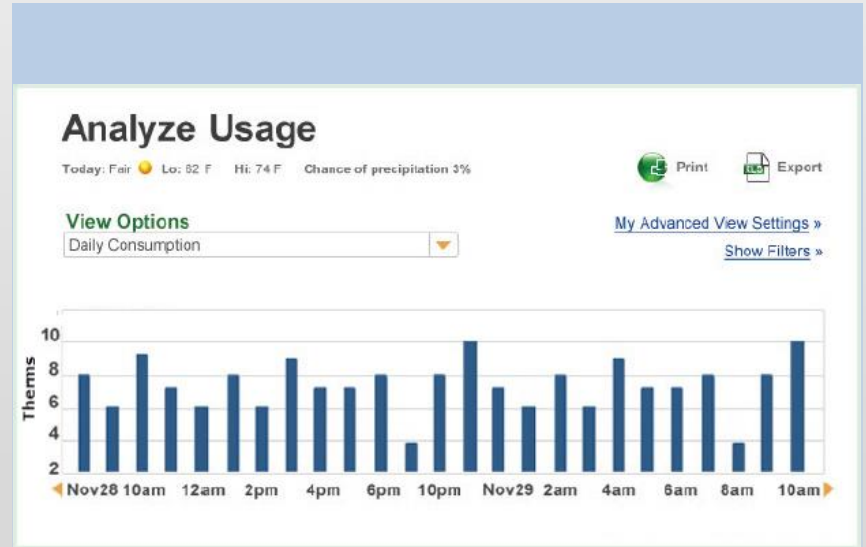


*PHOTOS FOR DISCUSSION PURPOSES ONLY*

# Information: Present - Future



Monthly Bill



Hourly Information

# What are the Benefits?

---



**Get  
Information**



**Save  
Money**



**Help the  
Environment**

# How Does it Work?

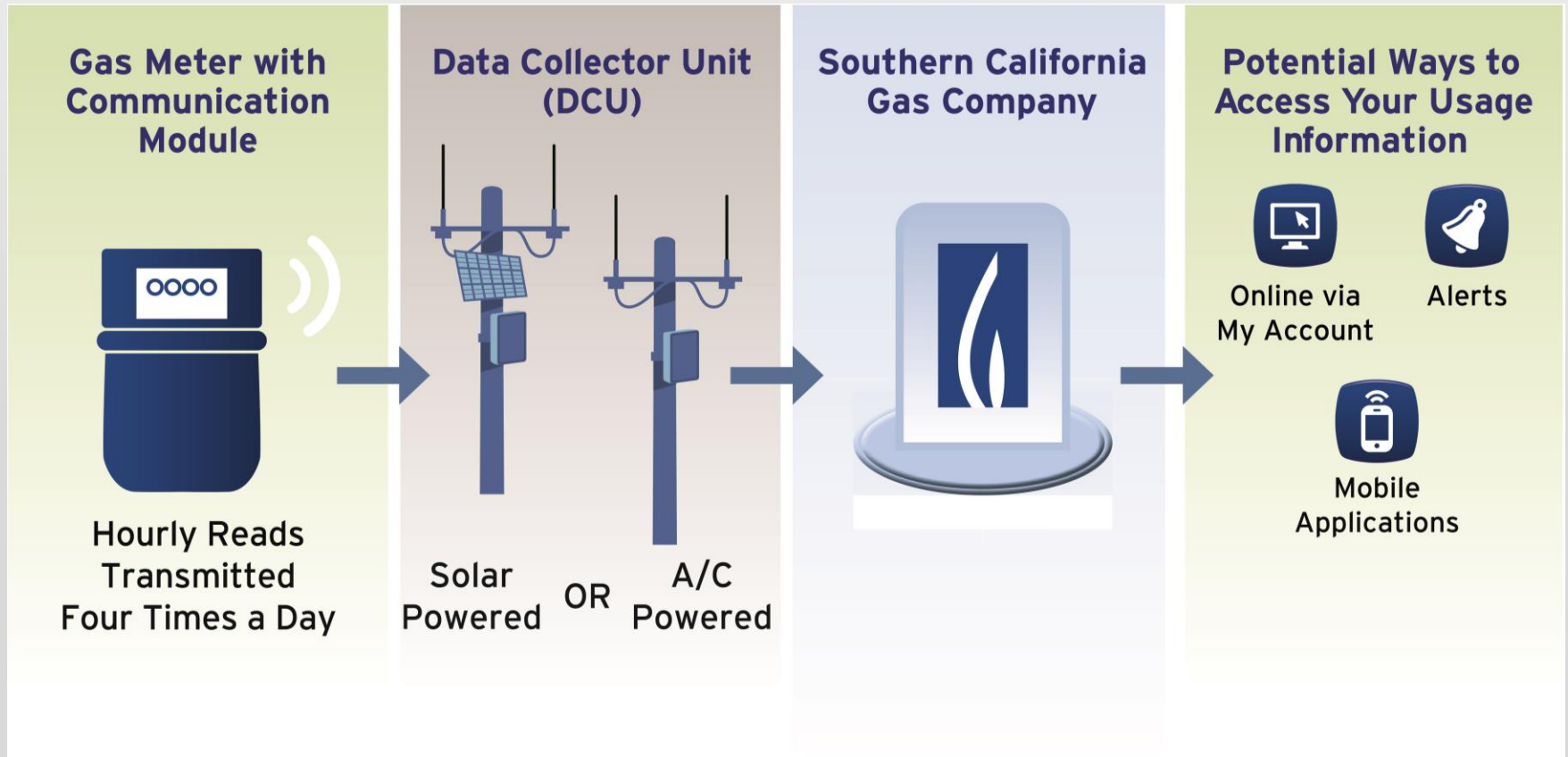
*Gas usage is still recorded in the traditional way, it's a new communication device that transmits the information electronically*



- Does not change the functionality of the gas meter; No remote connect / disconnect capabilities
- Device is **off** most of the time
- Securely transmits 12 hours of data 4 times per day to a Data Collector Unit (total “on” time is less than 2 minutes per year)
- **Battery-powered**
- Does not communicate with other meters
- Does not communicate with appliances in the home

**ADVANCEDmeter**

# How is the information transmitted?



# About the Communication Network – Data Collection Units (DCUs)

- Installing approximately 4,000 DCUs throughout SoCalGas' service territory
- Mostly pole mounted
- Antennas mounted 28 feet or higher (licensed 450 MHz frequency)
- Typically, Data Collector box is placed at top of pole with solar panel and antennas
- A/C\* or Solar Powered
- 21.5" H x 13.6" W x 8.25" D
- Maximum DCU weight is 55 lbs
- Built-in Redundancy: advanced meters communicate with two to three DCUs

# Data Collection Units (DCUs)



- Installed in areas where least impactful to the community
- Options of pole types to match existing infrastructure (wood, cement, steel)
- If viable assets exist in city (Edison poles, city poles, etc) can look into potential attachments if meets network need and passes engineering requirements



# Community Outreach Efforts

---

- **Phase 1: Network Construction Customer Notification**

*SoCalGas will notify impacted customers of network construction activity. Notification letter will be distributed to customers 2 weeks prior to network construction.*

- **Phase 2: Advanced Meter Installation Outreach**

*SoCalGas will implement local community outreach and customer communication to prepare customers for advanced meter installation*

# Local Communication & Community Outreach

## 90 to 60 Days Prior to Installation:

Briefings with Local Elected Officials, Community Leaders, Chambers, etc.

## 60 to 30 Days Prior to Installation:

Local Community Involvement & Events

## 30 Days Prior to Installation:

Customer receives notification letter  
*(geographically distributed)*

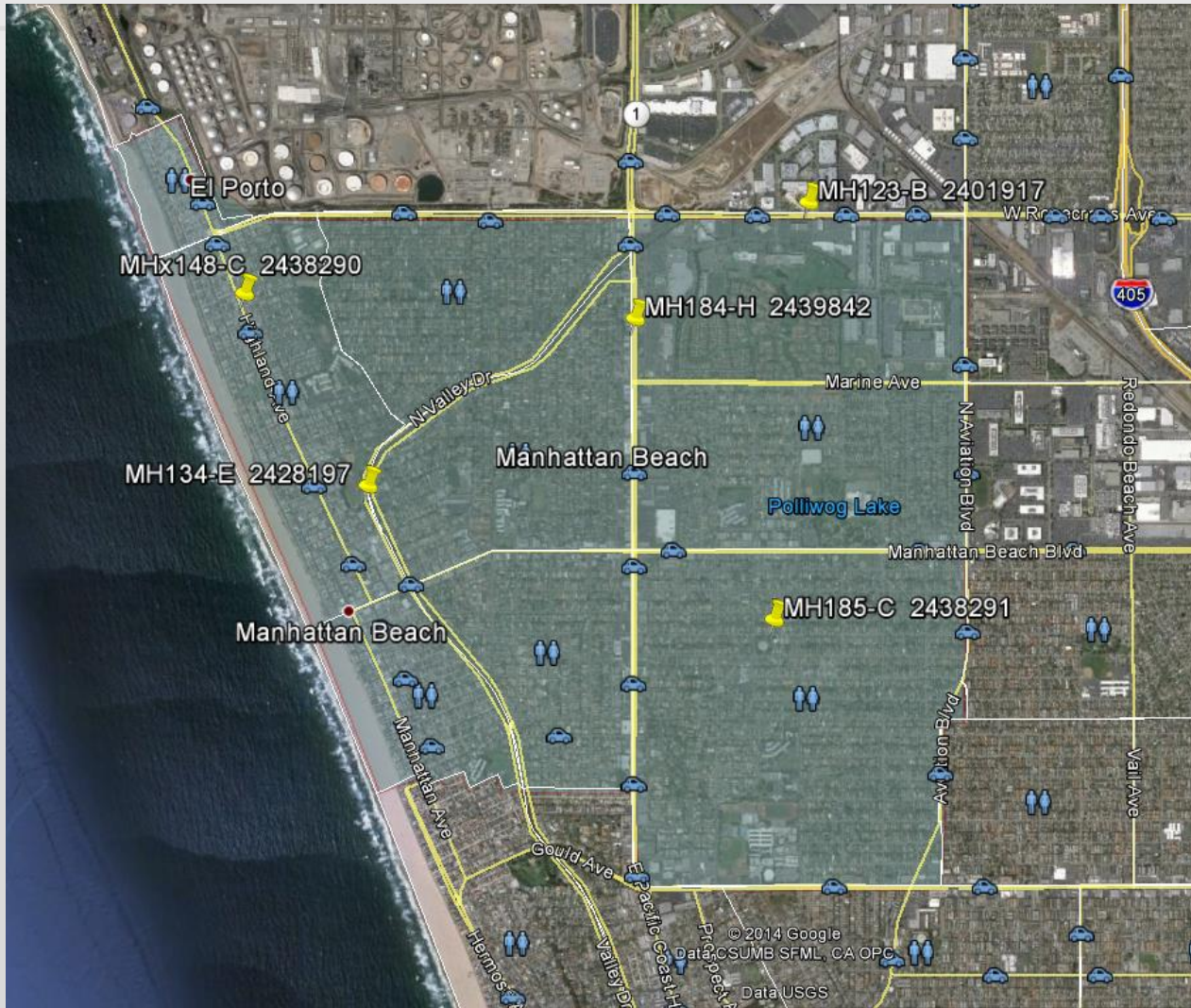
## Installation Day:

Customer receives door hanger confirming installation has occurred

## Post Installation:

Obtain feedback on installation experience

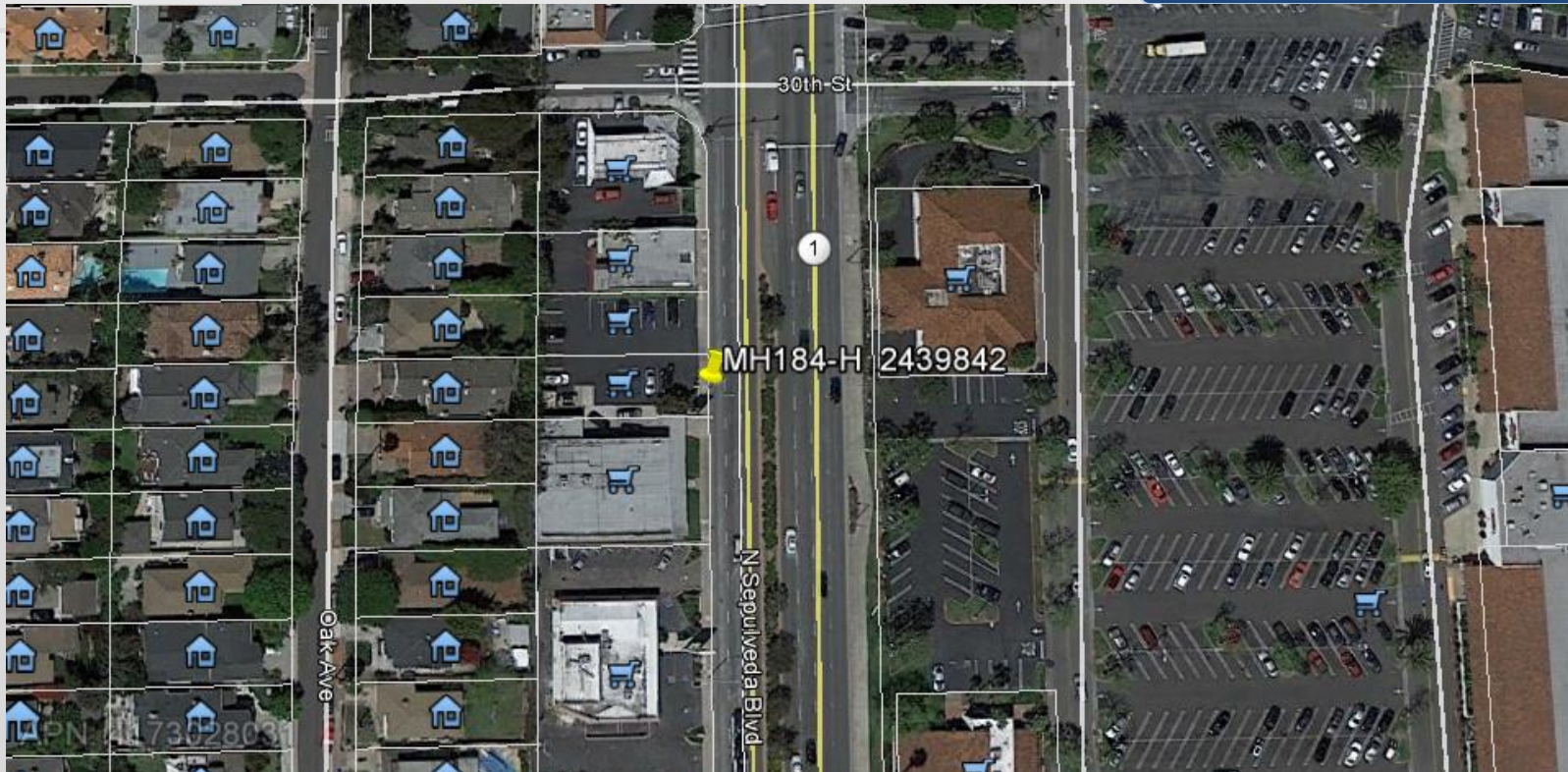
# Final Site Selections - 5 Data Collector Units



# DCU Search Ring Locations

Site	Address	Latitude	Longitude
MH184-H	On N. Sepulveda Blvd.; East of 2809 N. Sepulveda Blvd.	33.89668	-118.39616
MH134-E	On N Valley Dr; North of 1601 N Valley Dr	33.88948	-118.41008
MH123-B	On Rosecrans Ave; North of 1500 Rosecrans Ave	33.90174	-118.38713
<i>MHx148-C</i>	<i>On Highland Ave; East of 3111 Highland Ave</i>	<i>33.89779</i>	<i>-118.41652</i>
MH185-C	On 8th St; South of 1427 8th St	33.88371	-118.38893

# MH184-H



On N. Sepulveda Blvd.; East of 2809 N. Sepulveda Blvd.

## Notes

196 ft. South of the South curbface of 30th St.  
2 ft. West of the West curbface of N. Sepulveda Blvd.

**Attachment – SCE Street Light**

DCU will be located at approximately  
26 feet above ground level

**MH184-H**



On N. Sepulveda Blvd.; East of 2809 N. Sepulveda Blvd.

#### Notes

196 ft. South of the South curbface of 30th St.  
2 ft. West of the West curbface of N. Sepulveda Blvd.

**Attachment – SCE Street Light**

**MH134-E**



**On N. Valley Dr.; North of 1601 N. Valley Drive**

**Notes**

505 Feet North of the North Curbside of 15th St.  
2 Feet West of the West Curbside of N Valley Dr.

**Attachment – SCE Street Light**

DCU will be located at approximately  
26 feet above ground level

**MH134-E**



**On N. Valley Dr.; North of 1601 N. Valley Drive**

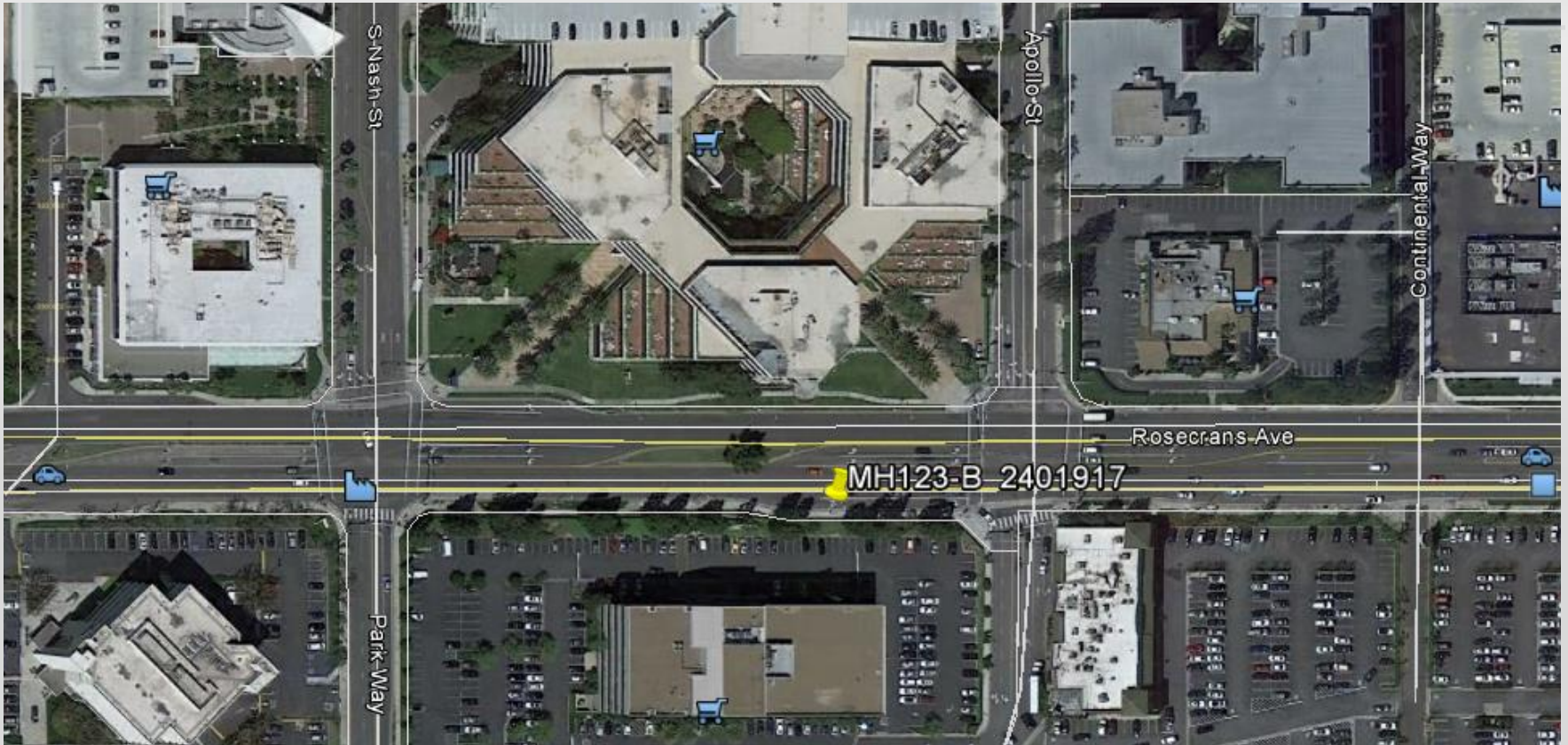
**Notes**

505 Feet North of the North Curbside of 15th St.  
2 Feet West of the West Curbside of N Valley Dr.

**Attachment – SCE Street Light**



**MH123-B**



**On Rosecrans Ave.; North of 1500 Rosecrans Ave.**

**Notes**

154ft. West of the West curb face of Market Place  
2ft. South of the South curb face of Rosecrans Ave.

**Attachment – SCE Street Light**

DCU will be located at approximately  
26 feet above ground level

**MH123-B**



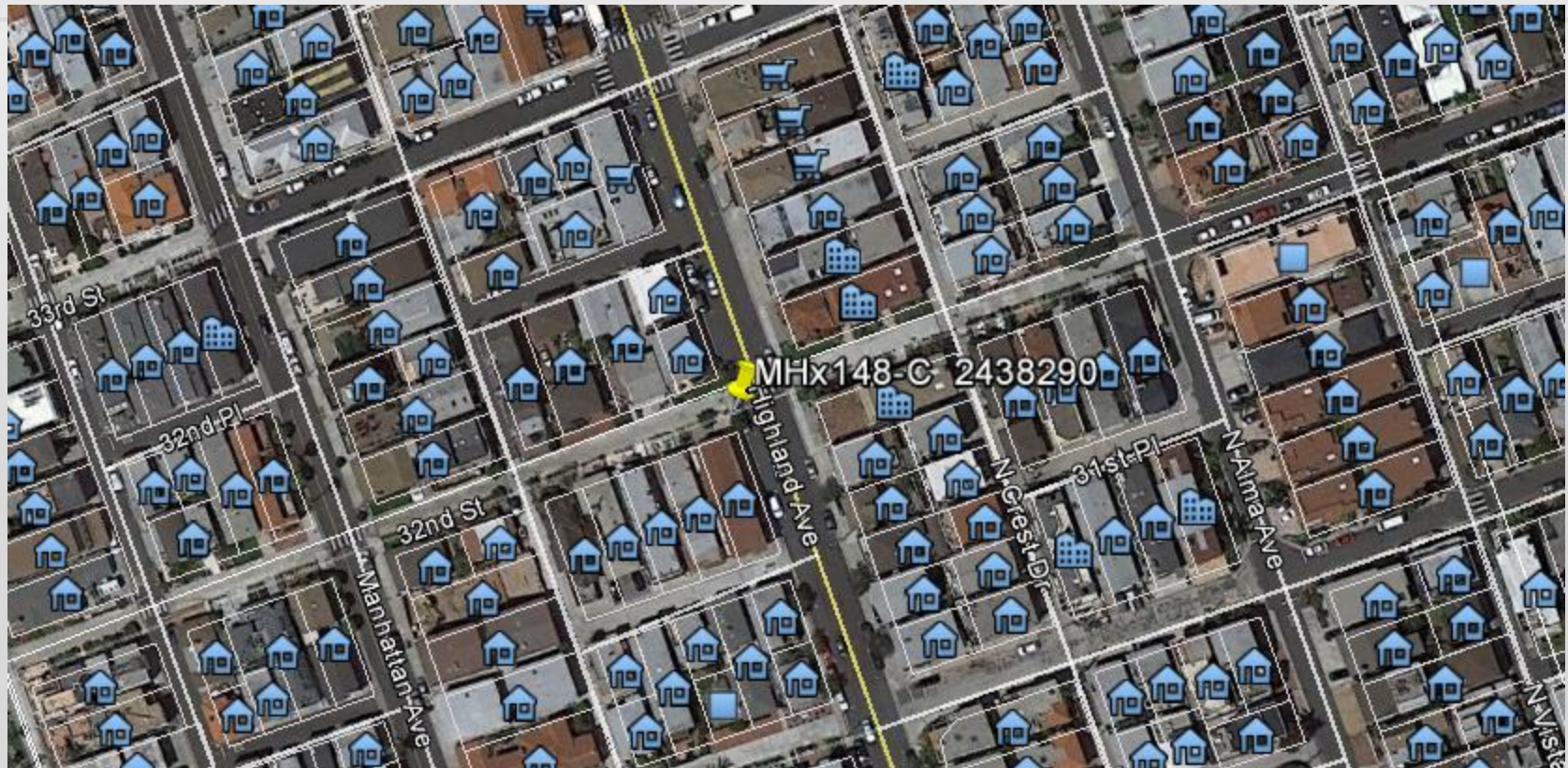
**On Rosecrans Ave.; North of 1500 Rosecrans Ave.**

**Notes**

154ft. West of the West curb face of Market Place  
2ft. South of the South curb face of Rosecrans Ave.

**Attachment – SCE Street Light**

**MHx148-C**



**On Highland Ave.; East of 3111 Highland Ave.**

**Notes**

4 Feet South of the South Edge of Pavement of 32nd St.  
2 Feet West of the West Curbside of Highland Ave.

**Attachment – SCE Street Light**

DCU will be located at approximately  
26 feet above ground level

**MHx148-C**



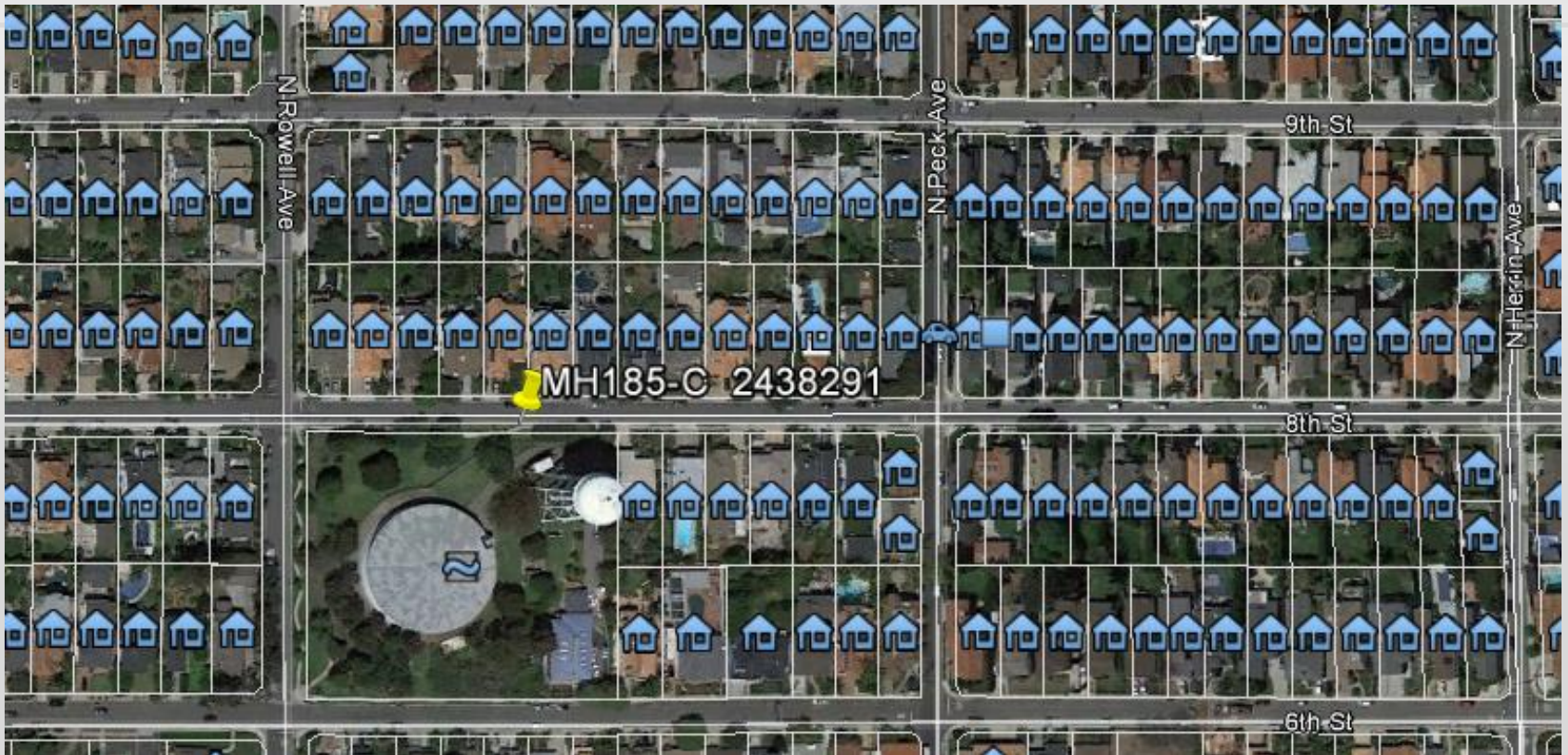
**On Highland Ave.; East of 3111 Highland Ave.**

**Notes**

4 Feet South of the South Edge of Pavement of 32nd St.  
2 Feet West of the West Curbside of Highland Ave.

**Attachment – SCE Street Light**

**MH185-C**



**On 8th Street; South of 1427 8th Street**

**Notes**

467 Feet West of the West Curbside of N Peck Ave.  
3 Feet South of the South Curbside of 8th St.

**New Installation – 26' Concrete Pole**

# MH185-C

Pole will be approximately  
26 feet, 4 inches tall



On 8th Street; South of 1427 8th Street

## Notes

467 Feet West of the West Curbside of N Peck Ave.  
3 Feet South of the South Curbside of 8th St.

**New Installation – 26' Concrete Pole**

# Contact Information

- To learn more about the project, visit:

[socialgas.com/advanced](http://socialgas.com/advanced)

Or Contact:

- Site Acquisition Manager
  - Shaun Baptiste
  - 310-755-8792
  - [SBaptiste@semprautilities.com](mailto:SBaptiste@semprautilities.com)
- Public Affairs Manager
  - Marcella Low
  - (310) 605-4194 Office
  - (310) 613-8875 Cell
  - [MLow@semprautilities.com](mailto:MLow@semprautilities.com)

