

# RLA CONSERVATION ART ASSESSMENT

DECEMBER 3, 2024



\*Note: This PowerPoint presentation is intended solely as a visual aid to an oral staff presentation of an agenda report topic. In the event of any differences between the presentation and the agenda report, the information in the agenda report prevails.\*

# BACKGROUND

- On September 19, 2023, City Council approved a contract with RLA Conservation, LLC, to evaluate the City's art collection and recommend conservation treatments and maintenance plans.
- RLA Conservation specializes in preserving and restoring sculptures, historic buildings, and artifacts, offering expertise in materials analysis, environmental impact assessments, and customized restoration solutions.



# OVERVIEW

The conservation survey included a structured assessment of each artwork's condition, conservation needs, and cost estimates.

Artworks were categorized by urgency:

- **Priority 1:** Severe issues needing immediate attention to prevent irreversible damage.
- **Priority 2:** Moderate damage, addressable within 2–4 years.
- **Priority 3:** Minor treatment needed within 3–5 years with continued maintenance.



# DISCUSSION

The Cultural Arts Commission ranked artworks and provided recommendations based on specific criteria. Priority I artworks were automatically prioritized due to poor condition or safety risks requiring immediate attention.

For other artworks, the criteria included:

- **Quick Fix:** Minimal investment with significant preservation impact.
- **Overall Aesthetics:** Lower priority for visually appealing pieces despite needed repairs.
- **Cultural Significance:** Higher priority for artworks with greater community importance.



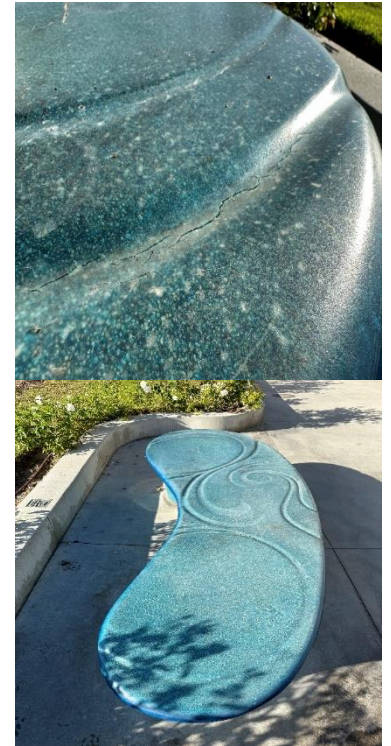
# PRIORITY 1 ARTWORKS



Mankind's Struggle for  
Eternal Peace



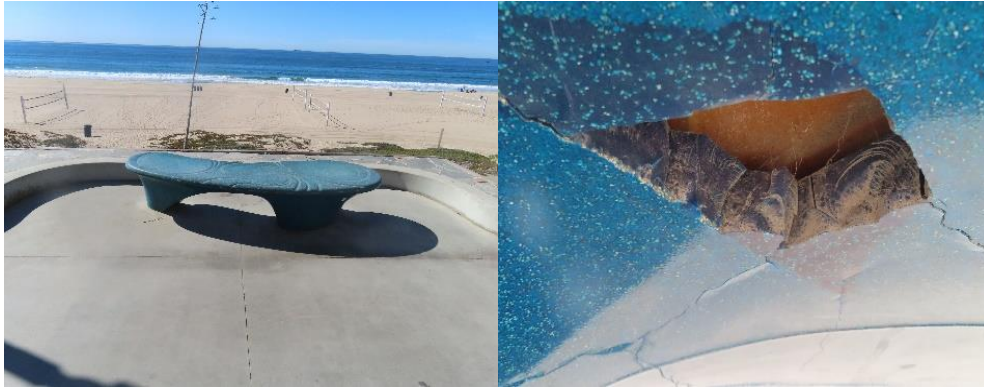
Beyond this Point Lies the Rest of the World



Strand Bench  
J.W. Keever



# PRIORITY 1 ARTWORKS



Strand Bench McAfee



Strand Bench Content

# PRIORITY 2 ARTWORKS



Martin Ganz Memorial



Catalina Classic Memorial Statue



9-11-01 Memorial

# PRIORITY 2 ARTWORKS CONTINUED



Metlox Kiln



Remember When



Escobar Sculpture Bench





# PRIORITY 3 ARTWORKS



Light Gate



Leadership MB Community Mural



# FISCAL IMPLICATIONS

- The estimated total for necessary conservation and intervention treatments is \$201,025.
- Conservation and maintenance costs for the City's art collection can be funded by the Public Arts Fund (PAF).
- The PAF currently holds approximately \$1.6 million, with \$883,000 allocated and \$711,000 unallocated.
- Approximately \$73,000 must be allocated before December 31, 2024, to avoid fund expiration.



# RECOMMENDATIONS

Staff recommends that the City Council:

1. Approve the RLA Conservation art assessment recommendations from the Cultural Arts Commission;
2. Allocate \$201,025 from the Public Arts Fund; and
3. Direct the Cultural Arts Commission to develop a formal deaccession policy and return for Council consideration.

