

CITY OF MANHATTAN BEACH

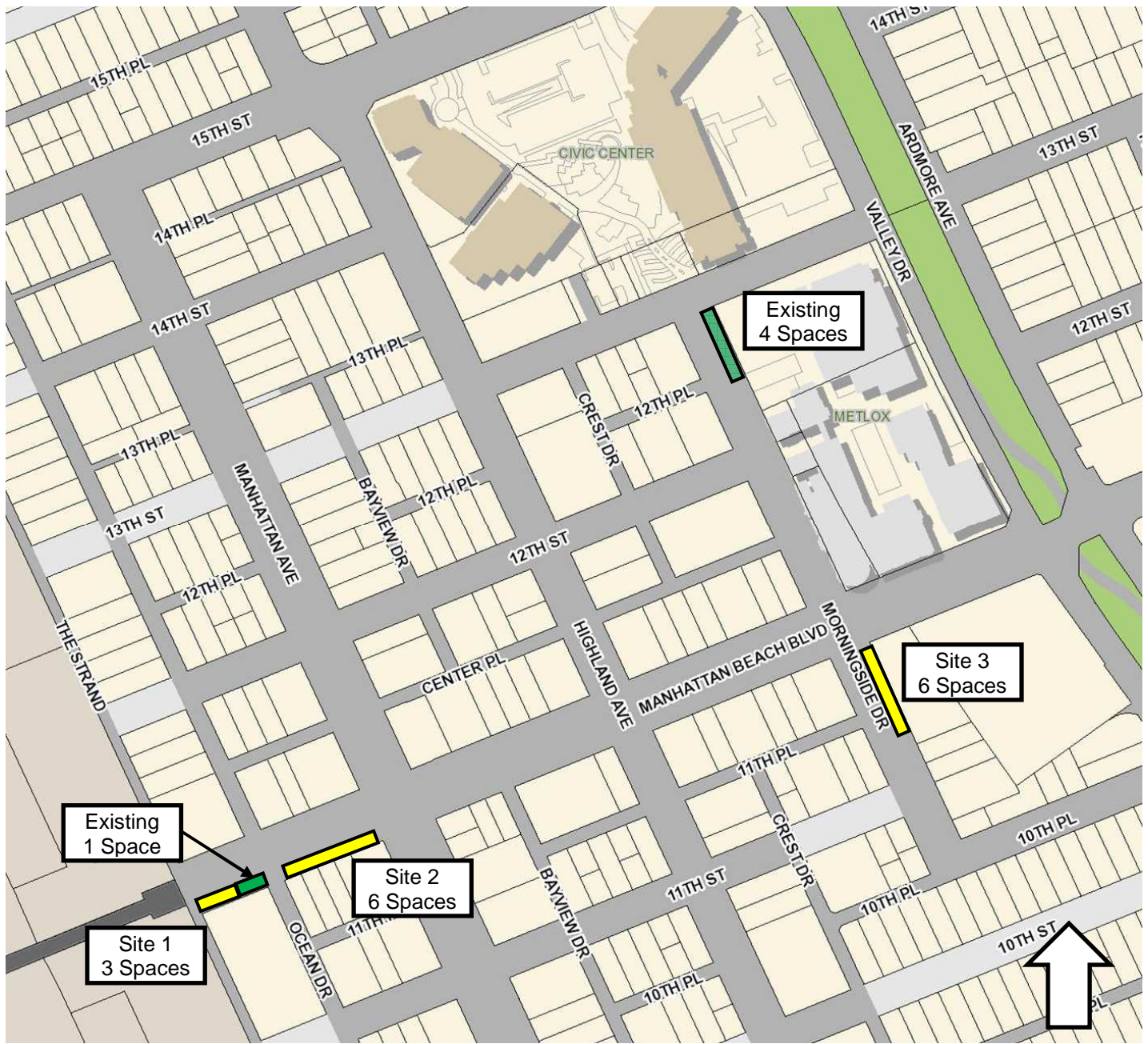
POSSIBLE TAXICAB STAND LOCATIONS

#	LOCATION	SPACES	NOTES
1	Manhattan Beach Bl. West of Ocean Drive (South)	3	2-Hr metered*, steep slope
2	Manhattan Beach Bl. East of Ocean Drive (South)	6	2-Hr metered(5)*, 24-Min metered (1), fronts dining area
3	Morningside Drive South of Manhattan Beach Bl. (East)	6	2-Hr metered*, bank frontage
4	Rosecrans Ave. East of Highland Ave. (North)	4	2-Hr metered*, fronts offices/pkg. lot

* All metered spaces are 8am to 9pm.

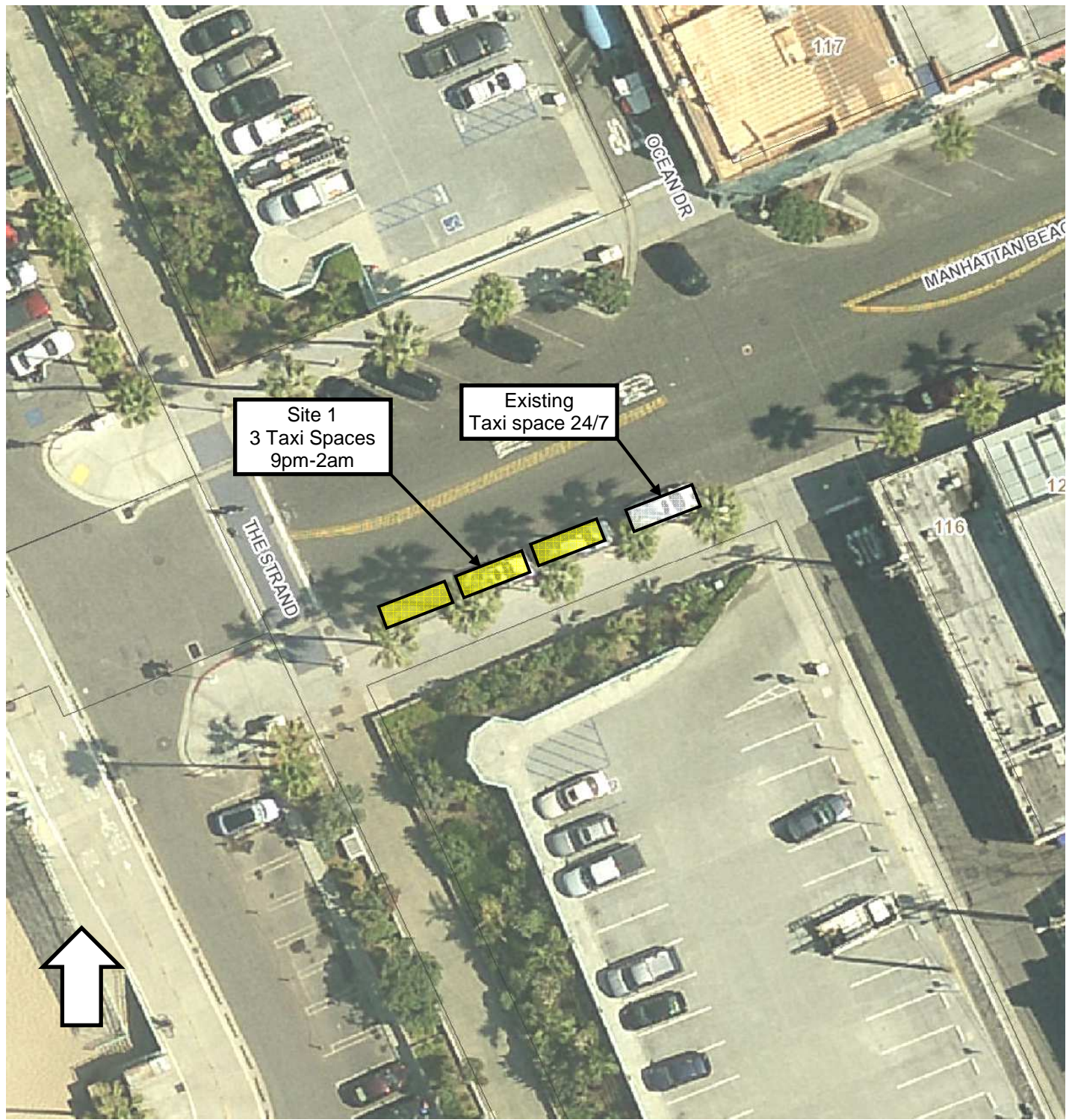
EXISTING TAXICAB STAND LOCATIONS

#	LOCATION	SPACES	NOTES
	Manhattan Beach Bl. West of Ocean Drive (South)	1	24/7 Reserved
	Morningside Drive South of 13 th Street (East)	4	6pm to 2am, fronts Metlox Plaza



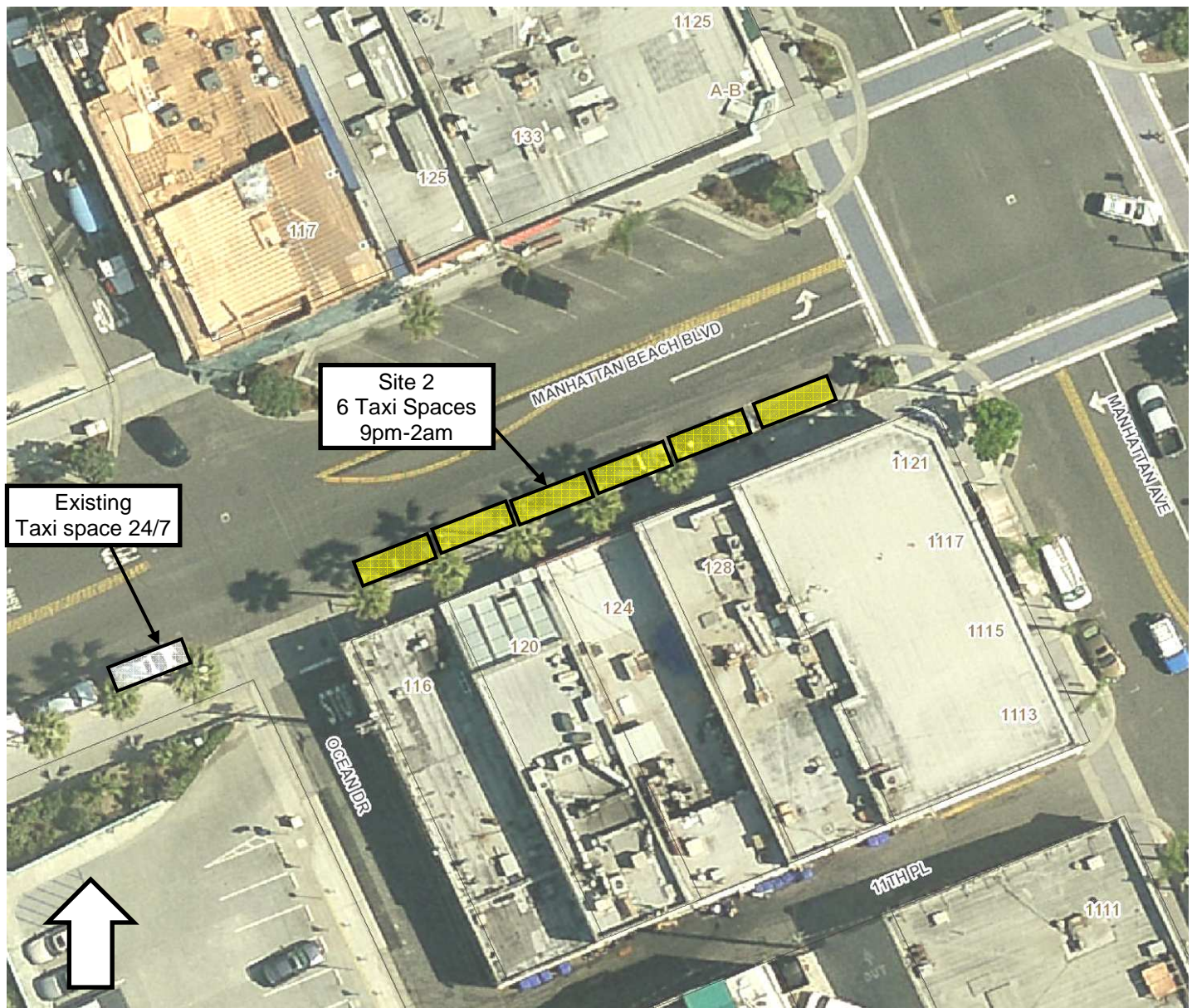
City of Manhattan Beach
 Community Development
 Traffic Engineering Division

Possible Taxicab Stand Locations
 Downtown Manhattan Beach



City of Manhattan Beach
Community Development
Traffic Engineering Division

Possible Taxicab Stand Locations
Site 1
Manhattan Beach Bl. West of Ocean Dr.



City of Manhattan Beach
Community Development
Traffic Engineering Division

Possible Taxicab Stand Locations
Site 2
Manhattan Beach Bl. East of Ocean Dr.

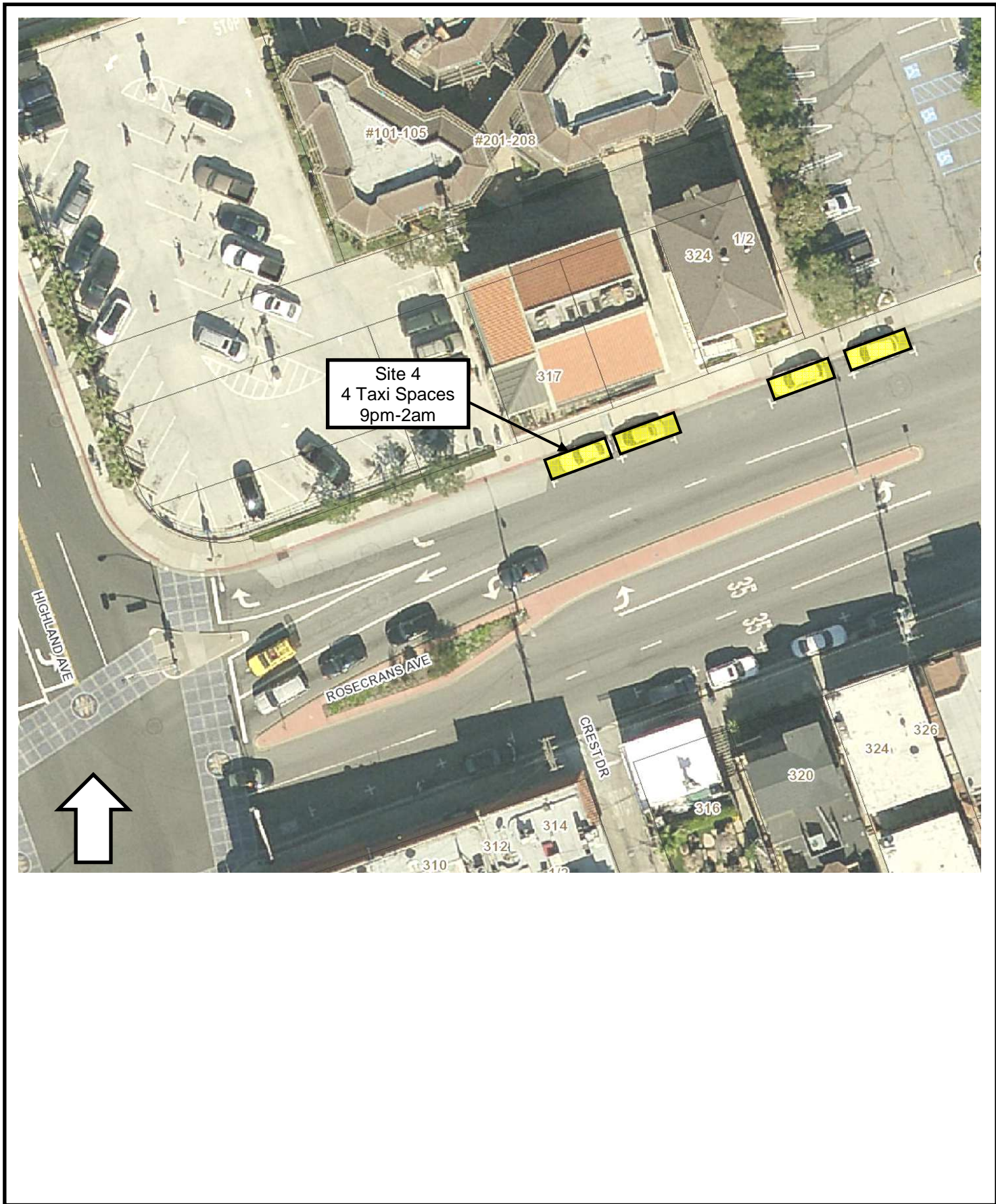


Site 3
6 Taxi Spaces
9pm-2am



City of Manhattan Beach
Community Development
Traffic Engineering Division

Possible Taxicab Stand Locations
Site 3
Morningside Dr. South of Manhattan Beach Bl.



Site 4
4 Taxi Spaces
9pm-2am



City of Manhattan Beach
Community Development
Traffic Engineering Division

Possible Taxicab Stand Locations
Site 4
Rosecrans Ave. East of Highland Ave.