

DISCUSSION OF OPTIONS FOR THE REPLACEMENT OF EXISTING ESCALATORS AT THE METLOX PARKING STRUCTURE

JULY 16, 2024



Note: This PowerPoint presentation is intended solely as a visual aid to an oral staff presentation of an agenda report topic. In the event of any differences between the presentation and the agenda report, the information in the agenda report prevails.

BACKGROUND

- Metlox Retail and Parking Structure dedicated in 2005
- Parking Structure has two levels below street grade
- Vertical access provided by Elevator, Stairs and two Escalators
- Expected Escalator lifespan of 20 – 25 years (HKA Elevator Consulting, Inc.)



EXISTING ACCESS CONDITIONS



Elevator



Stairs

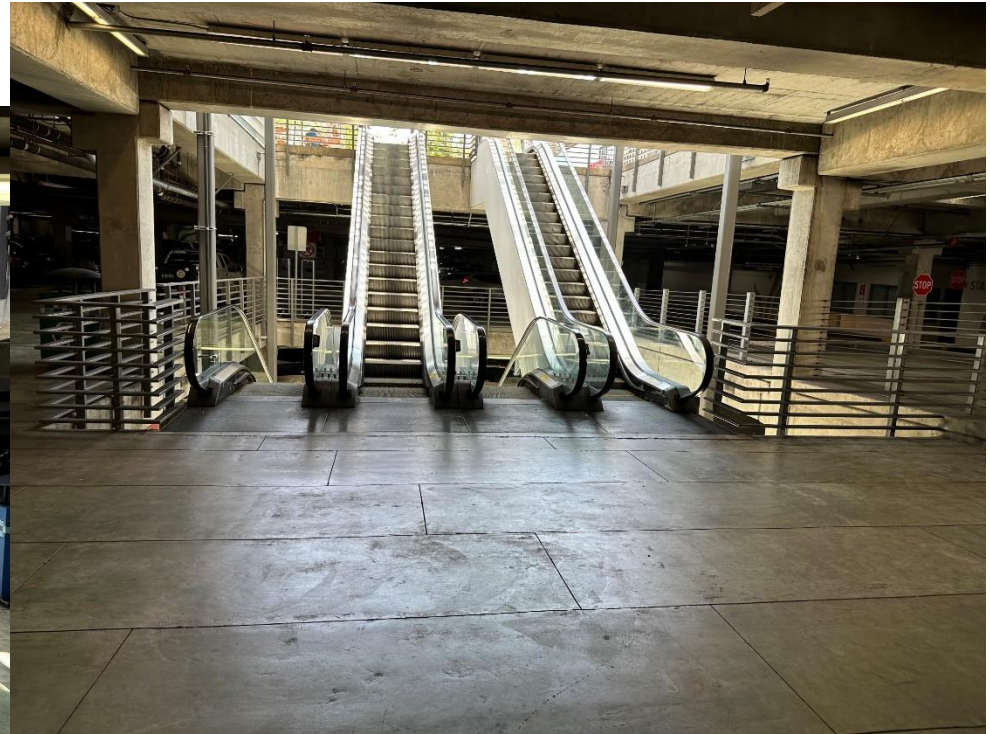


Escalators at Ground (Top) Level



EXISTING ESCALATORS

Mid Level



Lowest Level



CITY OF
MANHATTAN BEACH

DISCUSSION OF OPTIONS FOR THE REPLACEMENT OF EXISTING ESCALATORS AT THE METLOX PARKING STRUCTURE
JULY 16, 2024

4

"Note: This PowerPoint presentation is intended solely as a visual aid to an oral staff presentation of an agenda report topic. In the event of any differences between the presentation and the agenda report, the information in the agenda report prevails."

ANNUAL MAINTENANCE COST

- Annual maintenance ranges from \$50,000 - \$100,000
- Escalator downtime is of concern to the Public
- End of lifespan needs disposition planning
- CIP Budget allocates a total of \$1,500,000
 1. \$1,125,000 Parking Fund
 2. Projection of \$375,000 cost share



END OF LIFESPAN DISPOSITION OPTIONS

OPTION	Rough Order of Magnitude
1. Reconstruct Escalators in kind	\$1,600,000 - \$2,000,000
2. Replace with new Escalators	\$1,200,000 - \$1,500,000
3. Replace with Elevator(s)	\$500,000 - \$1,500,000
4. Replace with Grand Stairs	\$500,000 - \$1,000,000
5. Close Escalators	\$100,000 - \$250,000



DISPOSITION OF ESCALATORS

- The Metlox Parking Structure escalators are an integrated feature of this retail and hotel development
- The Escalator Space provides both airspace and natural light into the parking structure
- The disposition of the escalators should take into account the integration of this access into both the retail area and ventilation/light functions of the vertical corridor



NEXT STEPS

- 18 – 24 Months for Planning/Design/Bid
- Public Outreach with Stakeholders – Solution is Coming!
- Discontinue Use of Escalators or Continue to Repair?



STAFF RECOMMENDATION

Staff recommends that the City Council discuss and provide direction on the future replacement options for the existing escalators at the Metlox Parking Structure.

