

The background of the slide is a photograph of the Manhattan Beach Library building at night. The building is a modern structure with a large glass facade that reflects the city lights and the dark sky. The interior lights of the building are visible through the glass, creating a warm glow. The building is situated on a street, and some streetlights and other buildings are visible in the background.

# Manhattan Beach Library Community Needs Assessment: Strategic Priorities & Spatial Assessment

---

Manhattan Beach City Council

April 21, 2026

# Key Themes of Community Needs from Research

Library is Well-Liked and Utilized



“More...” Books, Programs, Events, Seating, Study Rooms



Building Maintenance Challenges



More Community Meeting Space is Needed



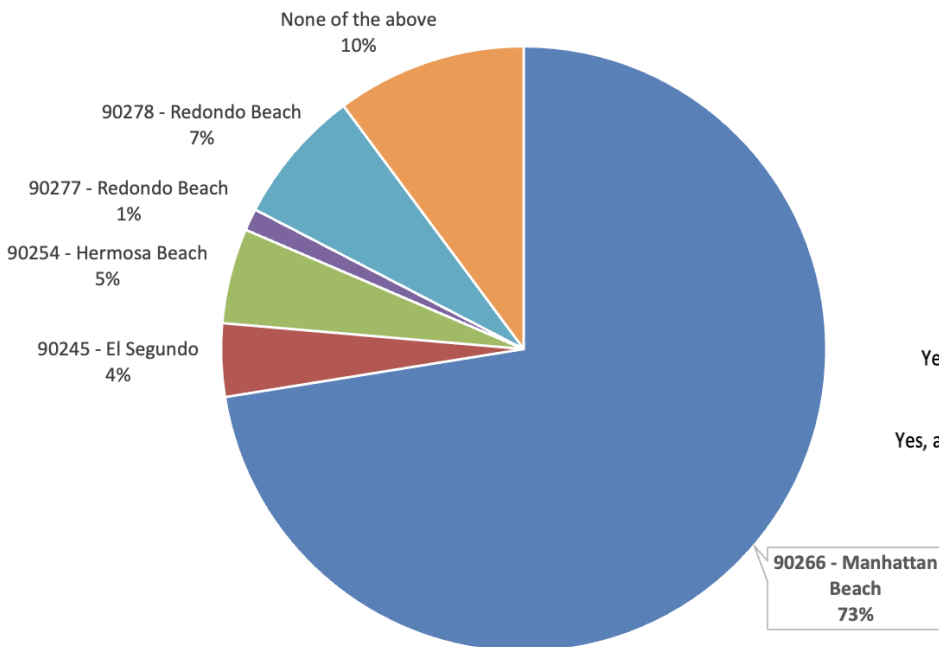
Limited Parking Affects Access



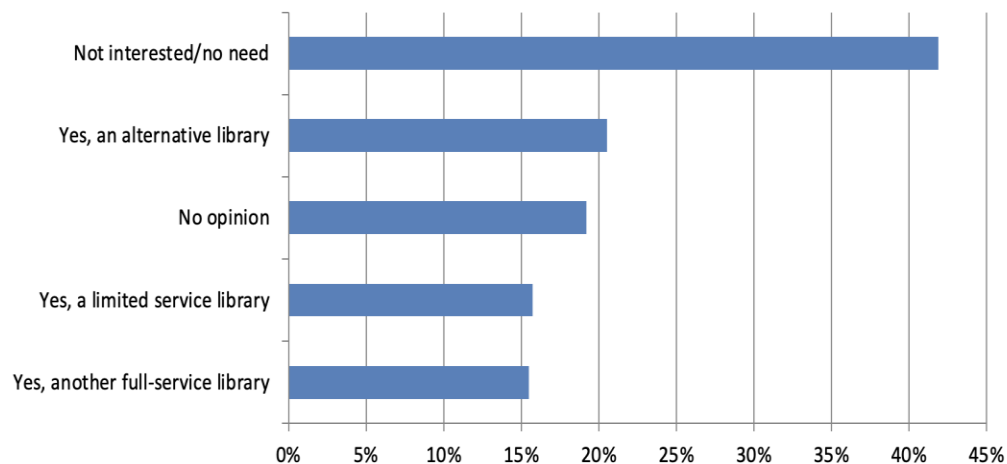
An Increasing Interest in Alternative Spaces

# Survey Results

What is your zip code?



Do you think there is a need for an additional library location in or near the City of Manhattan Beach?



## Top 3 "Very interested" in following new library spaces

- 36.5% Creative/fabrication lab space/makerspace
- 30.0% Demo/Learning kitchens
- 29.0% Demo/Learning garden

## Top 3 "Not interested" in following new library spaces

- 28.4% Audio/video/podcasting
- 25.2% Cafe
- 24.0% Bookmobile



# A Community's Vision for the Library

## Programs

- Develop dynamic, innovative and enriching programs that recognize a diverse community

## Spaces

- Provide flexible, functional and safe spaces for community to connect and engage

## Resources

- Contribute information, technology and cultural resources to the community

## Outreach

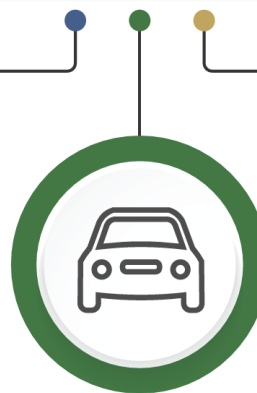
- Outreach to the community to facilitate access to resources and conversations

# Strategic Priorities for the Library

**MORE PROGRAMMING  
(& STAFFING)**



**FACILITY**



**PARKING ACCESS**



**OUTREACH**

## PRIORITY 1

### More programming

Programs should be developed that address different interests among those in the community. Adequate staffing levels should ensure that the library can manage increased programming needs.

#### STEPS WE CAN TAKE:

- Add more diverse programming, perhaps by partnering with other civic and community groups.
- Ensure that staffing can support the additional programming levels.
- Enhance staffing space in the library to accommodate additional staffing e.g., upgrade staff office space by utilizing personal lockers with shared desks.

## PRIORITY 2

### Maintain facility as a flagship library

The library should be maintained in top-notch condition to reflect its status as the County's flagship library.

#### STEPS WE CAN TAKE:

- Continue to work on replacement of furniture and upgrading HVAC system to make a comfortable space for library users.
- Develop a multi-functional outdoor space for additional study space, programming, and gatherings (including enhanced seating, audio visual capabilities, and ADA accessible).
- Investigate feasibility of utilizing existing space more effectively.
- Discuss the development of a future joint South Bay alternative library/community space with surplus funding and development of partnerships.

## PRIORITY 3

### Address Parking Limitations

The library has access issues due to limited parking availability in downtown Manhattan Beach and will need to partner with the City to develop improvements to parking availability for the library.

#### STEPS WE CAN TAKE:

- Partnership with the City and the Library over a possible development of joint-use parking structure available to library patrons in Manhattan Beach.
- The City should consider pursuing development of parking shuttle/community circular for Manhattan Beach downtown during peak times (with possible partnership with the Library).

## PRIORITY 4

### Increase community outreach

Community members should be made more aware of library offerings.

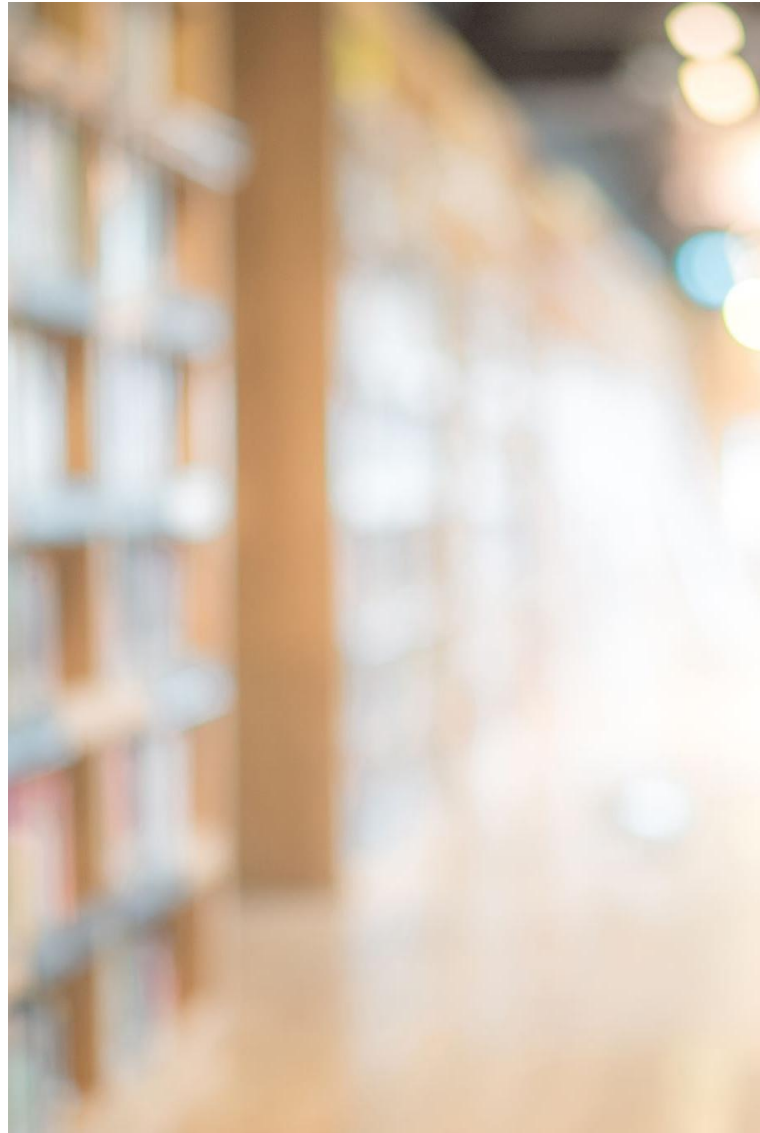
#### STEPS WE CAN TAKE:

- Partner with the City, MBUSD Public Information Officer, and other community and business members to disseminate information about the library.
- Continue to develop social media marketing presence.

# Spatial Assessment:

Are we meeting library  
guidelines for space?

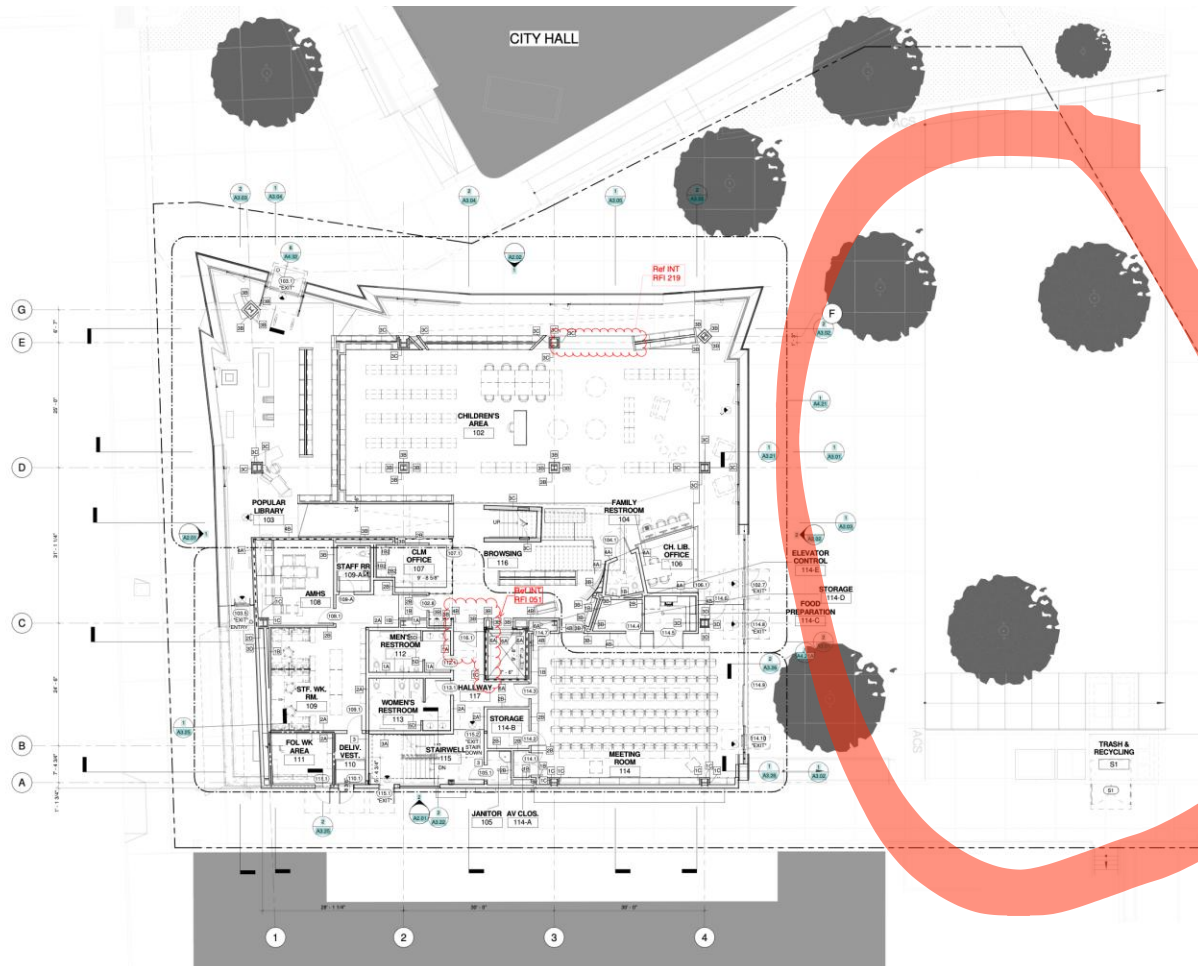
Do we have adequate  
space to do the things  
that we would like to do in  
the strategic priorities?



## Spatial Assessment: Recommendations

- Develop **outdoor patio space** for additional seating, programming, and community space.
- Consider adding to MBL's **collection**.
- Redesign **main entry** to improve user experience and improve security.
- **Reduce** the number of **public computer workstations**.
- Consider ways to **brighten the children's area**.
- Consider ways to address the outdoor environment's impact on **building maintenance**.
- Consider adding additional space for **group study**.
- Redesign **staff workspace** on the second floor to create a better working environment.

# MBL Outdoor Space



---

# Examples of Library Outdoor Spaces

## Fostering Community Engagement

Both indoor and outdoor spaces foster social interaction, engagement, and public access to valuable resources.

