



Power Reliability & SCE's 2016 Capital Improvement Program

City Council Meeting
May 17, 2016

Presentation Overview

- Background
- 2015 Circuit Reliability Report
- SCE's 2016-2017 Capital Improvement Plan
- Completion of El Porto Project (2015)

Background

- Duration and cause of outages
 - Grizzly and Piston Circuits
- Councilmember Lesser and Powell took lead
 - Participated in 3 meetings with SCE staff
 - Discussed Outage Communication Process
 - Customer Service

Background (cont.)

- SCE improved communication between City staff
 - Single email address to notify key City management personnel
 - SCE Outage Team improved communication with residents and businesses
 - In Case of Crisis App for City staff and Council
- SCE provided a detailed analysis on outage data for 2015
- SCE provided a 2016 Capital Improvement Plan map

Reliability Metrics

Momentary Outages:

Outages lasting 5 minutes or less

- **MAIFI:**
 - The number of times the average customer is interrupted by Momentary outages each year.

Sustained Outages:

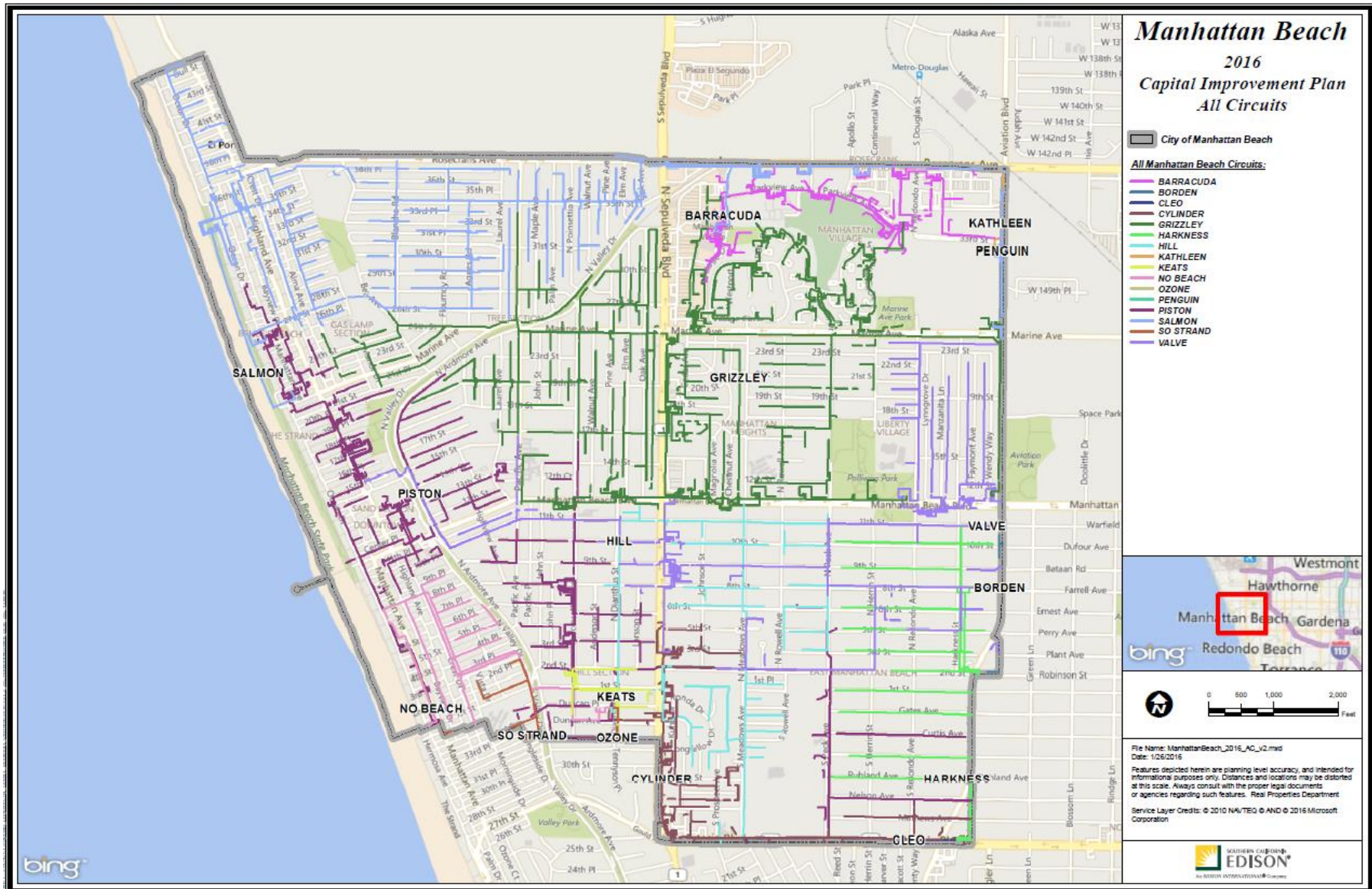
Outages lasting longer than 5 minutes

- **SAIFI:**
 - The number of times the average customer is interrupted by Sustained outages each year.
- **SAIDI:**
 - The cumulative amount of time the average customer is interrupted by Sustained outages each year.

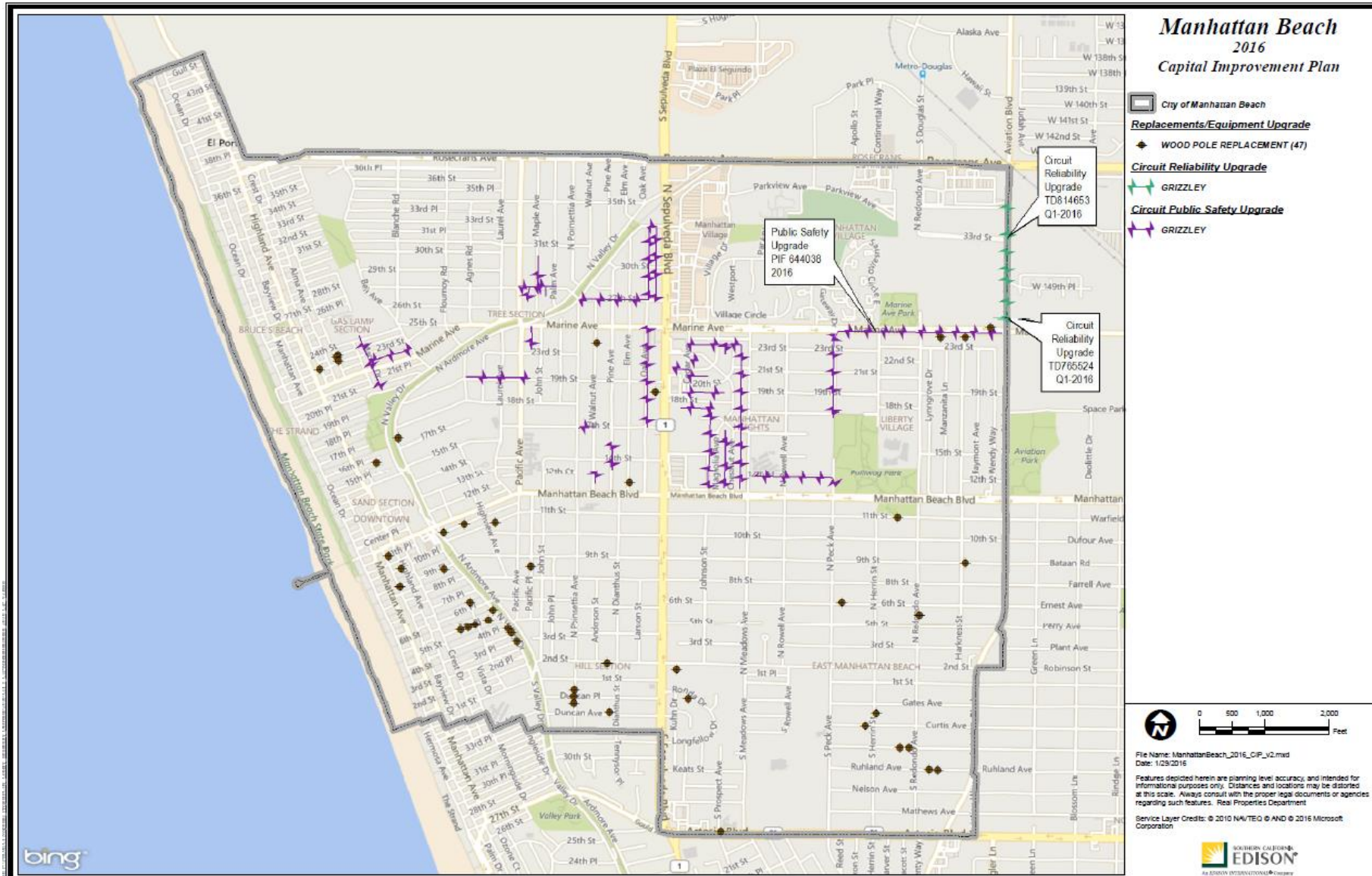
2016 Circuit Reliability Report

- SAIDI
 - South Bay District 164.07 (Rank 10th Worst)
 - Manhattan Beach 189.5
 - SCE System wide 102.6
- SAIFI
 - South Bay District 1.31 (Rank 8th Worst)
 - Manhattan Beach 1.7
 - SCE System wide 0.9
- Law of Averages Skew Numbers
 - “Grizzly” affected 10% of customers (SAIDI: , SAIFI 4.4) (CIP Project 2016)
 - “Piston” affects 17% of customers (SAIDI: 409.2, SAIFI 1.5)

SCE Circuits in Manhattan Beach



2016 SCE CIP Map



2016-2017 Projects

- Replace 47 Wood Poles (refer to map for details)
- Grizzly Circuit Upgrade
 - Complete Overhead Wire Rebuild Project
 - Underground Equipment and Cable Replacement
- Piston Circuit
 - Underground Equipment and Cable Replacement, Overhead Branch Line Fusing
- Branch Line Fusing (BLF)
 - Borden Circuit, Harkness, Piston, Valve, Penguin, Salmon, No Beach, Ozone, So Strand, Hill, Keats, Cylinder, Cleo

SCE Mobile App

Need to report an outage? Want to receive updates on an outage via text, or e-mail?

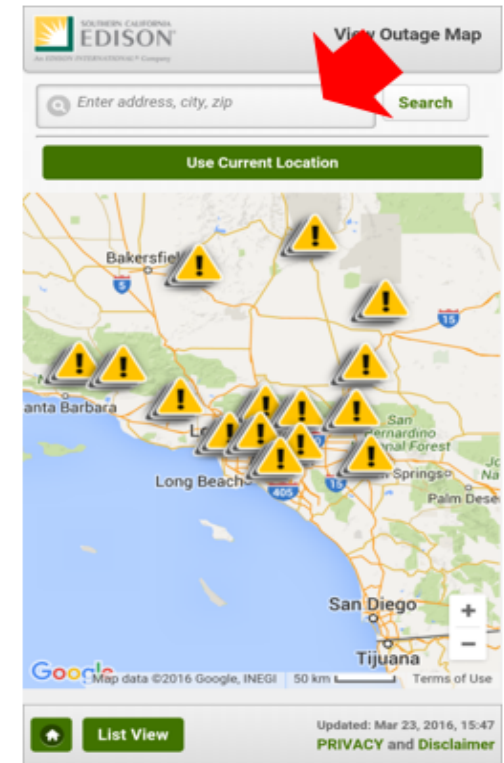
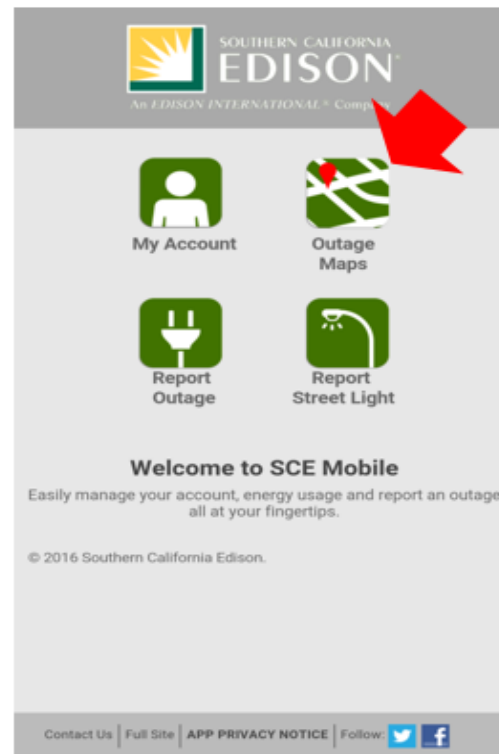
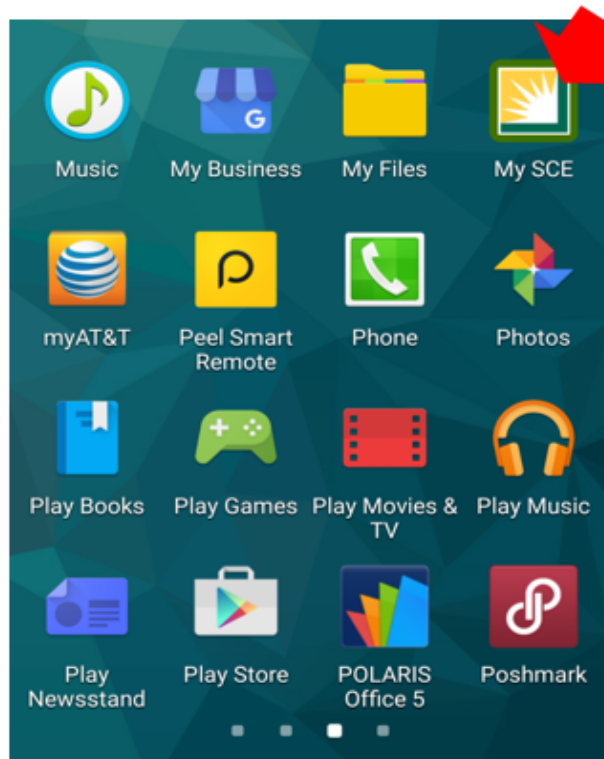
Download the App

Go to the App Store or Google Play and search for **SCE Outage App**

Download the app and then open it

24 Hour Outage Hotline:

800-611-1911



Thank You!