



CITY OF MANHATTAN BEACH

Aug. 16, 2016

Background

- » The safety of our customers, employees and communities we serve is SoCalGas' top priority.
- » As the nation's largest natural gas distribution utility, we're committed to providing clean, safe and reliable natural gas to our customers.
- » To get natural gas safely from California producers to you, we put significant resources towards improving the safety and integrity of our more than 101,000 miles of natural gas pipelines.



Southern
California
Gas Company



A Sempra Energy utility®

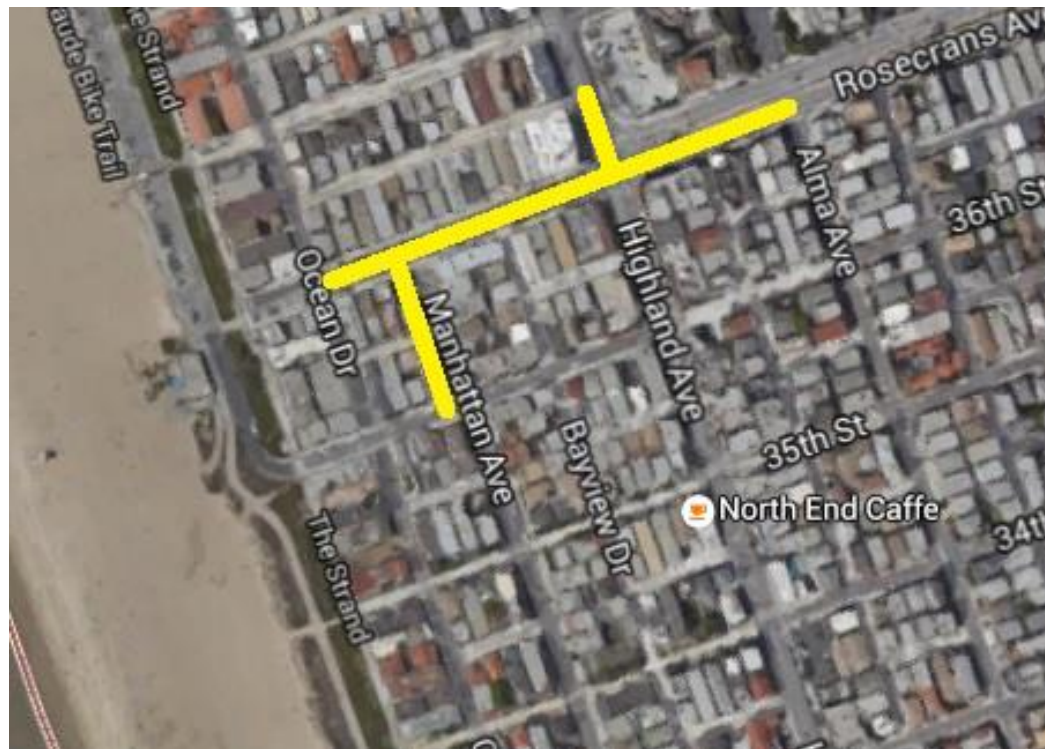
Upcoming SoCalGas Projects

- » Pipeline Replacement Project
 - Replacement of an existing pipeline

- » Loop Project
 - Installation of a new pipeline

Replacement Details

- » Segments of underground pipeline in Manhattan Beach have been identified for replacement due to age and condition.



Southern
California
Gas Company



A Sempra Energy utility®

Replacement Details

- » This proposed pipeline replacement will benefit Manhattan Beach with an upgrade and enhancement of the existing underground natural gas pipeline system.
- » On Rosecrans Avenue from Ocean Way to Alma Avenue, we will replace 3-inch steel main with 831 feet of 4-inch plastic main
- » On Highland Avenue from Rosecrans Avenue to Rosecrans Place, we will replace 2-inch steel main with 96 feet of 2-inch plastic main
- » On Manhattan Avenue from Rosecrans Avenue to 36th Street, we will replace 2-inch steel main with 268 feet of 2-inch plastic main

Loop Details



Southern
California
Gas Company



A Sempra Energy utility®

Loop Details

- » As our system is currently designed, only one pipeline serves the area. If we lose service to that line, e.g. when we need to conduct important maintenance and safety inspections, we do not have an alternate pipeline to maintain reliable service.
- » The new 2.8-mile, 20-inch pipeline will loop this pipeline and provide the needed reliability for customers in the area.
- » To accommodate upcoming city work at the intersection of Highland and Rosecrans avenues, a 1,500-foot section of the pipeline will be installed when the replacement project is completed at the intersection.
- » The remainder of the pipeline is scheduled to be installed in the first quarter of 2017. Construction is expected to take about 3 months.



What to Expect

- » Work to begin as soon as Sept. 6 and last approximately 11 weeks. (permitting weather and other factors)
- » Typical construction hours: Monday through Saturday 8:30 a.m. to 3:30 p.m. (subject to permit conditions and City approvals)



What to Expect

- » Temporary lane closures and parking restrictions
 - On Highland Avenue from 42nd Street to Rosecrans Avenue
 - On Rosecrans Avenue from Ocean Drive to about 300 feet east of Vista Drive
 - On Manhattan Ave from Rosecrans Avenue to 36th Street
- » Large trucks and equipment
- » Work-related noise
- » Possible excavation dust
- » Natural gas odor when venting gas

Community Outreach

- » Outreach to customers and local community/neighborhood groups
- » 2 weeks prior to construction: SoCalGas mails letter to customers near construction area
- » 2 days prior to day of construction mobilization: Notify first responders; Distribute door hanger to customers
- » Post installation: Communication of completion/results



Southern
California
Gas Company



A Sempra Energy utility®

SoCalGas Contacts

- » Faviola Ochoa
Public Affairs Manager
FaviOchoa@semprautilities.com
Tel: 213-244-2720
- » Dave Lauterio
Project Manager, Loop Project
DLauterio@semprautilities.com
213-244-3876
- » Max Montes
Field Operations Supervisor, Replacement Project
MAMontes@semprautilities.com
310-347-8921
- » Kristine Lloyd
Community Outreach Manager
klloyd@semprautilities.com
Tel: 213-244-4634
- » Customer Service 1-800-427-2000



Southern
California
Gas Company



Sempra Energy utility®