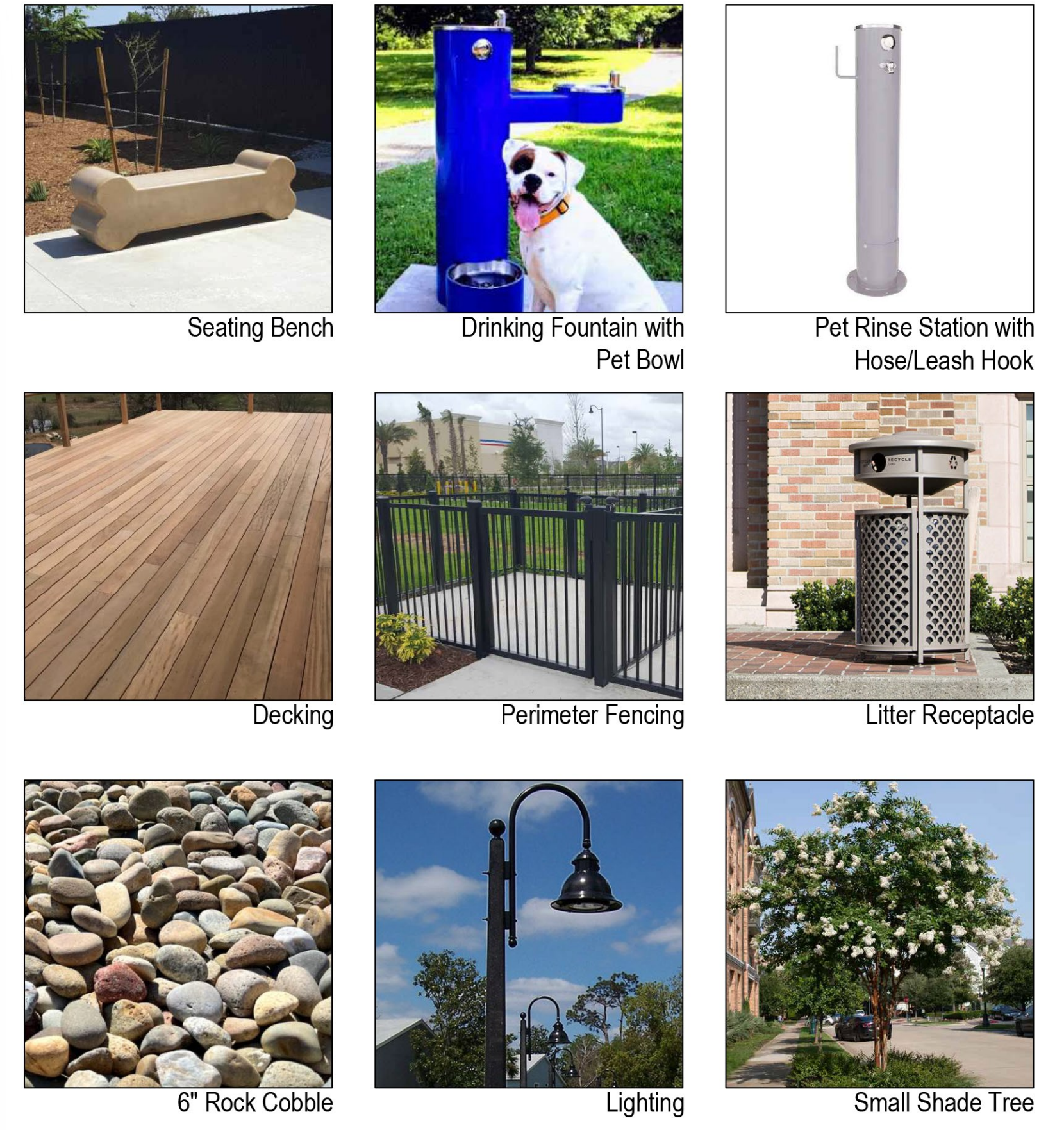


PROPOSED IMPROVEMENTS



OPTIONAL IMPROVEMENTS



DESIGN CONCEPT

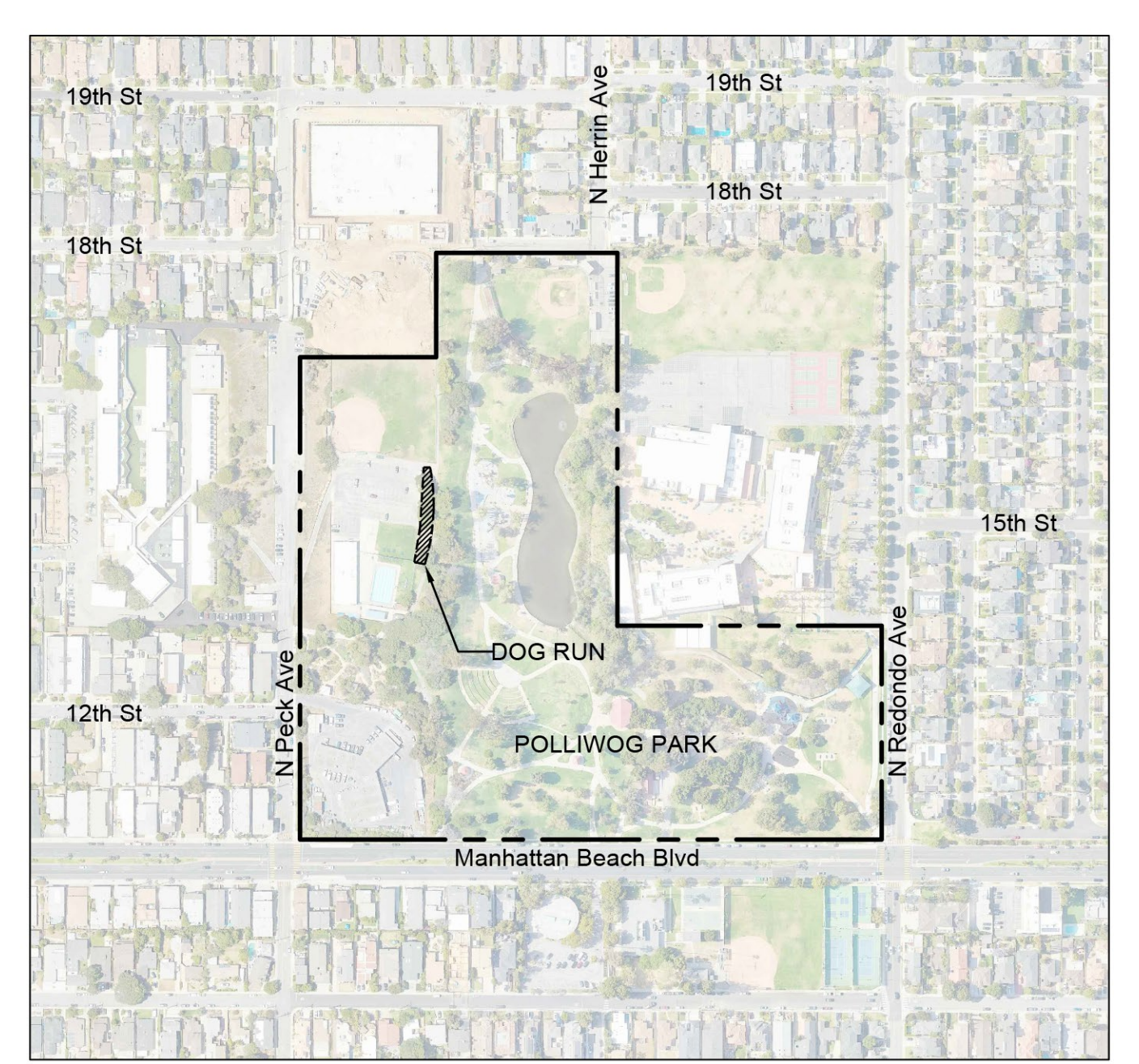
EXISTING DOG RUN AREA: 4,490 SF
 PROPOSED ADDITIONAL AREA: 1,350 SF
 NEW DOG RUN AREA: 5,840 SF

The Polliwog Park Dog Run in Manhattan Beach will gain 1,350 square feet of additional green space for dogs to run and play. This increase (roughly one-third of the Dog Run's existing size) is possible with the removal of several storage containers currently standing in the adjacent parking lot.

The storage containers narrow the entry to the Dog Run, as well as contribute to the uneven growth of the existing trees along the fence line. These trees provide ample shade, but it is recommended to remove those where the trunks are leaning to one side for safety considerations. Care should be taken to protect the existing trees that are growing upright and display healthy conditions.

Green space will be enhanced by planting new trees throughout the widened Dog Run area. Curved planting beds filled with round decorative rock cobble will soften the edges by the fencing. Benches will be placed near the trees and along the sidelines so the dogs have ample room to run and play. A new drinking fountain with pet bowl will be provided at the far end of the space for refreshment. A pet rinse station will be conveniently located at the gate access area so that dogs may be cleaned off before exiting the Dog Run. Pet waste dispensers and litter receptacles will be available at two locations within the space.

The new and improved Polliwog Park Dog Run will be a great amenity for the community. With the proposed features shown here, the space will be both beautiful and fun!

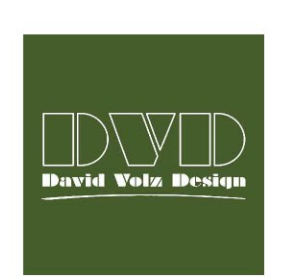
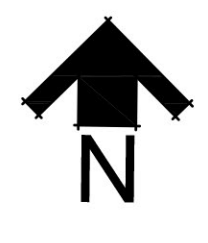
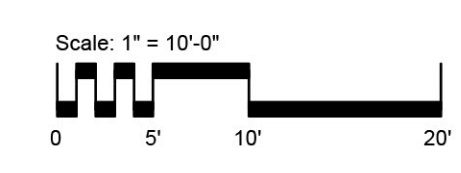


VICINITY MAP

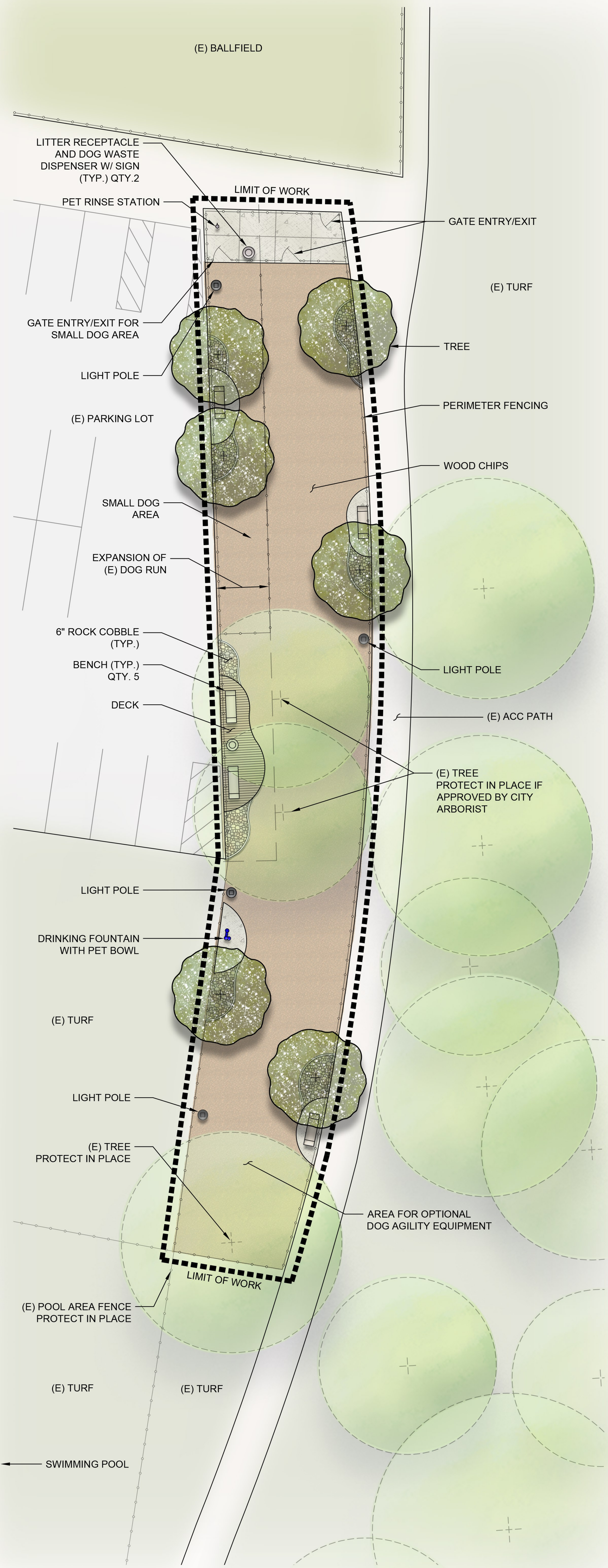
NTS

CONCEPT PLAN

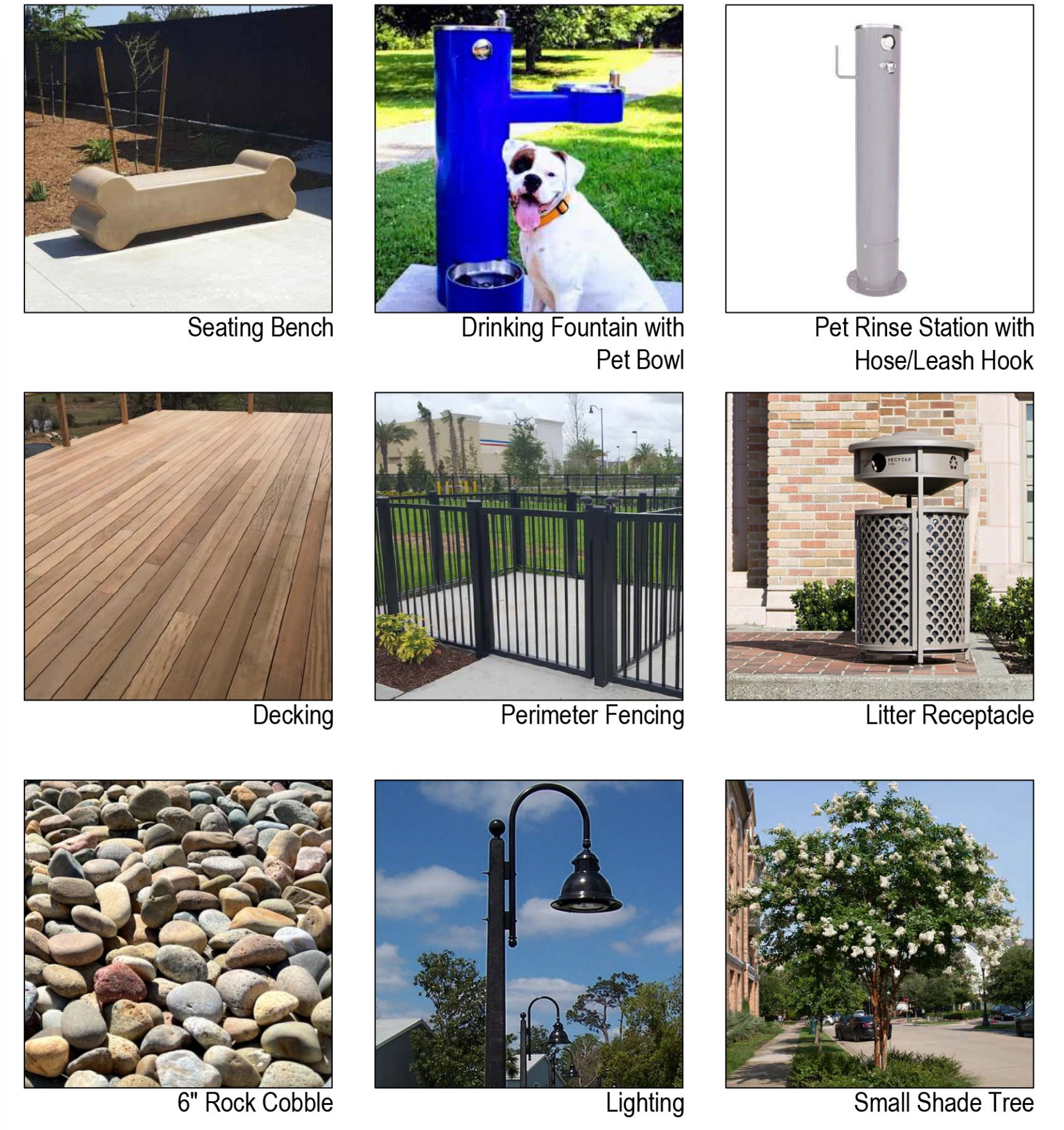
POLLIWOG PARK DOG RUN
 CITY OF MANHATTAN BEACH



MARCH 23RD 2024
 DVD@dvolzdesign.com



PROPOSED IMPROVEMENTS



OPTIONAL IMPROVEMENTS



DESIGN CONCEPT

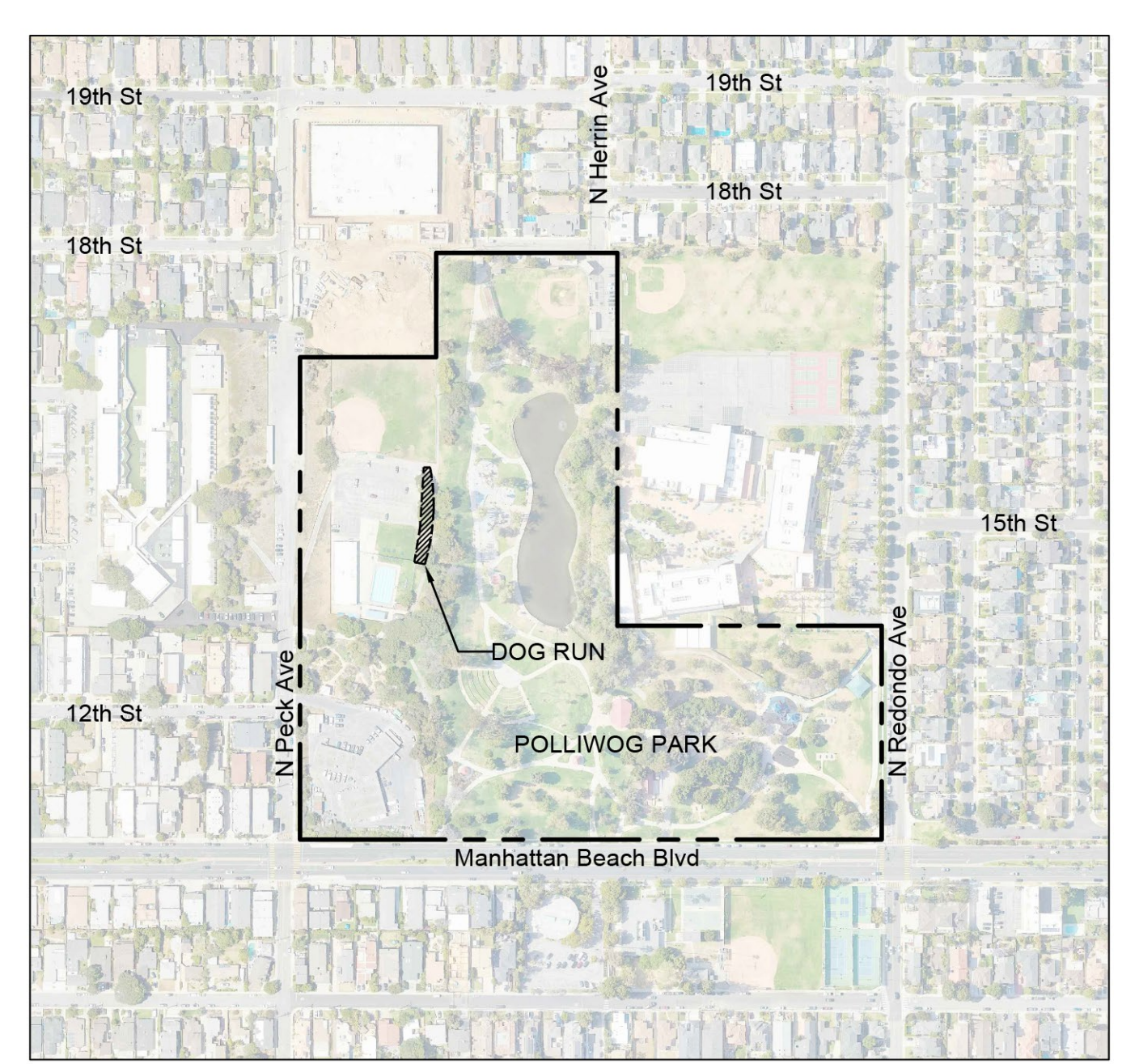
EXISTING DOG RUN AREA: 4,490 SF
 PROPOSED ADDITIONAL AREA: 1,350 SF
 NEW DOG RUN AREA: 5,840 SF

The Polliwog Park Dog Run in Manhattan Beach will gain 1,350 square feet of additional green space for dogs to run and play. This increase (roughly one-third of the Dog Run's existing size) is possible with the removal of several storage containers currently standing in the adjacent parking lot.

The storage containers narrow the entry to the Dog Run, as well as contribute to the uneven growth of the existing trees along the fence line. These trees provide ample shade, but it is recommended to remove those where the trunks are leaning to one side for safety considerations. Care should be taken to protect the existing trees that are growing upright and display healthy conditions.

Green space will be enhanced by planting new trees throughout the widened Dog Run area. Curved planting beds filled with round decorative rock cobble will soften the edges by the fencing. Benches will be placed near the trees and along the sidelines so the dogs have ample room to run and play. A new drinking fountain with pet bowl will be provided at the far end of the space for refreshment. A pet rinse station will be conveniently located at the gate access area so that dogs may be cleaned off before exiting the Dog Run. Pet waste dispensers and litter receptacles will be available at two locations within the space.

The new and improved Polliwog Park Dog Run will be a great amenity for the community. With the proposed features shown here, the space will be both beautiful and fun!

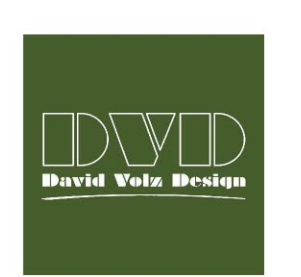
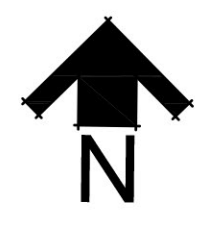
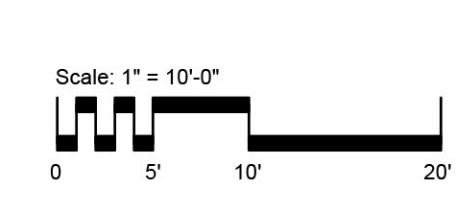


VICINITY MAP

NTS

CONCEPT PLAN ALTERNATIVE

POLLIWOG PARK DOG RUN
 CITY OF MANHATTAN BEACH



MARCH 23RD 2024
 DVD@dvolzdesign.com