

RESOLUTION NO. 25-0031

A RESOLUTION OF THE MANHATTAN BEACH CITY COUNCIL INITIATING PROCEEDINGS FOR THE LEVY AND COLLECTION OF ASSESSMENTS WITHIN MANHATTAN BEACH LANDSCAPING AND STREET LIGHTING MAINTENANCE DISTRICT NO. 99 FOR FISCAL YEAR 2025-2026 AND ORDERING THE PREPARATION OF AN ENGINEER'S REPORT PURSUANT TO THE PROVISIONS OF PART 2 OF DIVISION 15 OF THE STREETS AND HIGHWAYS CODE THE MANHATTAN BEACH CITY COUNCIL HEREBY FINDS, RESOLVES AND ORDERS AS FOLLOWS:

SECTION 1. Pursuant to the provisions of the Landscaping and Lighting Act of 1972, Part 2 of Division 15 of the Streets and Highways Code (commencing with Section 22500) (the "Act"), the Manhattan Beach City Council desires to initiate proceedings for the levy and collection of an assessment against parcels of property within an existing assessment district designated "Manhattan Beach Landscaping and Street Lighting Maintenance District No. 99" (the "District"), for fiscal year 2025-2026, commencing July 1, 2025, and ending June 30, 2026, to pay for the costs and expenses of the improvements described below in Section 4.

SECTION 2. The boundaries of the District are coterminous with the boundaries of the City of Manhattan Beach, with the exception of the area commonly known as Manhattan Village.

SECTION 3. The map describing the exterior boundaries of the District is attached as Exhibit A and is open for public inspection in the office of the City Clerk.

SECTION 4. The existing improvements may be briefly described as follows: Landscaping and appurtenant facilities generally include trees shrubs, plants, turf, irrigation systems, and necessary appurtenances including curbs, hardscape, monumentation, fencing, drainage detention facilities drainage structure (including percolation wells) located in public rights-of-way, medians, parkways, and/or easements adjacent to public rights-of-way, in and along major thoroughfares and certain designated primary and secondary arterials as defined in the General Plan's Infrastructure Element. Lighting and appurtenant facilities including poles, lighting fixtures, conduits and the necessary equipment to maintain, operate, service and replace a lighting system at designated intersections, in medians, parkways and adjacent to certain public facilities in and along certain streets, rights-of-way and designated lots.

SECTION 5. The City Council designates Harris and Associates as the engineer (the "Engineer") for the purpose of these proceedings and hereby authorizes and directs the Engineer to prepare and file with the City Clerk a

written report in connection with these proceedings in accordance with Article 4 (commencing with Section 22565) of Chapter 1 of the Act, which report shall contain the following:

- A. Plans and specifications for the improvements, which shall indicate the class and type of improvements to be provided for each zone.
- B. An estimate of the costs of the improvements for the 2025-2026 fiscal year, including all of the following:
 - 1. the total cost of the improvements, including all incidental expenses;
 - 2. the amount of any surplus or deficit in the Improvement Fund for the District to be carried over from the 2024-2025 fiscal year;
 - 3. the amount of any contributions to be made from sources other than the assessments levied pursuant to the Act; and
 - 4. the net amount to be assessed upon assessable lands with the District, being the total cost of the improvements, increased or decreased as the case may be, by any surplus, deficit or contributions.
- C. A diagram for the District showing all of the following:
 - 1. the exterior boundaries of the District;
 - 2. the boundaries of any zones within the District; and
 - 3. the lines and dimensions of each lot or parcel of land within the District.

Each lot or parcel shall be identified by a distinctive number or letter. The lines and dimensions of each lot or parcel shown on the diagram shall conform to those shown on the County Assessor's Maps for the 2025-2026 fiscal year. The diagram may refer to the County Assessor's Maps for a detailed description of the lines and dimensions of any lots or parcels, in which case those Maps shall govern for all details concerning the lines and dimensions of those lots or parcels.

- D. An assessment of the estimated costs of the improvements for the 2025-2026 fiscal year, which shall do all of the following:
 - 1. state the net amount to be assessed upon assessable lands within the District;
 - 2. describe each assessable lot or parcel of land within the District; and
 - 3. assess the net amount upon all assessable lots or parcels of land within the District by apportioning the amount among the several lots or parcels in proportion to the estimated benefits to be received by each lot or parcel from the improvements. The assessment may refer to the County assessment roll for a description of the lots and parcels, in which case the roll shall govern for all details concerning the description of the lots or parcels.

ADOPTED on April 1, 2025.

AYES:
NOES:
ABSENT:
ABSTAIN:

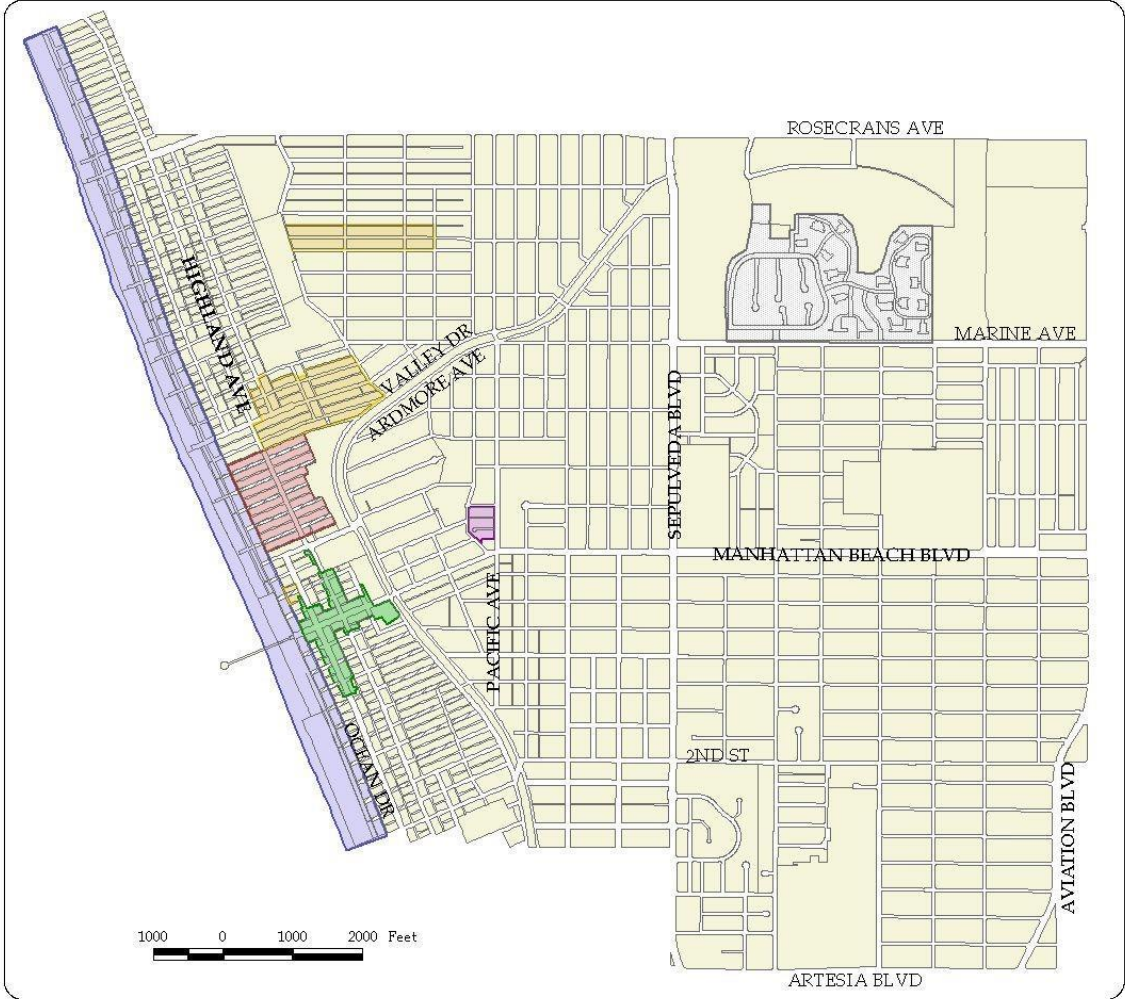
AMY THOMAS HOWORTH
Mayor

ATTEST:

LIZA TAMURA
City Clerk

Exhibit A

City of Manhattan Beach
Lighting and Landscape Assessment Districts



		Total Area (Acres)
Zone 1	General	2231.7
Zone 5	Gas Lights	39.0
Zone 6	The Strand	127.5
Zone 7	Walkway Streets	25.7
Zone 9	Arbolado Tract	2.9
Zone 10	Downtown Streetscape	15.4
	Excepted	82.5



August 2001

