

# CITY OF MANHATTAN BEACH

## **SIGNAGE AND WAYFINDING MASTER PLAN**

SEPTEMBER 2019



**selbert perkins design collaborative**

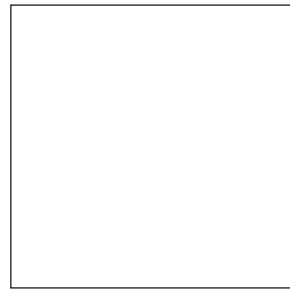
432 Culver Boulevard, Playa Del Rey, CA 90293

T 310 822 5223 [www.selbertperkins.com](http://www.selbertperkins.com)

## COLORS AND MATERIALS



**P1**  
DARK GRAY  
Exterior grade satin acrylic polyurethane paint



**P2**  
WHITE  
Exterior grade satin acrylic polyurethane paint



**P3**  
BLUE  
Exterior grade satin acrylic polyurethane paint



**M1**  
CUSTOM WOOD PRINT  
Highly durable embedded graphic onto powder coated surface.

## FONTS

ABCDEFGHIJKLMNOPQRSTUVWXYZ

abcdefghijklmnopqrstuvwxyz

0123456789

SPARTAN MB – LIGHT

ABCDEFGHIJKLMNOPQRSTUVWXYZ

abcdefghijklmnopqrstuvwxyz

0123456789

SPARTAN MB – SEMIBOLD

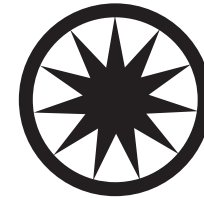
ABCDEFGHIJKLMNOPQRSTUVWXYZ

abcdefghijklmnopqrstuvwxyz

0123456789

SPARTAN MB – BOLD

## SYMBOLS



SUN



SEA GULLS



BEACH UMBRELLA



PALM TREE



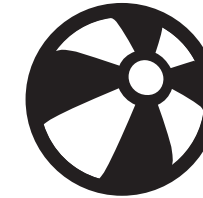
FLIP FLOPS



FEMALE SURFER



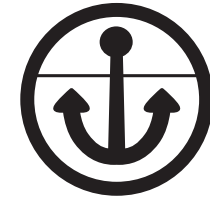
MALE SURFER



BEACH BALL



FISH



ANCHOR



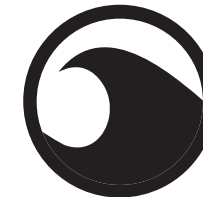
VOLLEYBALL



PIER



WAVES 1



WAVES 2



SAIL BOAT



CUT OUT CITY LOGO



PARKING



CITY LOGO



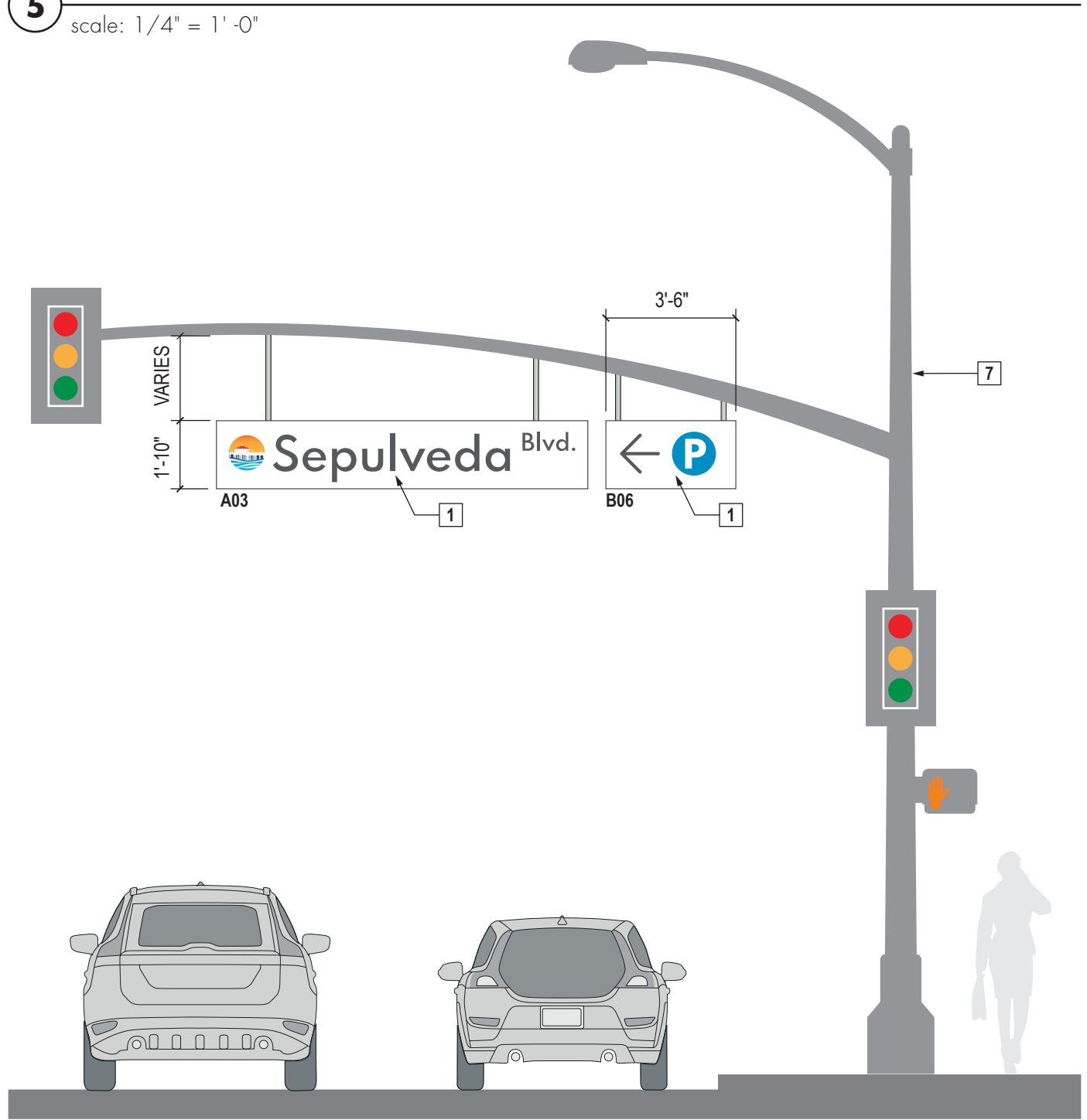
PEDESTRIAN



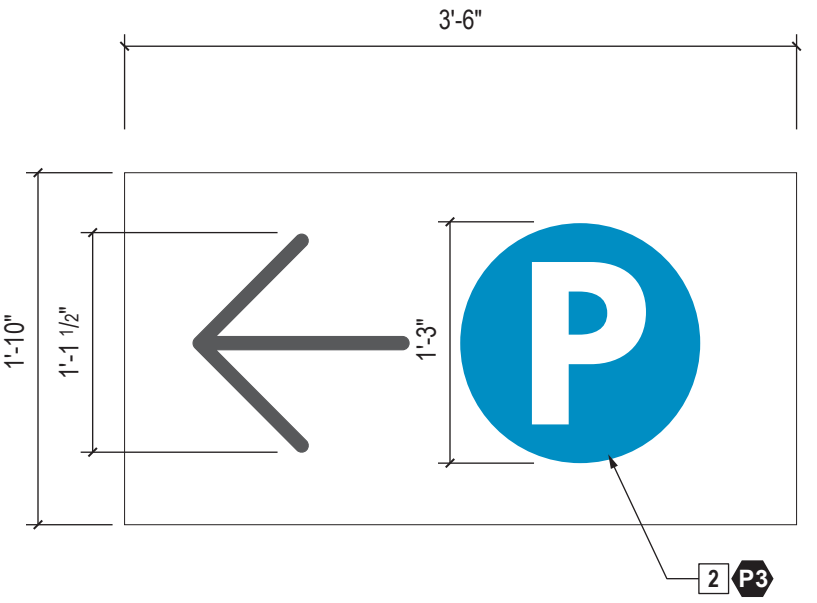
ARROW



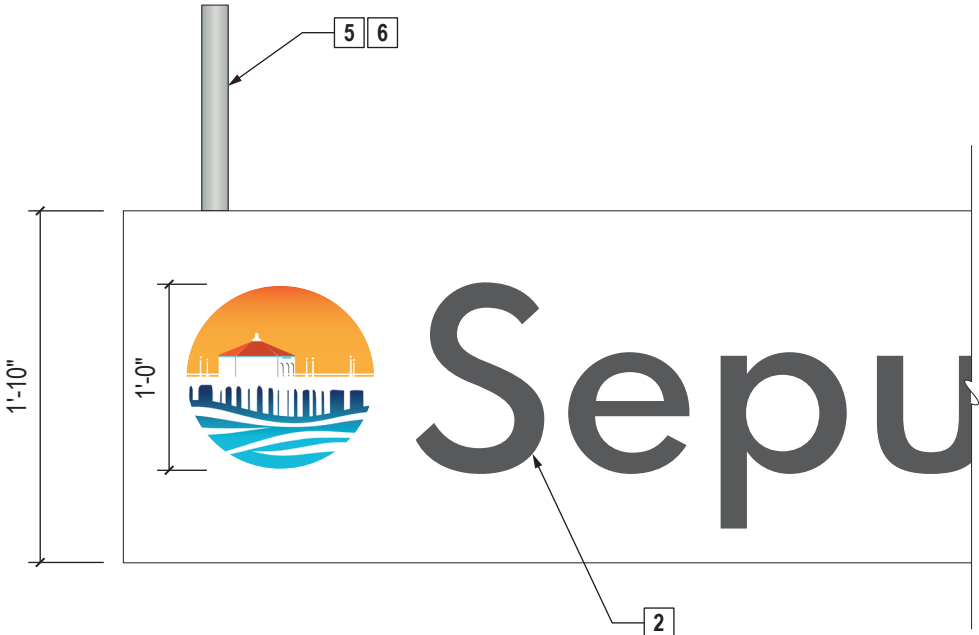
**5 PLAN VIEW**  
scale: 1/4" = 1'-0"



**1 CONTEXT ELEVATION**  
Scale: 1/4" = 1'-0"

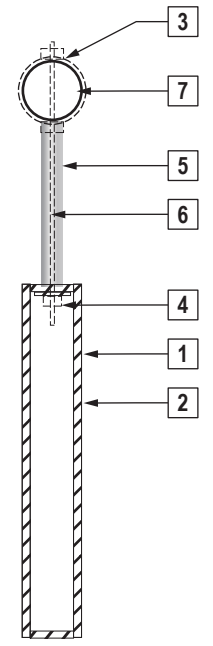


**4 FRONT ELEVATION**  
scale: 1" = 1'-0"

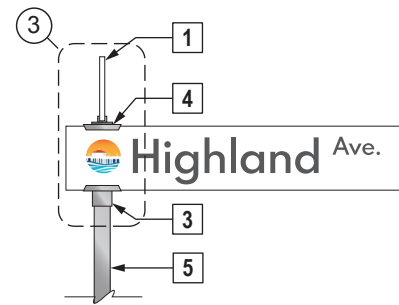


**2 FRONT ELEVATION**  
scale: 1" = 1'-0"

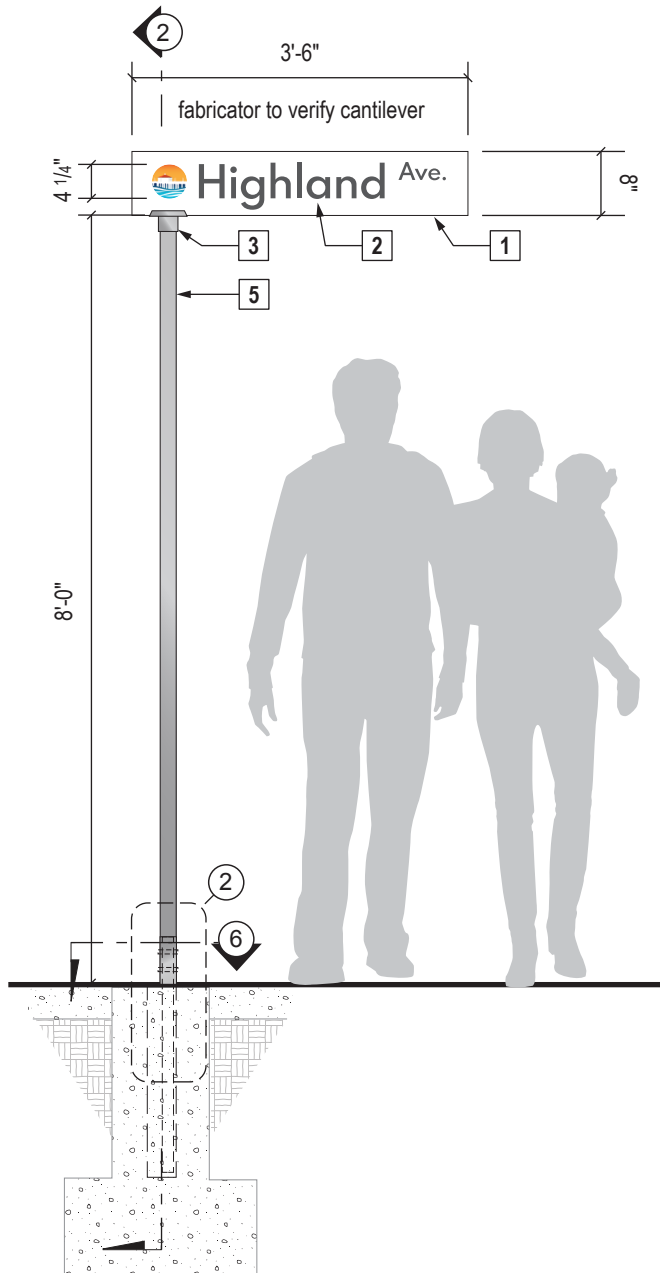
- NOTES**
1. SIGN PANEL: Fabricated 1/8" thick aluminum box; closed all sides; primed and painted; ease all exposed edges.
  2. GRAPHICS: Surface applied electrocut reflective graphics or print with 3M outdoor digital inks.
  3. BRACKETS: Provide fabricated aluminum adjustable bracket or attachment. Secure sign support bracket to existing lamp post per structural engineering.
  4. BOLTS: Secure with mechanical fasteners.
  5. TUBE: Stainless steel tube cover.
  6. SUPPORT: Provide s.s. cable attachment or approved equal.
  7. LIGHT POST: Existing city light post by others.
- GENERAL NOTES**
- MESSAGES, MEASUREMENTS & LOCATIONS: Sign Contractor to confirm all messages, field verify all measurements, and determine final sign locations with owner prior to creating shop drawings.
- See Appendix page 33 for additional sign details.



**3 TYPICAL SIDE SECTION**  
scale: 1" = 1'-0"

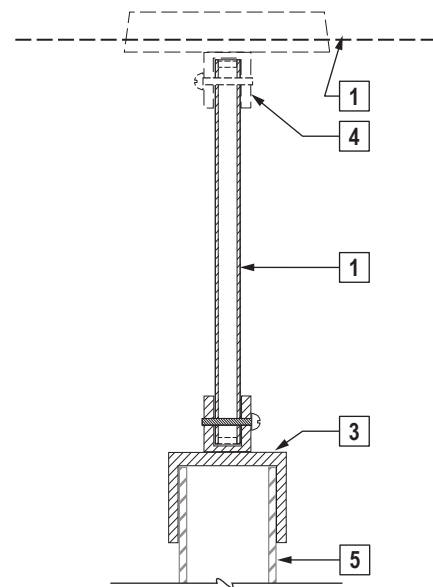


**FRONT ELEVATION - DOUBLE PANEL**



**1 FRONT ELEVATION - SINGLE PANEL**

Scale: 1/2" = 1'-0"



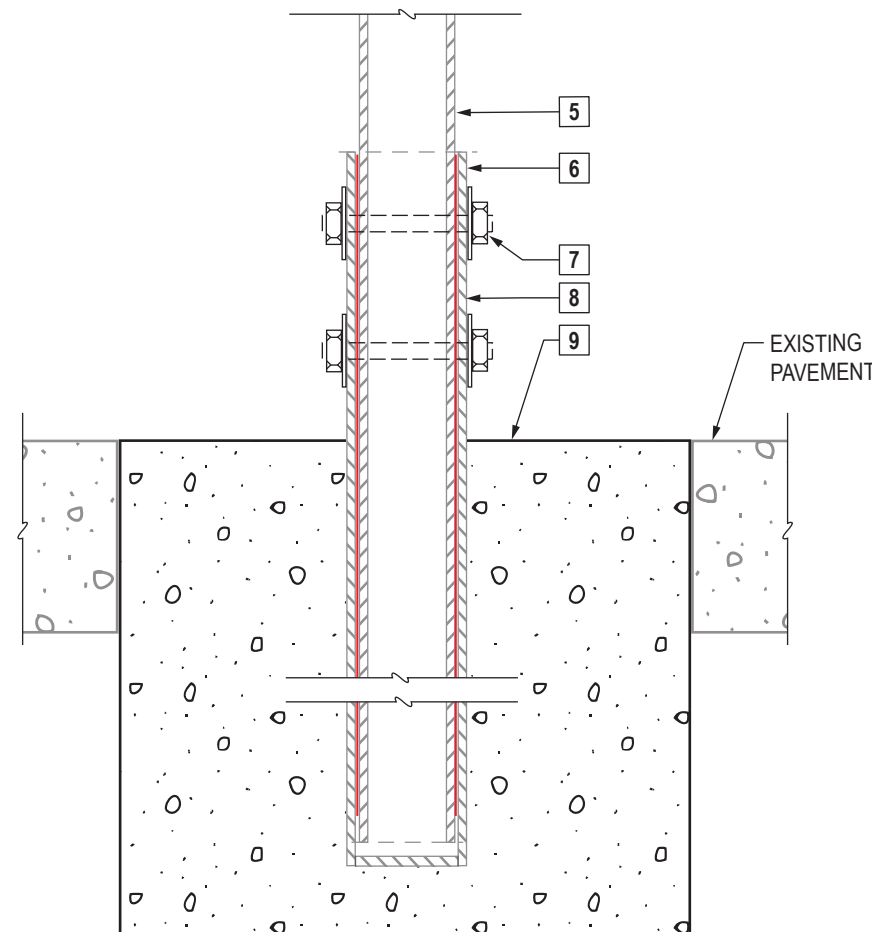
**6 SECTION DETAIL AT SIGN**

Scale: 3" = 1'-0"



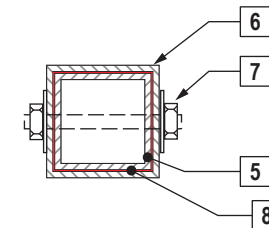
**7 EXISTING CONDITIONS**

NTS



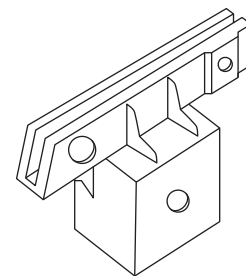
**2 SECTION DETAIL AT FOOTING**

Scale: 3" = 1'-0"



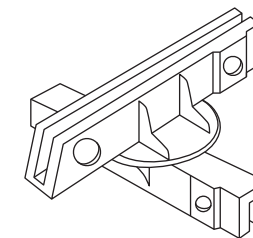
**5 PLAN SECTION DETAIL AT BASE**

Scale: 3" = 1'-0"



**3 SQUARE POST BRACKET**

NTS



**4 90° CROSS SEPARATOR**

NTS

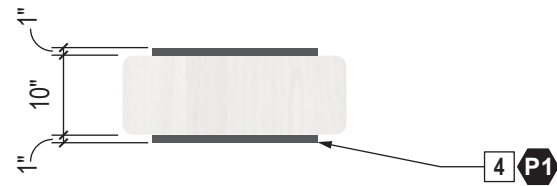
**NOTES**

1. SIGN PANEL: Fabricated (1/8" thick /verify) aluminum panel; primed and painted finish. Apply graffiti-resistant coating to all exposed surfaces; ease all exposed edges. Include aluminum frame as required. Final panel depth must match bracket slot.
2. GRAPHICS: Surface applied electrocut reflective graphics or print with 3M outdoor digital inks.
3. SQUARE POST BRACKET: Fabricated / extruded aluminum bracket with slot to accept sign panel / to cap post. Secure sign support bracket to post / s.s. bolt as required per structural engineering.
4. 90° CROSS SEPARATOR / WHEN REQUIRED: Fabricated / extruded aluminum bracket with slots to accept second sign panel / to stack two panels perpendicularly. Bolt to lower sign panel per illustration.
5. POST: 2" square aluminum pole; primed and painted finish. Apply graffiti-resistant coating to all exposed surfaces; ease all exposed edges. Use existing infrastructure when applicable.
6. POST SLEEVE: Stainless steel sleeve embedded into concrete to accept sign post. Isolate dissimilar metals.
7. BOLTS: Secure with mechanical fasteners / s.s. bolts.
8. GASKET: Provide seal to protect post as required.
9. FOUNDATION: Provide below-grade reinforced concrete footing and structural attachment per engineering.

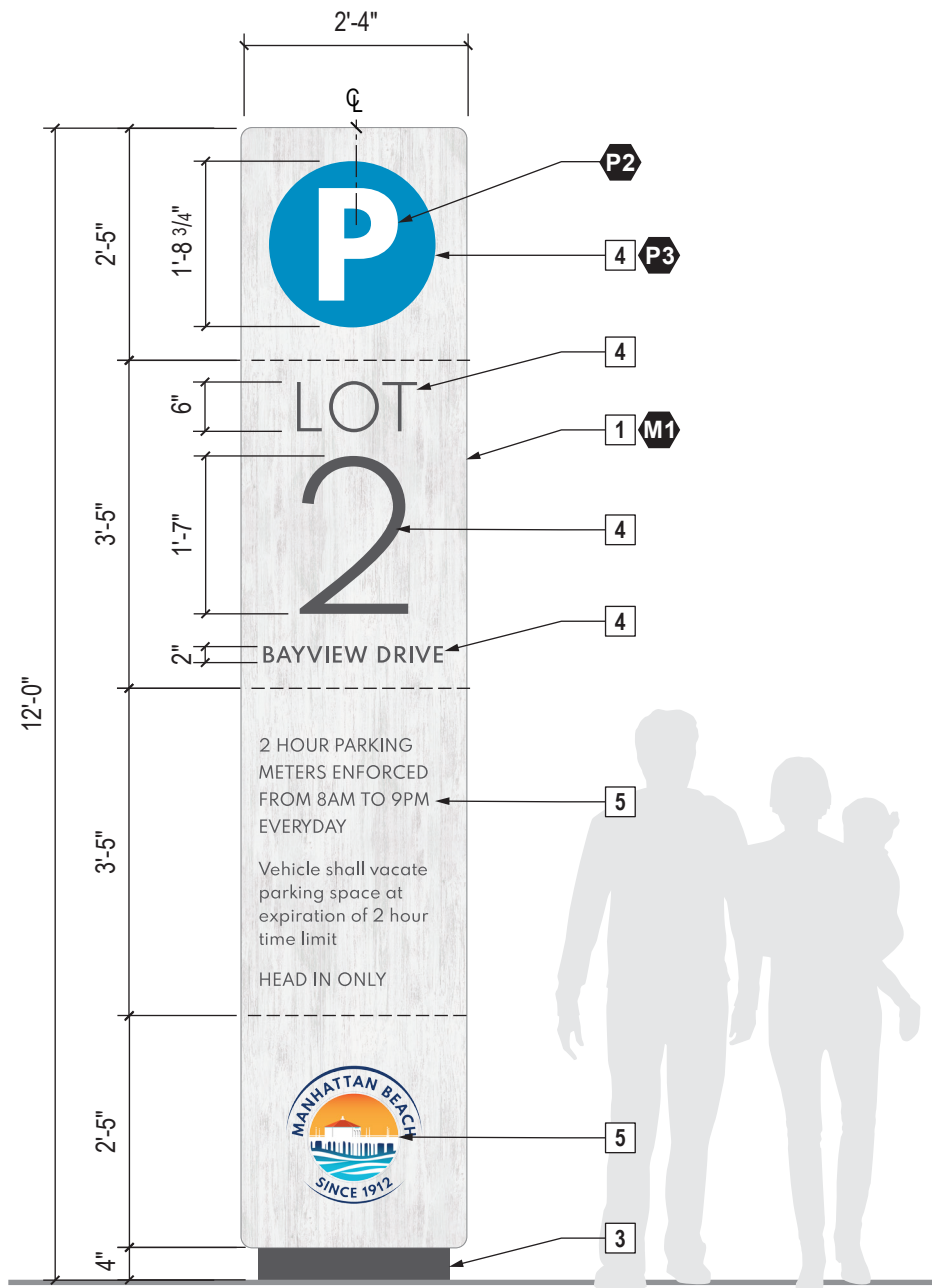
**GENERAL NOTES**

MEASUREMENTS & LOCATIONS: Sign Contractor to field verify all measurements and final sign locations with owner prior to creating shop drawings.

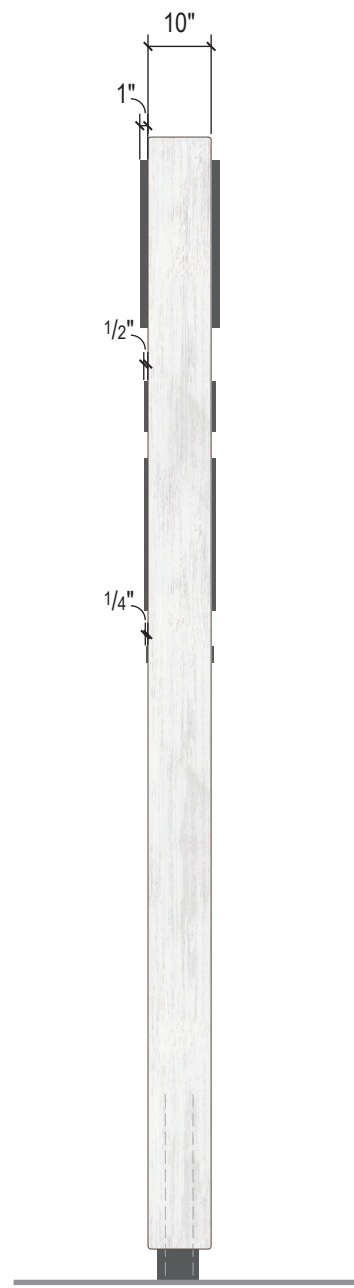
See Appendix page 34 for additional sign details.



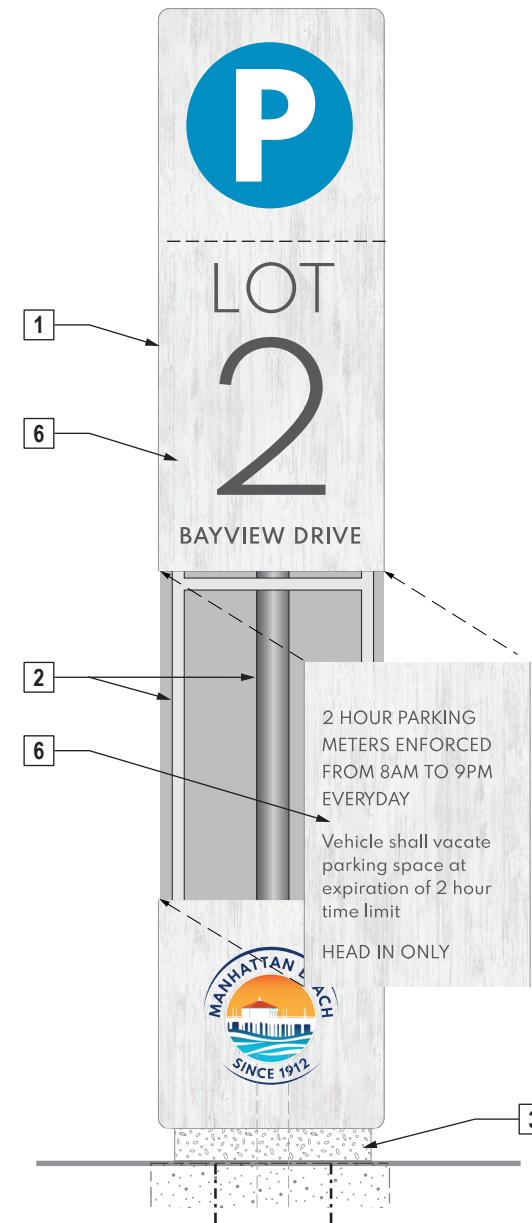
**4 PLAN VIEW**  
scale: 1/2" = 1' -0"



**1 FRONT ELEVATION**  
scale: 1/2" = 1' -0"



**2 SIDE VIEW**  
scale: 1/2" = 1' -0"



**3 ISOMETRIC ASSEMBLY**  
scale: 1/2" = 1' -0"

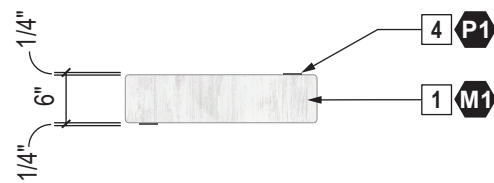
**NOTES**

1. SIGN CABINET: New fabricated aluminum sign cabinet with custom wood print to be highly durable embedded graphic onto powder coated surface. High pressure laminate is not an acceptable substitute.
2. STRUCTURE: The sign support structure, including the interface with the footing/foundation, shall be designed by the fabricator's structural engineer. For vertical pylons of certain height, main support is schedule 40 steel pipe embedded into concrete foundation.  
  
Coordinate with City for final location and foundation.
3. BASE: Concrete pad at base; sub-grade concrete foundation as required; prime and paint.
4. LETTERS/SYMBOLS: 1/4" thick cut-out Lexan; primed and painted finish; stud-mount to cabinet; reinforce with silicone adhesive.
5. LOGO/PARKING REGULATIONS: Logo and copy is part of Direct Embed print. If not Direct Embed, logo and copy to be surface applied silk-screened graphic.
6. CHANGEABLE PANELS: Center panels to be changeable to update messaging as required.

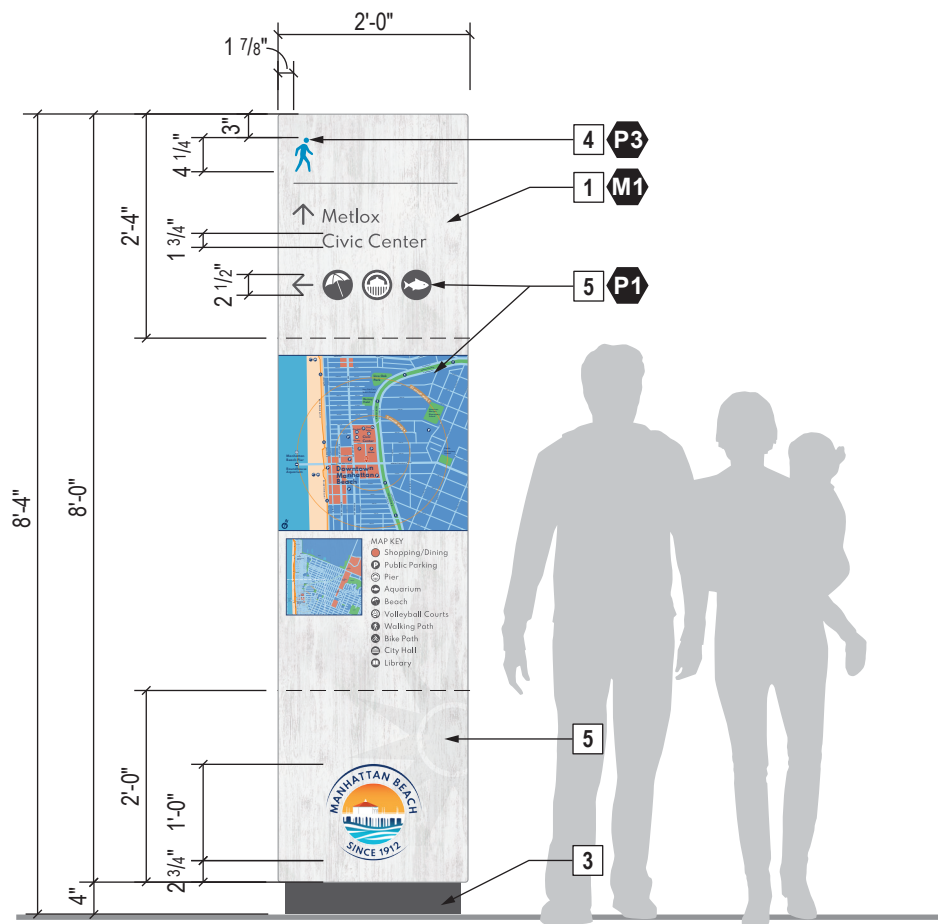
**GENERAL NOTES**

MESSAGES, MEASUREMENTS & LOCATIONS: Sign Contractor to confirm all messages, field verify all measurements, and determine final sign locations with owner prior to creating shop drawings.  
See Appendix page 35 for additional sign details.





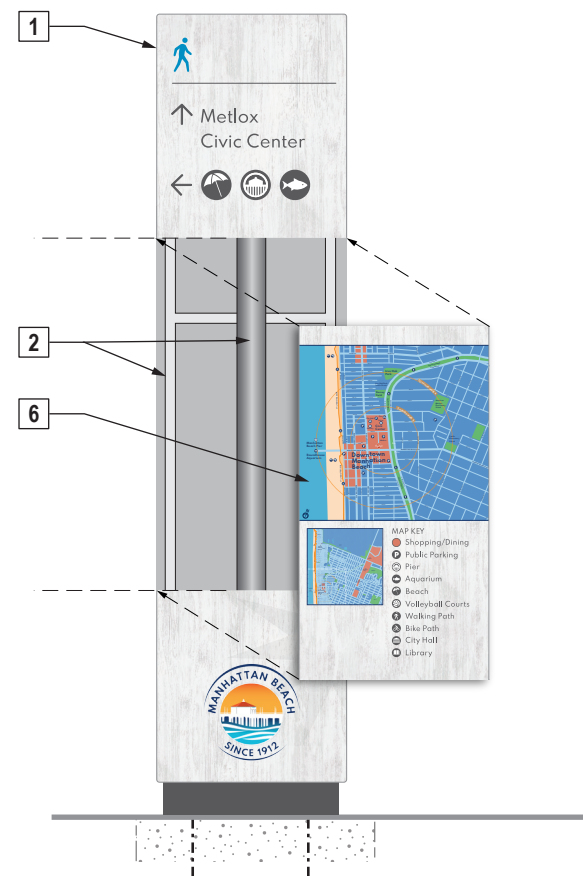
**4 PLAN VIEW**  
scale: 1/2" = 1' -0"



**1 FRONT ELEVATION - POST MOUNTED**  
scale: 1/2" = 1' -0"



**2 SIDE VIEW**  
scale: 1/2" = 1' -0"



**3 ISOMETRIC ASSEMBLY**  
scale: 1/2" = 1' -0"

**NOTES**

1. SIGN CABINET: New fabricated aluminum sign cabinet with custom wood print to be highly durable embedded graphic onto powder coated surface. High pressure laminate is not an acceptable substitute.
2. STRUCTURE: The sign support structure, including the interface with the footing/foundation, shall be designed by the fabricator's structural engineer. For vertical pylons of certain height, main support is schedule 40 steel pipe embedded into concrete foundation.  
  
Coordinate with City for final location and foundation.
3. BASE: Concrete pad at base; sub-grade concrete foundation as required; prime and paint.
4. LETTERS/SYMBOLS: 1/4" thick cut-out Lexan; primed and painted finish; stud-mount to cabinet; reinforce with silicone adhesive.
5. COPY/ICONS/MAP: Copy, icons and map are part of custom print. If not on print, copy and icons to be surface applied silk-screened graphics. Icons may vary depending upon location around City. Refer to symbols on page 14 for additional artwork.
6. CHANGEABLE PANELS: Map and message panels to be changeable to update as required. Map panel to be part of custom print.

**GENERAL NOTES**

MESSAGES, MEASUREMENTS & LOCATIONS: Sign Contractor to confirm all messages, field verify all measurements, and determine final sign locations with owner prior to creating shop drawings.  
See Appendix page 38 for additional sign details.