

# Consideration of Sepulveda Boulevard Traffic Safety Study and Potential Safety Measures

City Council Regular Meeting – May 5, 2026



# Background

- State Highway (SR-1), six lane regional arterial roadway
- 10 signalized / 20 unsignalized intersections
- Fatal pedestrian collision December 16, 2024
- Fatal motorist collision, January 8, 2025
- Fatal pedestrian collision May 4, 2025
- City Council directed staff to conduct study – 5/20/2025
- City/Caltrans Safety Analysis 6/2025 – 2/2026
- PPIC Meeting – March 6, 2026



# Immediate Actions

- Increased traffic and speed enforcement (Enforcement)
- Deployed surveillance cameras (Enforcement)
- Conducted DUI checkpoint – July 2025 (Education)
- Deployed educational message boards (Education)
- Posted social media safety awareness info. (Education)
- Purchased two speed feedback signs (Engineering)
- Initiated comprehensive safety analysis on Sepulveda Bl.



# Safety Analysis

- Utilized Latest Safety Analysis Guidelines
- Caltrans/City Field Meeting 7/6/2025
- Existing Conditions Inventory
- Current Speed Survey
- Crash History Analysis
- Review of Proven Safety Countermeasures
- Potential Safety Measure Evaluation



# Engineering and Traffic Survey – 2023

- Length – 2 miles
- Traffic Volume – 41,500 to 56,000 vehicles per day
- Speed Limit – 35 MPH

SEGMENT	85 <sup>TH</sup> %TILE SPEED		10 MPH PACE	
	NB	SB	NB	SB
Artesia Blvd. to Longfellow Ave.	37	34	28-37	26-35
Longfellow Ave. to 2 <sup>nd</sup> St.	31	39	22-31	30-39
2 <sup>nd</sup> St. to 8 <sup>th</sup> St	37	34	26-35	25-34
8 <sup>th</sup> St. to Manhattan Beach Blvd.	41	39	32-41	30-39
Manhattan Beach Blvd. to Marine Ave.	39	40	27-36	31-40
Marine Ave. to Rosecrans Ave.	39	38	26-35	29-38



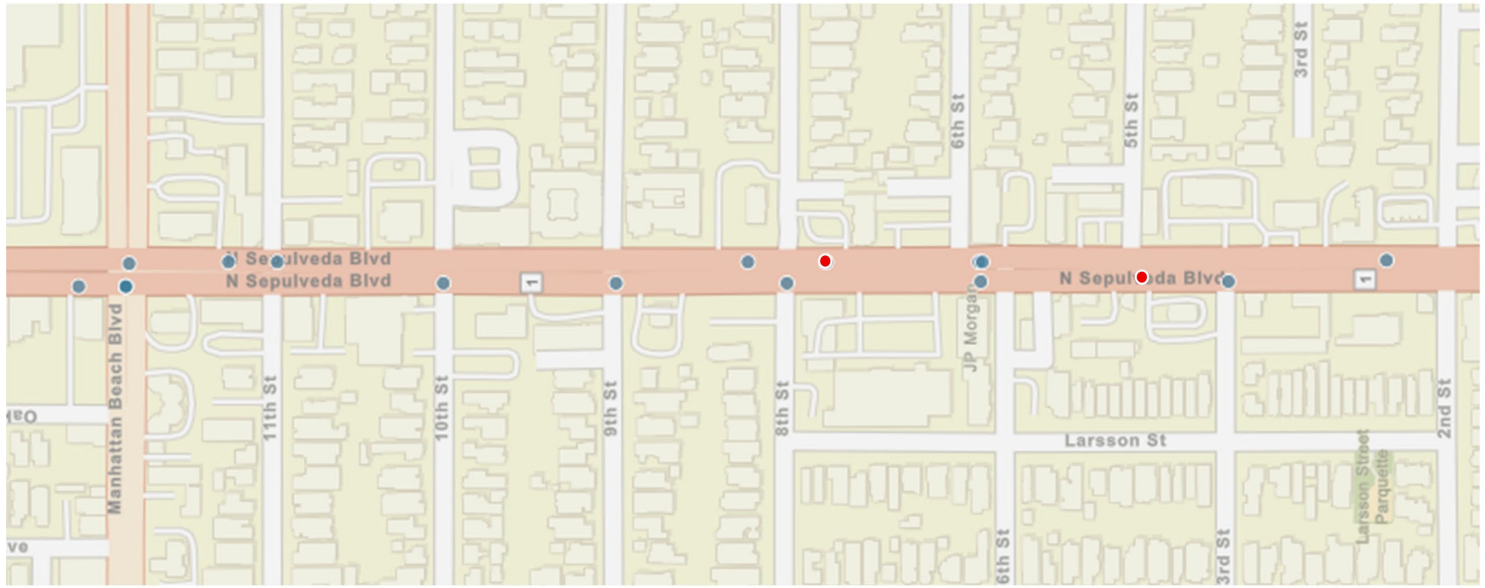
# Crash History

SEGMENT	FATAL AND INJURY CRASHES					
	2021	2022	2023	2024	2025*	Ave.
Artesia Blvd. to Longfellow Ave.	3	3	3	2	0	2.31
Longfellow Ave. to 2 <sup>nd</sup> St.	0	2	0	0	3	0.63
2 <sup>nd</sup> St. to 8 <sup>th</sup> St	1	1	1	2	2	1.47
8 <sup>th</sup> St. to Manhattan Beach Blvd.	2	2	2	1	1	1.68
Manhattan Beach Blvd. to Marine Ave.	4	1	6	3	6	4.21
Marine Ave. to Rosecrans Ave.	3	4	6	3	2	3.79
<b>TOTAL</b>	<b>13</b>	<b>13</b>	<b>18</b>	<b>11</b>	<b>14</b>	<b>14.53</b>
Fatal	0	0	0	1	2	0.63
# Injured	24	18	28	12	19	21.26
Pedestrian	1	1	3	2	3	2.10
Bicycle	2	1	1	0	2	1.26
Motorcycle	0	0	3	2	2	1.47
Fatal/Injury Crashes per MVM	0.36	0.36	0.50	0.30	0.39	0.41
Statewide Ave. F/I Crashes/MVM	0.50	0.50	0.50	0.50	0.50	0.50
Fatal Crashes per MVM	0	0	0	0.28	0.56	0.084
Statewide Average Fatal Crashes per MVM	0.013	0.013	0.013	0.013	0.013	0.013



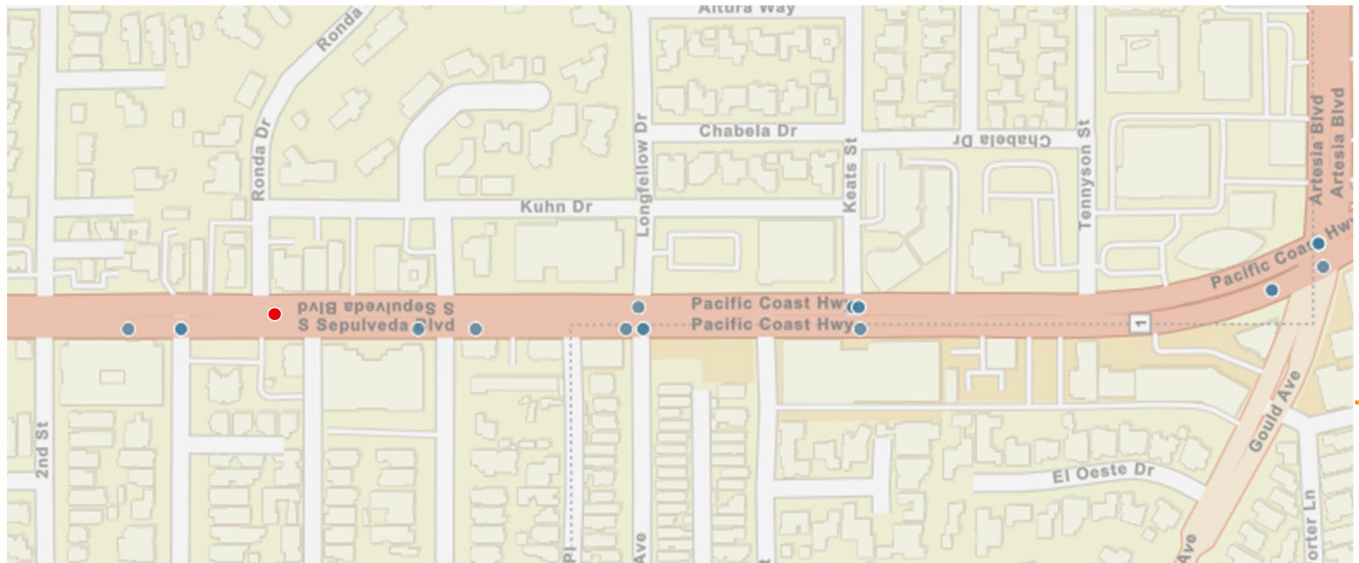


# Crash History Map 2021-9/2025



Legend

- Injury Crash
- Fatal Crash



# Policy Related Strategies

- **State Priority Safety Corridor**
  - Pilot Project
  - Malibu Go Safely PCH Campaign
- **AB 645 – Speed Camera Enforcement**
  - Legislation as a Designated Jurisdiction
- **E-Bike Safety Advisory Group**
- **Social media and online education**



# Enforcement and Education Strategies

- **Enforcement Safety Measures**

- Conduct targeted speed enforcement (**Ongoing**)
- Conduct DUI and vehicle safety checkpoints (**Ongoing**)

- **Education Safety Measures**

- Deploy changeable message boards w/ safety info. (**Ongoing**)
- Conduct social media / online education campaign
- Conduct Operation Prom Night school events



# Engineering Safety Measures

- Access Management (to reduce points of conflict between vehicles)
  - Construct median barriers to prohibit high-conflict turning movements (TBD)
- Advanced Technology and ITS (for driver education and crash prevention)
  - Install speed feedback signs (In process)
  - Install traffic monitoring sensors (In process)
- Bicyclists (to improve safety for vulnerable road users)
  - Install bicycle lanes, sharrows and bike detection on specific cross-streets (TBD)



# Engineering Safety Measures

- Delineation (to channelize and separate traffic flow)
  - Install Keep Clear, speed and yield pavement markings **(Under construction)**
  - Add lane extension lines through intersection **(Under construction)**
  - Restripe with high-reflectivity striping after resurfacing **(Under construction)**
- Intersection Geometry (for positive guidance through intersections)
  - Add dual left turn lanes at Manhattan Beach Blvd. **(In Design)**
  - Construct channelizing islands to prohibit illegal turns **(TBD)**



# Engineering Safety Measures

- Intersection Traffic Control (to improve pedestrian safety and reduce points of conflict)
  - Install leading pedestrian signal timing at all traffic signals **(Completed)**
  - Add vehicle detection at signalized intersections **(Under Construction)**
  - Prohibit left turns at some unsignalized intersections **(TBD)**
  - Install right turn only restrictions on some high-conflict side streets **(TBD)**
  - Retime signals to “rest in red” at night **(Under Const.)**



# Engineering Safety Measures

- Pedestrians (to improve pedestrian safety, give positive guidance and driver awareness)
  - Install high-visibility crosswalks (Under construction)
  - Construct sidewalks, remove barriers (In design)
  - Construct directional access ramps (Under construction)
  - Construct ADA compliant ramps (Under construction)
  - Install pedestrian crossing prohibition signs (Under const.)
  - Install midblock roadway lighting
- Pavement Condition and Friction (to improve braking performance and driver visibility)
  - Resurface roadway for all-weather, high contrast striping (Under construction)



# Engineering Safety Measures

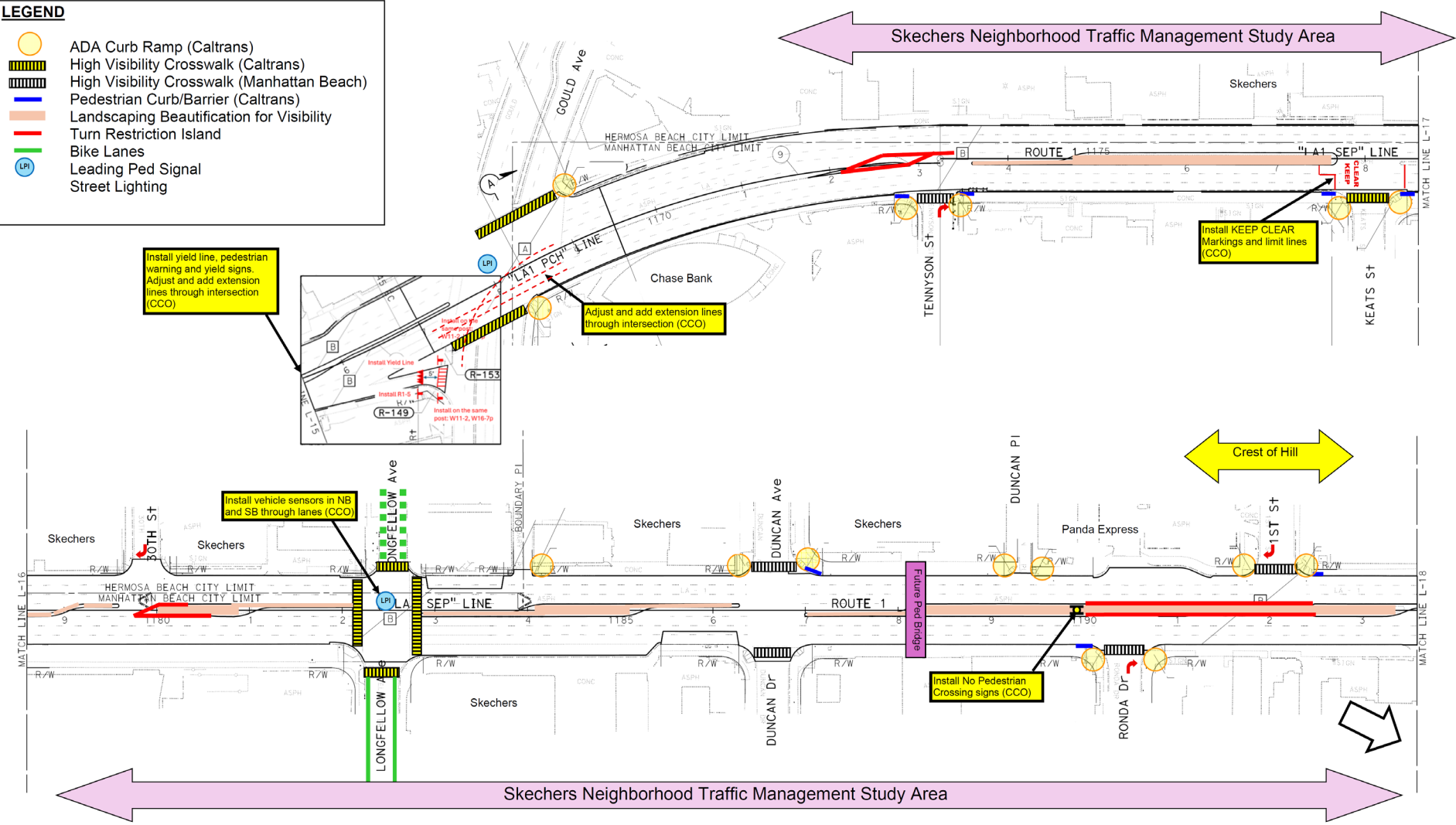
- Shoulder Treatments (for positive lane control)
  - Reduce shoulder width restriping (**Under construction**)
- Signs (to educate drivers and reduce unsafe pedestrian activity)
  - Install pedestrian crossing prohibition signs (**Under construction**)
  - Install speed limit signs (**Under construction**)
- Speed Management
  - Install speed feedback signs (**In process**)



# Potential Safety Measures Concept Plan

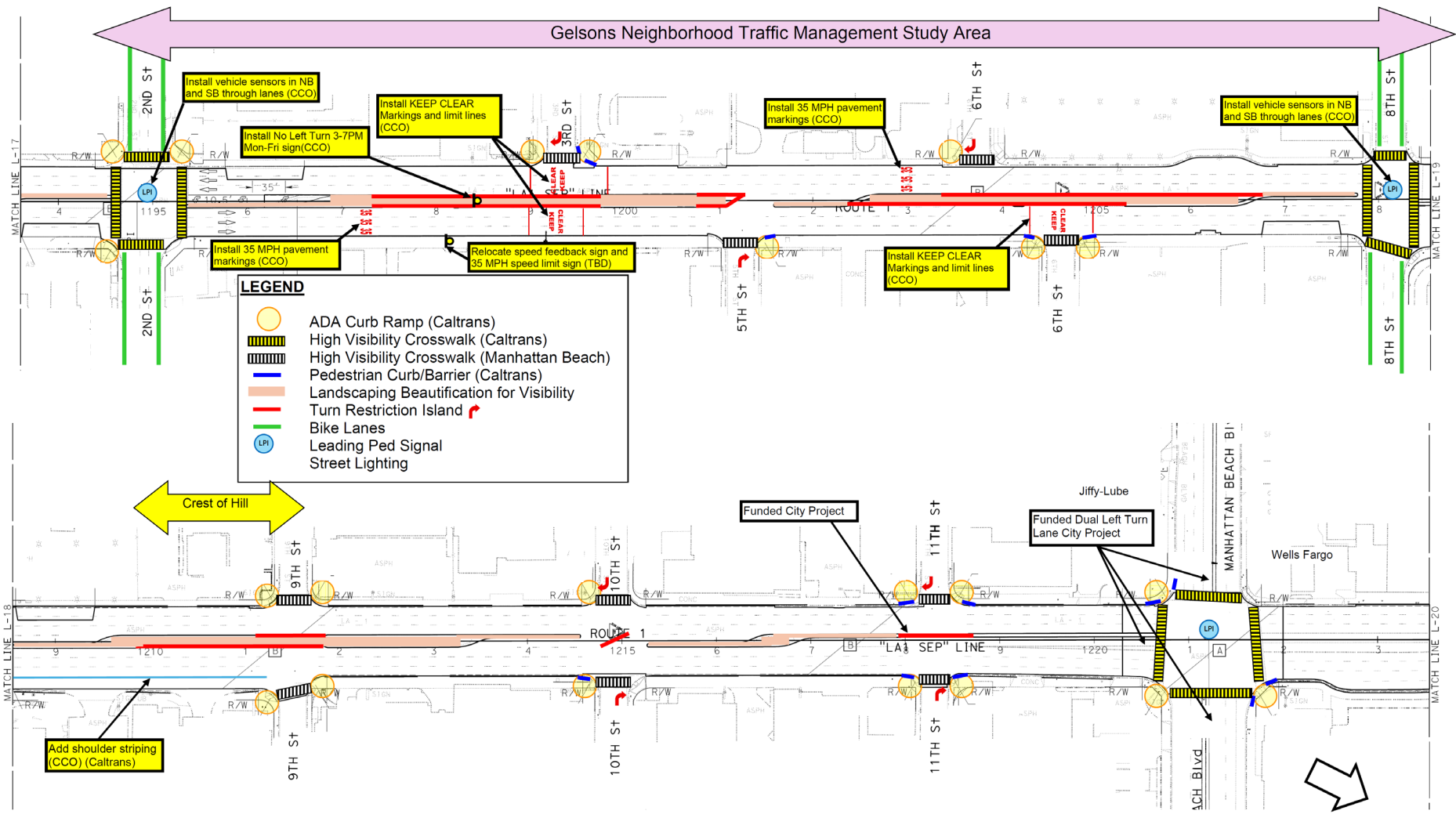
**LEGEND**

-  ADA Curb Ramp (Caltrans)
-  High Visibility Crosswalk (Caltrans)
-  High Visibility Crosswalk (Manhattan Beach)
-  Pedestrian Curb/Barrier (Caltrans)
-  Landscaping Beautification for Visibility
-  Turn Restriction Island
-  Bike Lanes
-  Leading Ped Signal
-  Street Lighting



# Potential Safety Measures Concept Plan

## Gelsons Neighborhood Traffic Management Study Area



### LEGEND

- ADA Curb Ramp (Caltrans)
- High Visibility Crosswalk (Caltrans)
- High Visibility Crosswalk (Manhattan Beach)
- Pedestrian Curb/Barrier (Caltrans)
- Landscaping Beautification for Visibility
- Turn Restriction Island
- Bike Lanes
- Leading Ped Signal
- Street Lighting

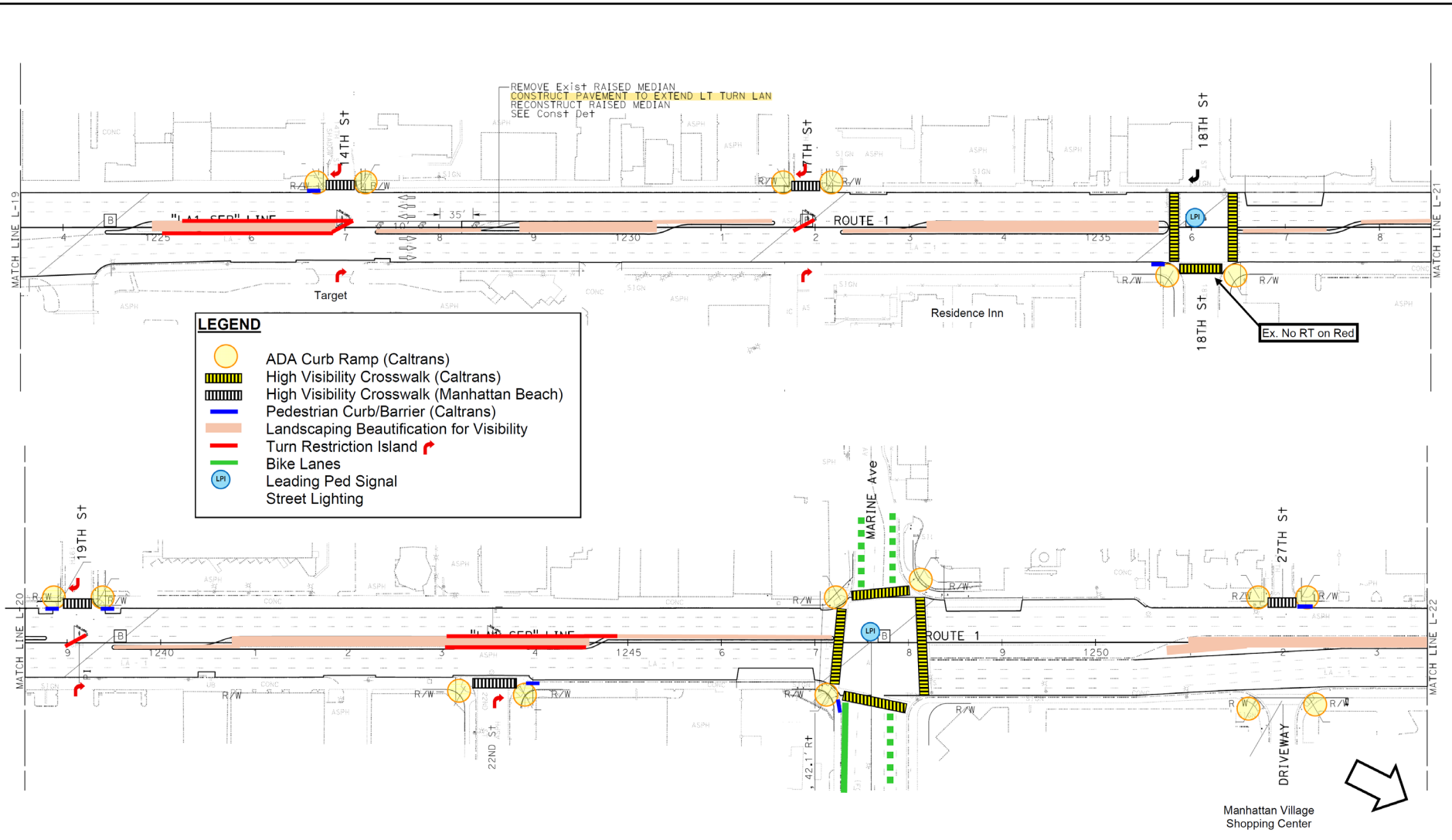


City of Manhattan Beach  
Community Development  
Traffic Engineering Division

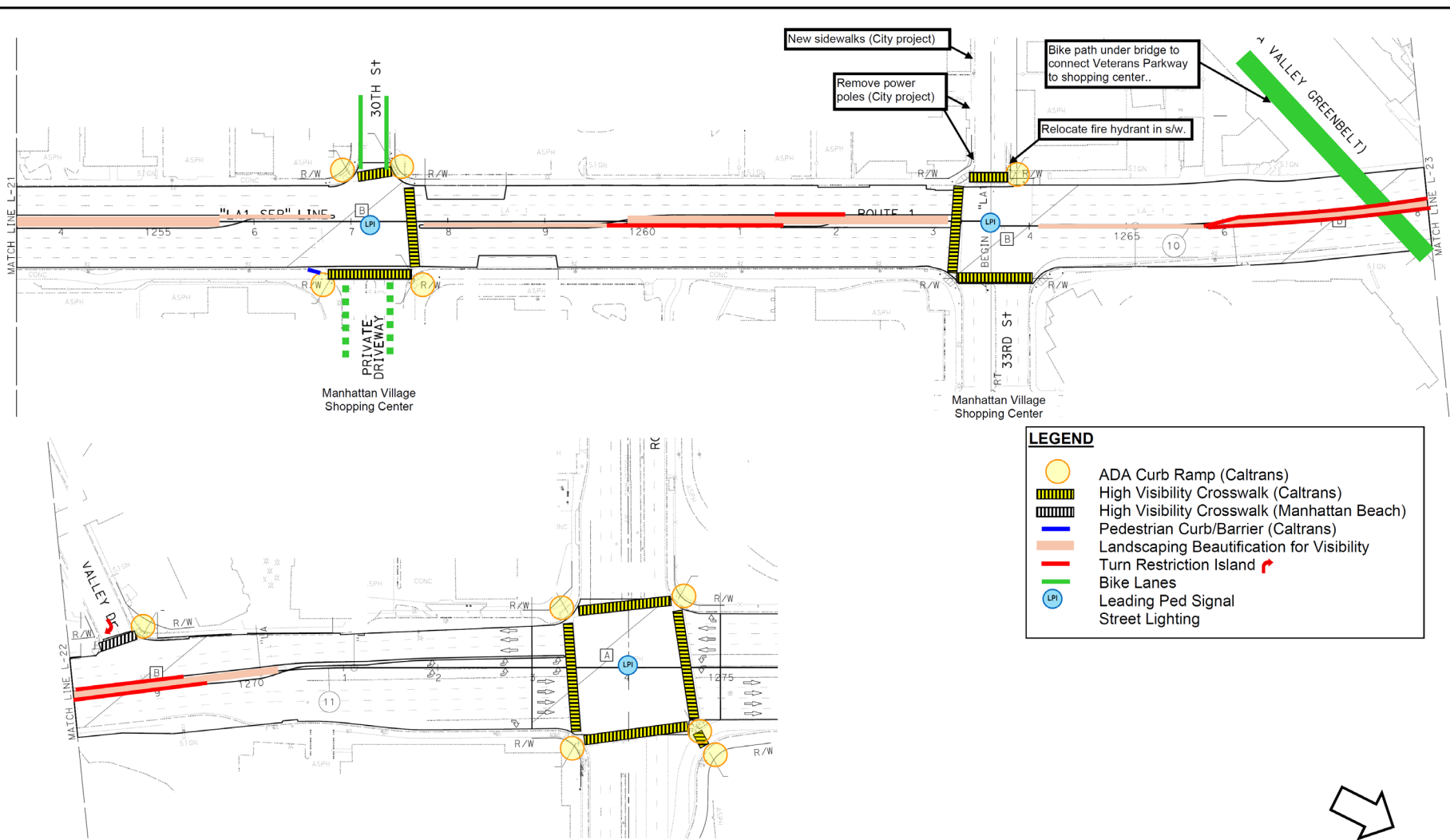
FOR PLANNING PURPOSES ONLY  
Revised 03/16/2026

Sepulveda Boulevard (SR-1)  
Safety Study Potential Measures  
Sheet 2 of 4

# Potential Safety Measures Concept Plan



# Potential Safety Measures Concept Plan



# Potential Safety Measures

#	POLICY SAFETY MEASURES	LEAD AGENCY	SCHEDULE	COST	NOTES
1	Pursue State Priority Corridor status	City	Medium	\$	In progress
2	Pursue speed camera enforcement pilot project per AB-645	City	Medium	\$	In progress
3	Form an E-Bike Community Advisory Group and Action Plan	City	Short	\$	
#	ENFORCEMENT SAFETY MEASURES	LEAD AGENCY	SCHEDULE	COST	NOTES
4	Conduct DUI checkpoints (also Education Safety Measure)	City	Short	\$	July 2025, More planned
5	Deploy video surveillance cameras with targeted enforcement	City	Short	\$	In progress
#	EDUCATION SAFETY MEASURES	LEAD AGENCY	SCHEDULE	COST	NOTES
6	Deploy changeable message boards with educational info.	City	Short	\$	In progress
7	Conduct social media and online educational campaign	City	Medium	\$	Consider logo and identity
8	Conduct "Operation Prom Night" impaired driving H.S. assembly	City	Short	\$	Added by PPIC 3/26/2026
#	ENGINEERING SAFETY MEASURES	LEAD AGENCY	SCHEDULE	COST	NOTES
9	Construct ADA accessible curb ramps (various locations)	Caltrans	Short	\$\$\$	CAPM project
10	Install high visibility crosswalks (various locations)	Caltrans	Short	\$\$	CAPM project
11	Install high visibility crosswalks (various locations)	City	Short	\$\$	
12	Install pedestrian curb/barrier at corners (various locations)	Caltrans	Short	\$\$	Part of CAPM project
13	Install yield line, pedestrian warning and yield signs at Artesia Bl. Adjust and add extension lines in intersection.	Caltrans	Short	\$\$	CCO to CAPM project
14	Install vehicle sensor loops at three intersections (2 <sup>nd</sup> Street, 8 <sup>th</sup> Street, and Longfellow Ave)	Caltrans	Short	\$\$	CCO to CAPM project
15	Install leading pedestrian interval at intersections	Caltrans	Short	\$	Completed. This is standard operation for Caltrans.
16	Prohibit WB left turns at Tennyson St.*	City	Medium	\$	Skechers NTMP
17	Install limit line, KEEP CLEAR pavement markings NB and high visibility crosswalk at Keats St.	Caltrans	Short	\$	CCO to CAPM project
18	Prohibit EB left turns at 30th St (Hermosa Beach)	Hermosa Beach	Short	\$	In Hermosa Beach
19	Install bike lanes and sharrows on Longfellow Ave.	City	Medium	\$	Skechers NTMP (Remove parking)
20	Install No Ped Xing signs at Ronda Dr. in the center median.	Caltrans	Short	\$	CCO to CAPM project



#	ENGINEERING SAFETY MEASURES	LEAD AGENCY	SCHEDULE	COST	NOTES
21	Prohibit WB left turns at Ronda St. *	City	Medium	\$	Skechers NTMP
22	Install bike lanes and sharrows on 2 <sup>nd</sup> Street	City	Short	\$	Gelsons NTMP (Remove parking)
23	Install 35 MPH pavement markings NB and SB between 2 <sup>nd</sup> St. and 6 <sup>th</sup> St.	Caltrans	Short	\$	CCO to CAPM project
24	Install 35 MPH speed limit sign on NB and add additional sign prohibiting NB left turns 3-7PM M-F at 3 <sup>rd</sup> St.	Caltrans	Short	\$	CCO to CAPM project
25	Relocate/add speed feedback sign from 8 <sup>th</sup> St. to 3 <sup>rd</sup> St.	City	Short	\$	2 new feedback signs purchased.
26	Install limit line and KEEP CLEAR pavement markings for NB lanes.	Caltrans	Short	\$	CCO to CAPM
26b	Prohibit EB left turns at 3 <sup>rd</sup> St.*	City	Short	\$	Gelsons NTMP
27	Prohibit WB left turns at 5 <sup>th</sup> St.*	City	Medium	\$	Gelsons NTMP
28	Prohibit EB left turns at 6 <sup>th</sup> St.*	City	Medium	\$	Gelsons NTMP
29	Install limit line and KEEP CLEAR pavement markings for NB lanes at 6 <sup>th</sup> St.*	Caltrans	Short	\$	CCO to CAPM
29b	Prohibit WB left turns at 6 <sup>th</sup> St.*	City	Short	\$	Gelsons NTMP
30	Install NB shoulder diagonal markings between 8 <sup>th</sup> St. to 9 <sup>th</sup> St.	Caltrans	Short	\$	CCO to CAPM project
31	Install bike lanes and sharrows on 8 <sup>th</sup> St.	City	Medium	\$\$	Gelsons NTMP (Widen street)
32	Prohibit WB and EB left turns at 10 <sup>th</sup> St.*	City	Medium	\$	Gelsons NTMP
33	Prohibit EB and WB left turns at 11 <sup>th</sup> St.*	City	Medium	\$\$	Existing City Project at MBB
34	Construct dual NB, EB and WB left turn pockets at MBB	City	Medium	\$\$\$\$	Existing City Project at MBB
35	Prohibit EB and WB left turns at 14 <sup>th</sup> St.*	City	Medium	\$	
36	Prohibit EB and WB left turns at 17 <sup>th</sup> St.*	City	Medium	\$	
37	Prohibit EB and WB left turns at 19 <sup>th</sup> St.*	City	Medium	\$	
38	Prohibit WB left turns at 22 <sup>nd</sup> St.*	City	Medium	\$	
39	Install bike lanes and sharrows on Marine Ave.	City	Long	\$\$\$	Widen Street
40	Install bike lanes and sharrows on 30 <sup>th</sup> St.	City	Long	\$\$\$	MV shopping center driveway
41	Install sidewalks on 33 <sup>rd</sup> Street	City	Medium	\$\$\$	Existing City Project
42	Relocate poles and fire hydrant in sidewalk on 33 <sup>rd</sup> Street	City	Long	\$\$\$	
43	Construct bike path west of Veterans Parkway bridge	City	Long	\$\$\$	
44	Prohibit EB left turns at Valley Dr.*	City	Short	\$	
45	Reconfigure crosswalks at Rosecrans Ave with dual curb ramp	City	Medium	\$\$\$	New curb ramps, signal modification
46	Center median landscaping beautification on entire corridor	City	Medium	\$\$\$\$	Drought tolerant, remove obstructions
47	Construct pedestrian bridge between Duncan Dr and Ronda	Skechers	Long	\$\$\$\$	Proposed by Skechers
48	Install mid-block roadway lighting along Sepulveda Boulevard	City	Long	\$\$\$\$	Added 3/26/2026
49	Retime select traffic signals to "rest in red" at night	Caltrans	Short	\$	Added by PPIC 3/26/2026

# Public Notification, Outreach, and Comment

- The public has been informed of this agenda item as part of the City's standard meeting notice practices via public bulletin boards, website calendar, and social media postings.
- All persons who contacted the City about safety along Sepulveda Boulevard were sent an email with staff report and invitation to attend.



# Next Steps

- Discuss potential safety measures pros and cons
- Hear public comments
- Approve study and list of potential safety measures
- Provide direction to staff for specific measures
- Implement safety measures that are in process
- Initiate new safety projects and programs



